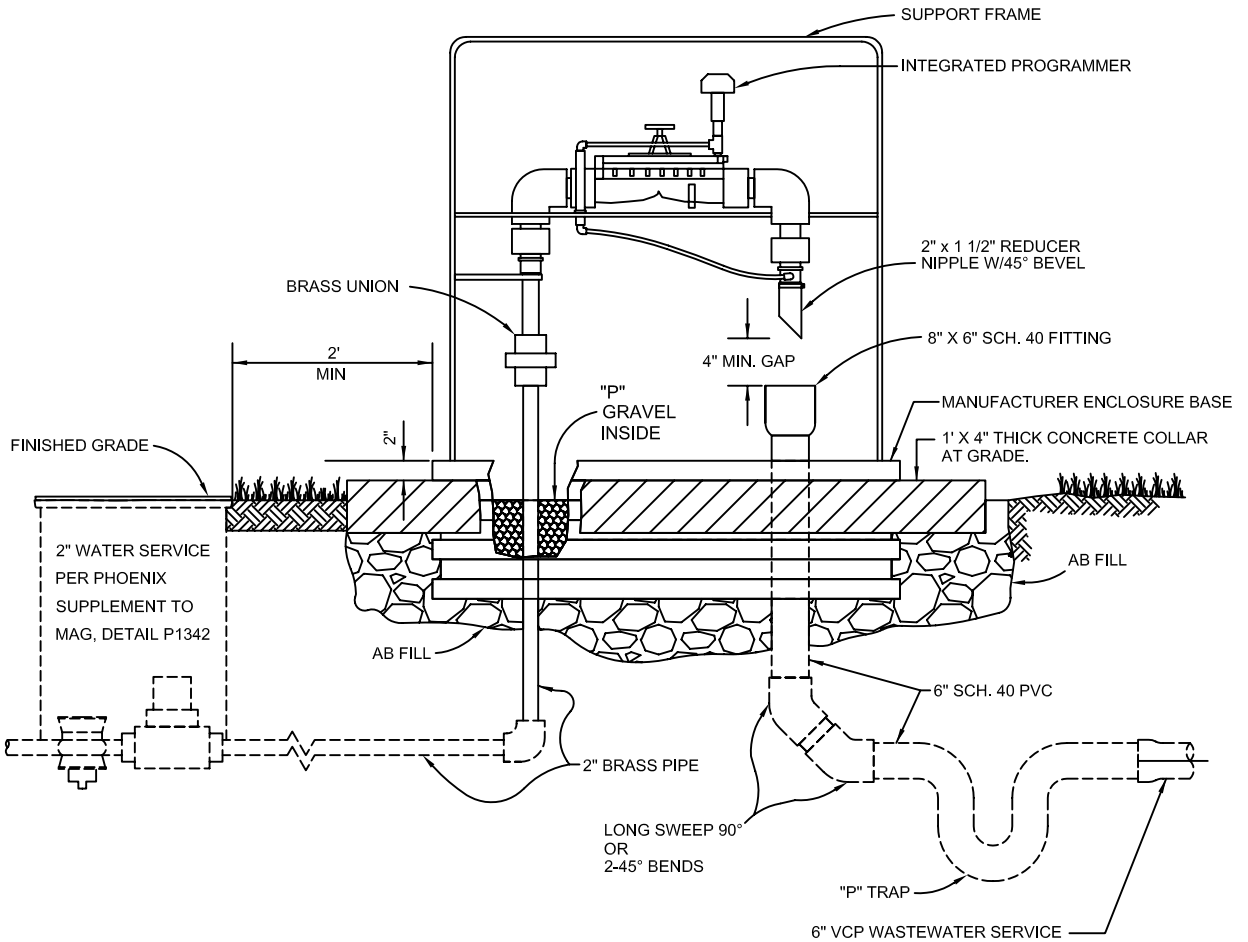


COP/WSD DETAIL 2-INCH AUTO FLUSHING ASSEMBLY

DCE-D02



NOTES

1. THE AUTO FLUSHING (A-F) ASSEMBLY SHALL BE A "HYDRO-GUARD VERTICAL UNIT", MODEL # PHX HG5 AIR ALL BRASS, WHICH INCLUDES ALL OF THE FOLLOWING; MANUFACTURER BASE, INTERNAL SUPPORT FRAME, MANUFACTURER ENCLOSURE COVER, FLUSHING VALVE UNIT, INTERGRATED PROGRAMMER AS WELL AS ALL BRASS PIPING SHOWN TO BE INSIDE THE BASE AND ENCLOSURE UNIT. THE INSTALLER SHALL PROVIDE THE BALANCE OF MATERIALS AND LABOR FOR A FULLY FUNCTIONING UNIT WHICH INCLUDES BUT IS NOT LIMITED TO THE FOLLOWING; WATER SERVICE, WASTEWATER SERVICE, ALL CONNECTING PIPING, BACKFILL AND COMPACTION, AS WELL AS A CONCRETE RING, ETC.
2. THE WATER SUPPLY SHALL BE 2-INCH BRASS PIPE, WITH A BRASS UNION.
3. THE A-F VALVE SHALL BE ABLE TO OPERATE AUTOMATICALLY AT CHOSEN INTERVALS, USING A BATTERY OPERATED CONTROLLER, AND INCLUDE AN ALTERNATE MANUAL FLUSHING CAPABILITY.
4. THE DISCHARGE PIPE, SHALL HAVE A BEVELED DIFFUSER, AND WASTE TO A SCH. 40 PVC SEWER CONNECTION, INCLUDING PIPE P-TRAP.
5. THE MATCHING MANUFACTURER ENCLOSURE SHALL BE A LOCAL COMPATIBLE COLOR.