



Study program
alley

Need bike lanes to carry through past central west on Roosevelt

Cross Next to wall, stairs

Worst place to bike in ALL of downtown

Need better signaling at 1st Ave Roosevelt

Protected Bike lane 4th St x Roosevelt + McKinley 3rd St / Roosevelt

Need more Marked Crosswalks, protected bike lanes in Roosevelt Arts + Bio Med

Impacts with new spaces added to traffic - ASU P&C

Add signal or hawk

Eliminate traffic light on 1st Ave - Roos - Van Buren + Add protected bike

Ped traffic 2nd + Fillmore

Need way stop @ 2nd St + Fillmore Yes!

Need more time for ped phase (Taylor/Central)

Ped traffic is high East-West 3rd + Taylor

Phoenix Biomedical Campus

Grand Ave Bike lanes do not connect to downtown

Van Buren is a pedestrian HELL (so is 3rd Ave)

This cycle needs some work (3rd Ave Taylor)

Need way stop Taylor 1st-2nd St. Nextankson

Signal @ Taylor 3rd St.

ASU Mercado

Maybe continue the biking corridor here? (Monroe or Adams)

BUS-dedicated lanes? Maybe along LR tracks = bus ONLY?

Remove (3rd St Wash) right turn phase. Merge w/ thru phase and use flashing yellow arrow

Phoenix Convention Center

East Jefferson St Garage

Improve pavement on Adams St.

Keep the bike lane going off 7th St

Talking Stick Resort Arena

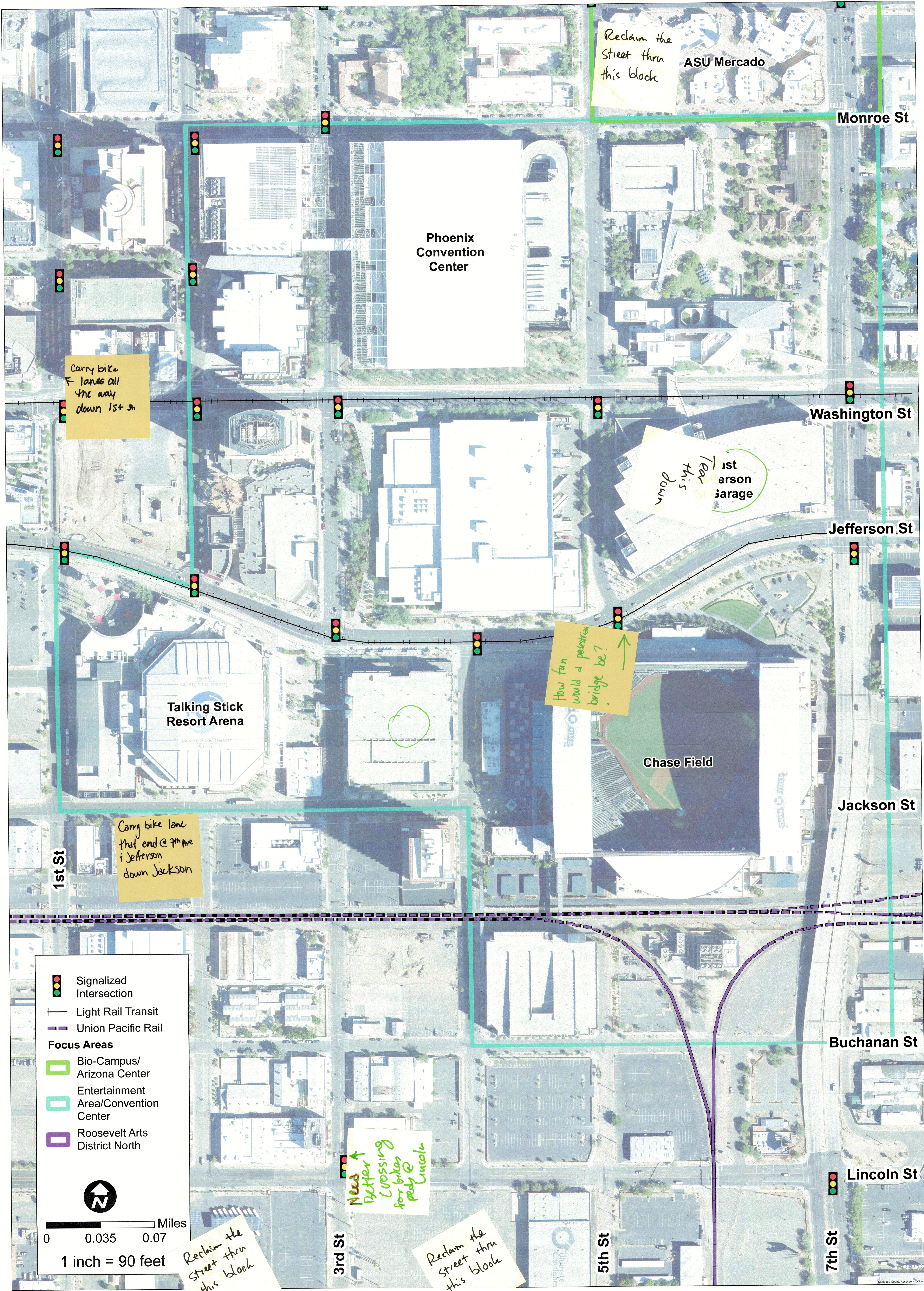
Chase Field

- Signalized Intersection
- Light Rail Transit
- Union Pacific Rail
- Interstate
- Major Arterial
- Minor Arterial
- Collector
- Local
- Focus Areas**
- Bio-Campus/Arizona Center
- Entertainment Area/Convention Center
- Roosevelt Arts District North



0 0.1 0.2 Miles

1 inch = 280 feet



Reclaim the Street thru this block
ASU Mercado
Monroe St

Phoenix Convention Center

Carry bike lanes all the way down 1st St

1st Jefferson St garage
Tear this down

How fun would a pedestrian bridge be?

Carry bike lane that end @ 7th Ave & Jefferson down Jackson

Talking Stick Resort Arena

Chase Field

1st St

3rd St

5th St

7th St

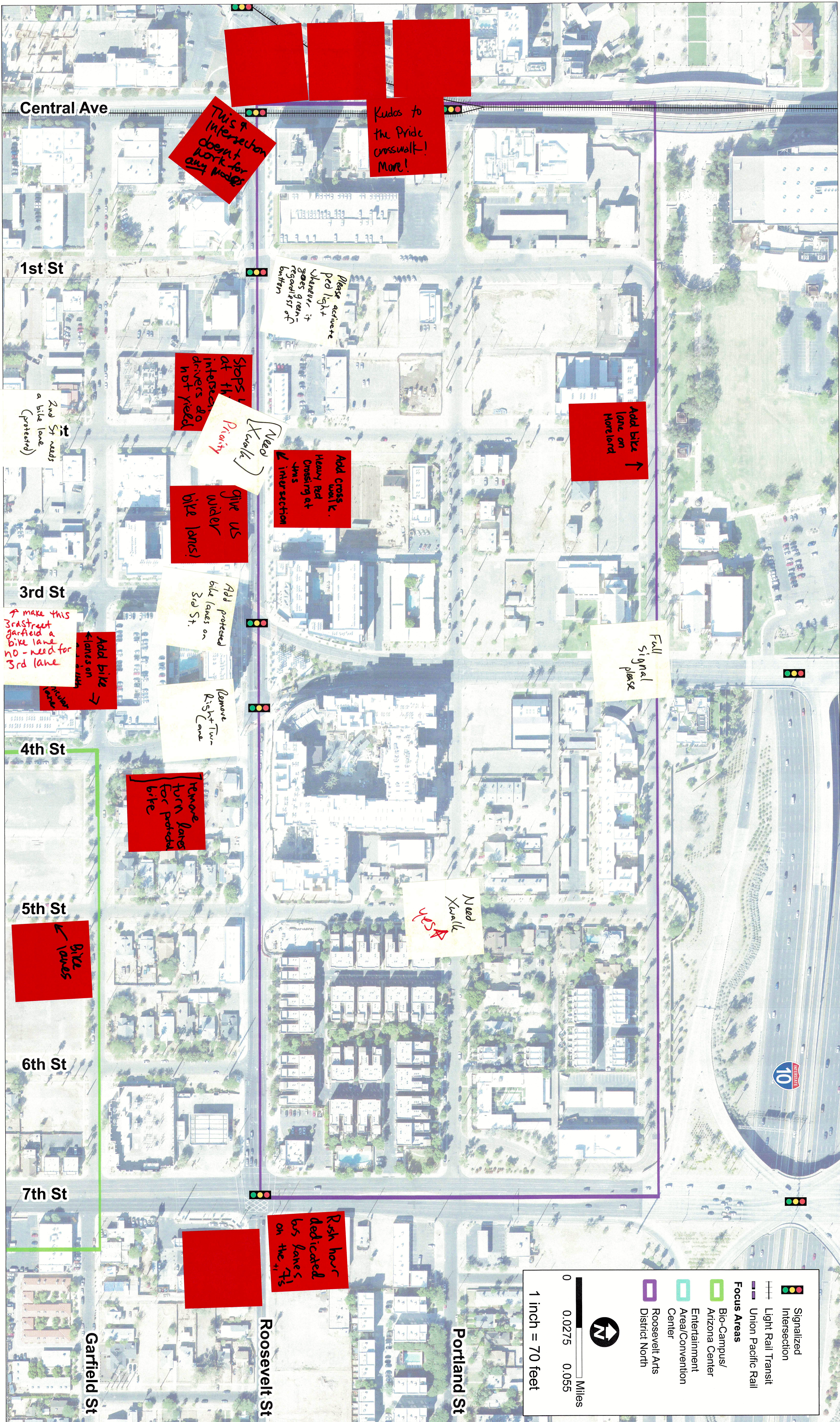
Signalized Intersection
 Light Rail Transit
 Union Pacific Rail
Focus Areas
 Bio-Campus/ Arizona Center
 Entertainment Area/Convention Center
 Roosevelt Arts District North

N
 0 0.035 0.07 Miles
 1 inch = 90 feet

Reclaim the Street thru this block

Need a better crossing for bikes past @ Lincoln

Reclaim the Street thru this block



This intersection doesn't work for any modes

Kudos to the Pride crosswalk! More!

Please activate Ped light whenever it goes green - regardless of button

Stops at the intersection drivers do not yield

Need [Xwalk] Priority

Add crosswalk. Heavy Ped Crossing at this intersection

Add bike lane on Moreland

give us wider bike lanes!

Add protected bike lanes on 3rd St.

Remove Right-Turn

Remove lanes turn for protected bike

Need Xwalk

3rd St

make this 3rd street garfield a bike lane no - need for 3rd lane

Add bike lanes on

4th St

5th St

6th St

7th St

Garfield St

Roosevelt St

Portland St

Rush hour dedicated bus lanes on the 4th

1 inch = 70 feet

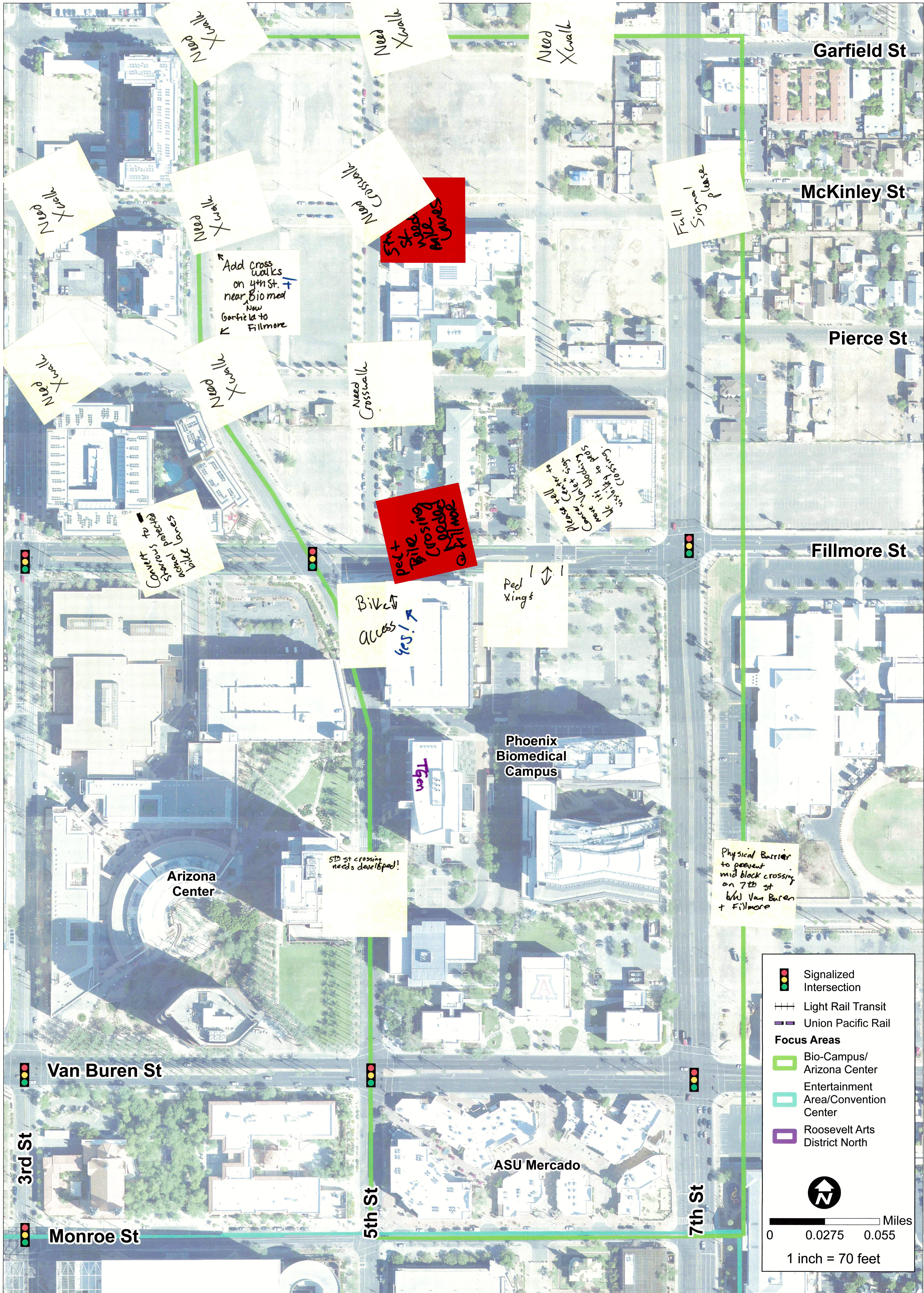
0 0.0275 0.055 Miles

North Arrow

- Signalized Intersection
- Light Rail Transit
- Union Pacific Rail

Focus Areas

- Bio-Campus/ Arizona Center
- Entertainment Areal/Convention Center
- Roosevelt Arts District North



Garfield St

McKinley St

Pierce St

Fillmore St

Van Buren St

Monroe St

3rd St

5th St

7th St

Phoenix Biomedical Campus

Arizona Center

ASU Mercado

Tgen

Need Xwalk

Need Xwalk

Need Xwalk

Need Xwalk

Need Xwalk

Need Crosswalk

Full Signal please

Add Cross walks on 4th St. near Bio med New Garfield to Fillmore

Convert Sparrows to bike lanes

Ped + Bike Crossing People

Please tell Cancer Center to have a locker for Crutches + Pees

Bike Access Yes!

Ped Xings

5th St crossing needs developed!

Physical Barrier to prevent mid block crossing on 7th St b/w Van Buren + Fillmore

Signalized Intersection
 Light Rail Transit
 Union Pacific Rail
Focus Areas
 Bio-Campus/Arizona Center
 Entertainment Area/Convention Center
 Roosevelt Arts District North

Miles
 0 0.0275 0.055
 1 inch = 70 feet