



City of Phoenix

**3rd Avenue, Catalina Dr to
Osborn Rd, Protected Bikeway**

Alternatives Assessment & Update

February 20, 2024

WELCOME AND BIENVENIDOS!

We're Excited You're Here!



Escuchar en Español

Marque 602-534-1000

luego el número de reunión,
57271

y luego apriete el #

INTERACTING THROUGH WEBEX

The screenshot displays a Webex meeting interface. The main content is a presentation slide with the following text: "Streets PHX STREET TRANSPORTATION DEPARTMENT", "Thank You for Watching", "Tips for Using Webex", and "Click Here to Open". The slide is titled "Viewing WebexTipScreen".

On the right side, a chat window is open, showing a message from Vivian P... to host (privately) at 4:02 PM: "Hello!!!!!!". Below the message is a text input field labeled "Enter chat message here". A "Q & A" section is also visible, with a "Select a question and then type your answer" prompt and a "There's a 512-character limit." note.

Yellow arrows point to the "Chat" button in the bottom right corner of the meeting interface, the "Enter chat message here" input field, and the "Q & A" section. Red circles highlight the "Chat" button in the top right corner of the chat window, the "Q & A" section header, and the "Chat" button in the bottom right corner of the meeting interface.

PRESENTATION PANEL MEMBERS

Joe Brown

Street Transportation Director

Eric Froberg

City Engineer

Rubben Lolly

*Deputy Director of Design
and Construction Management*

Leticia Vargas

Special Projects Administrator

Carl Langford

Traffic Engineering Supervisor

Sofia Mastikhina

Active Transportation Planner III

Consultants

Brandon Gonzalez, AICP, Alta Planning + Design

Chloe Ward, P.E., Alta Planning + Design

Matt Fralick, P.E., Alta Planning + Design



VIRTUAL PUBLIC MEETING AGENDA

- Project Background & Overview
- What are Protected Bicycle Facilities?
- Preliminary Design Alternatives for Transition
 - Discuss three preliminary concepts
 - Preliminary Opportunities & Challenges
- Next Steps
- Public Comment



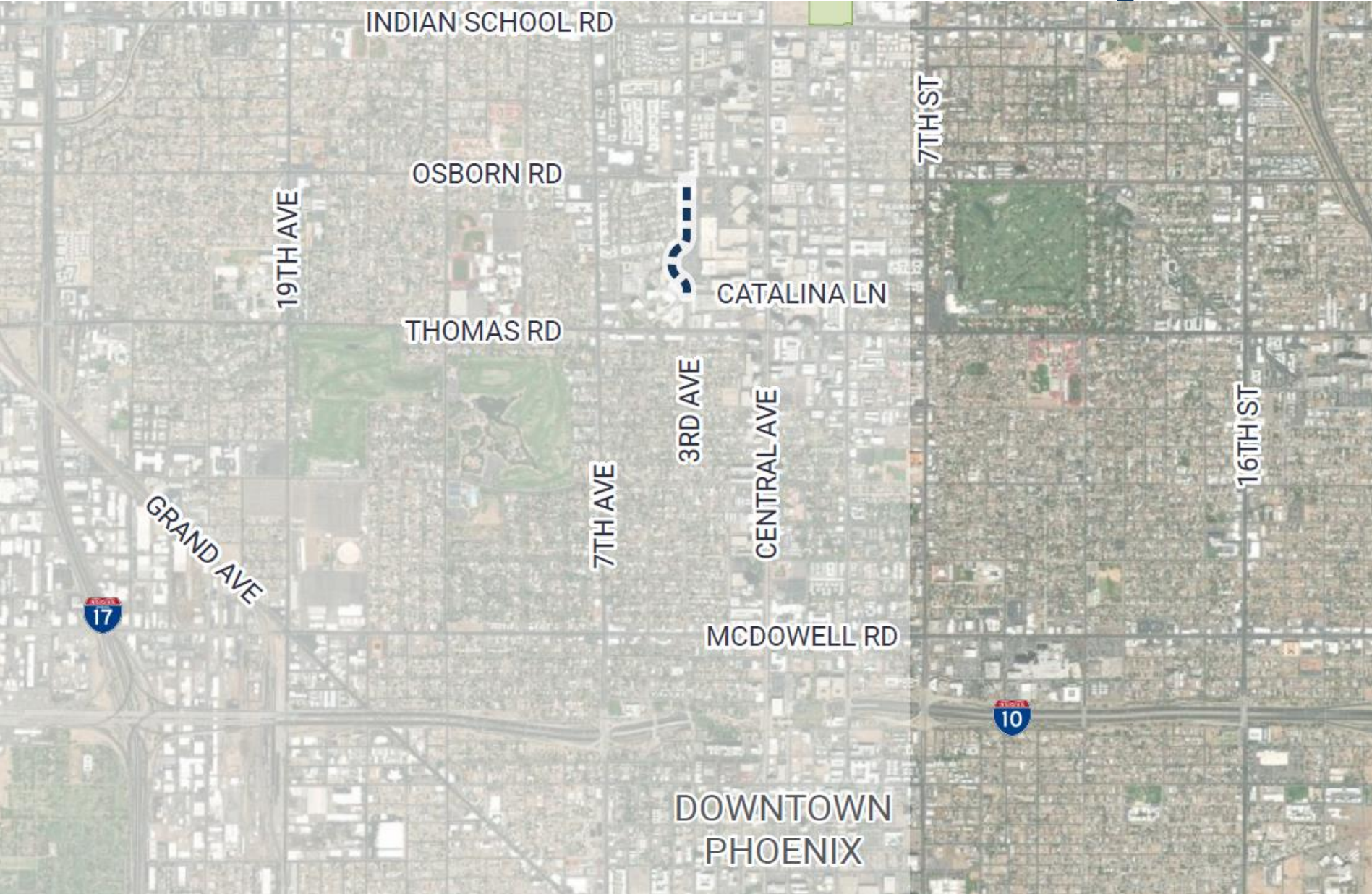
Street Transportation Director
Joe Brown





PROJECT BACKGROUND & CONTEXT

Where is the 3rd Avenue Project?

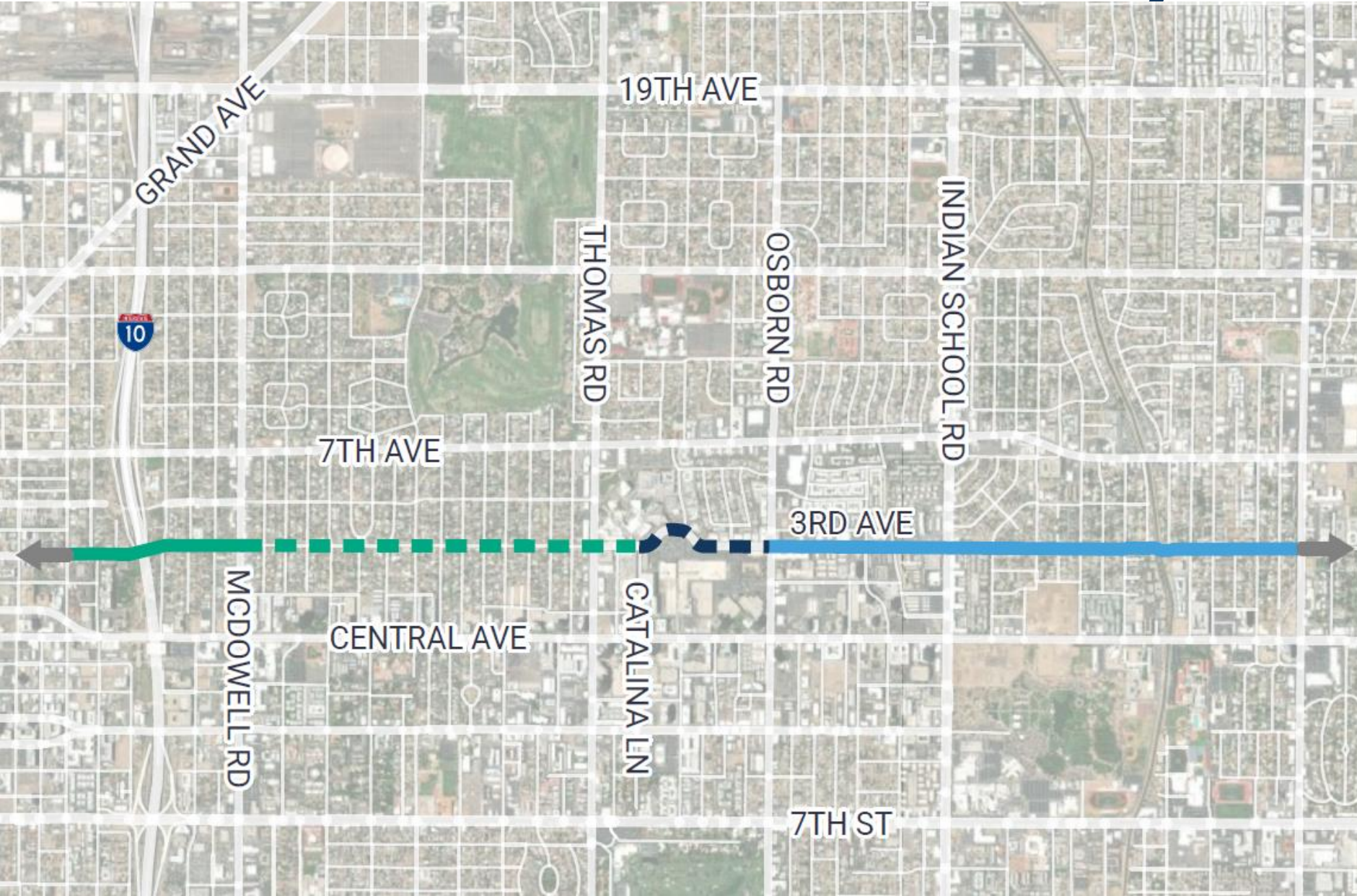


LEGEND

--- Project Corridor



What is the Sonoran Bikeway?



SONORAN BIKEWAY

LEGEND

PROPOSED BIKEWAY

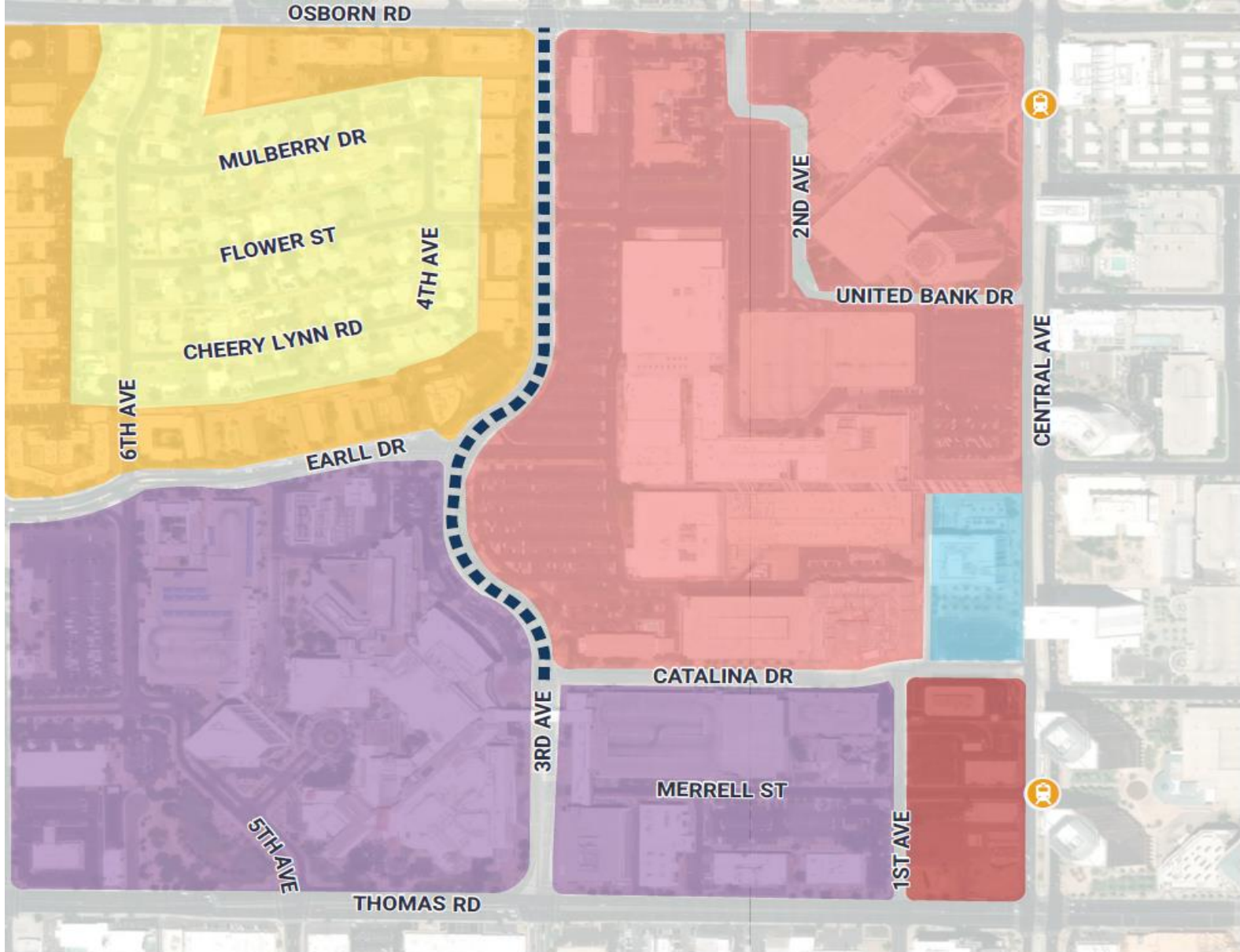
- Project Corridor
- Proposed 2-Way Protected Bikeway

EXISTING BIKEWAY

- Protected Bike Lane with Vertical Delineators
- 2-Way Protected Bikeway



Project Context



LEGEND

- ■ ■ Project Corridor
- 🚊 Light Rail Stations

LAND USES

- Single Family
- Multi-Family
- Creighton University
- Dignity Health / Medical
- Office / Commercial
- Park Central Development



WHAT ARE PROTECTED BIKE FACILITIES?

Protected Bike Lane with Vertical Delineator



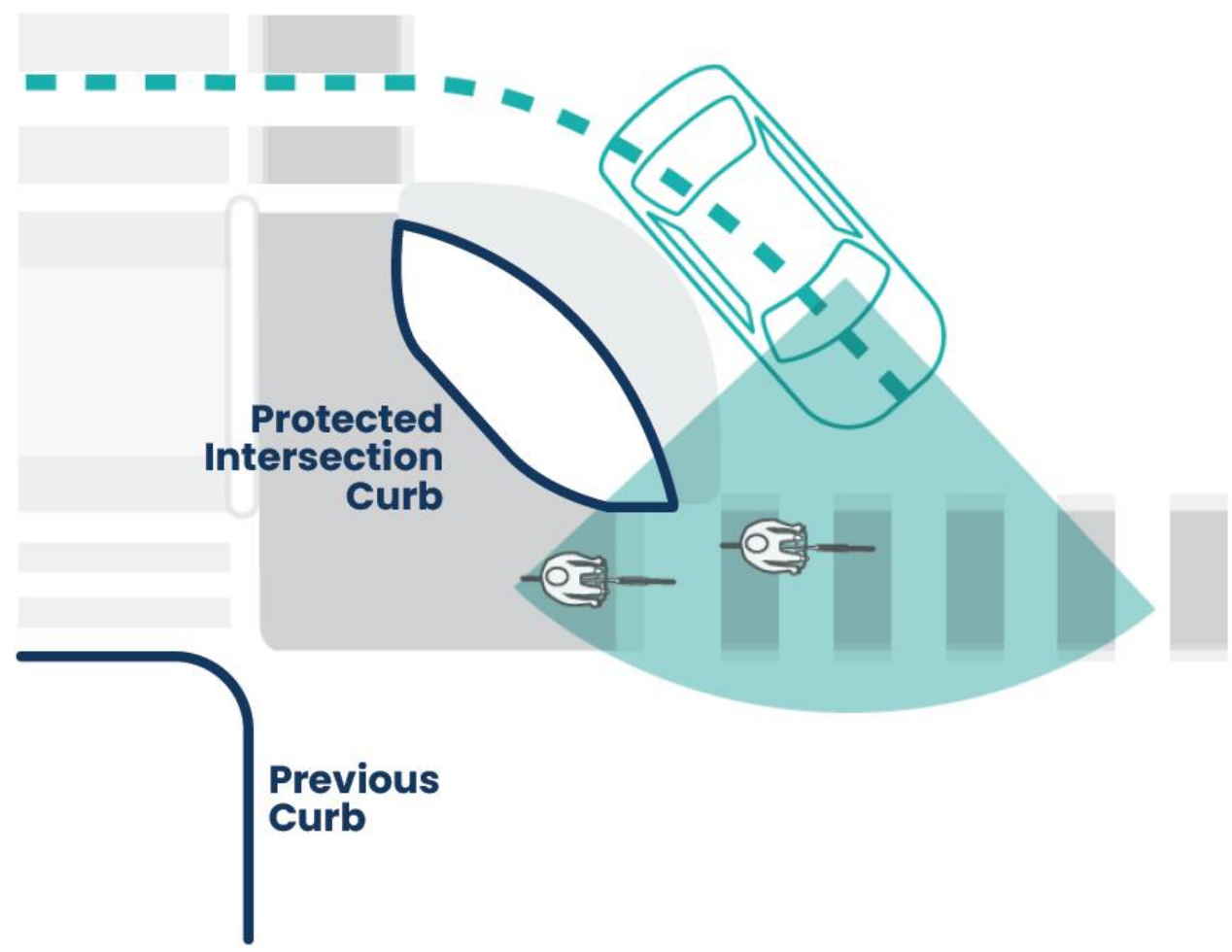
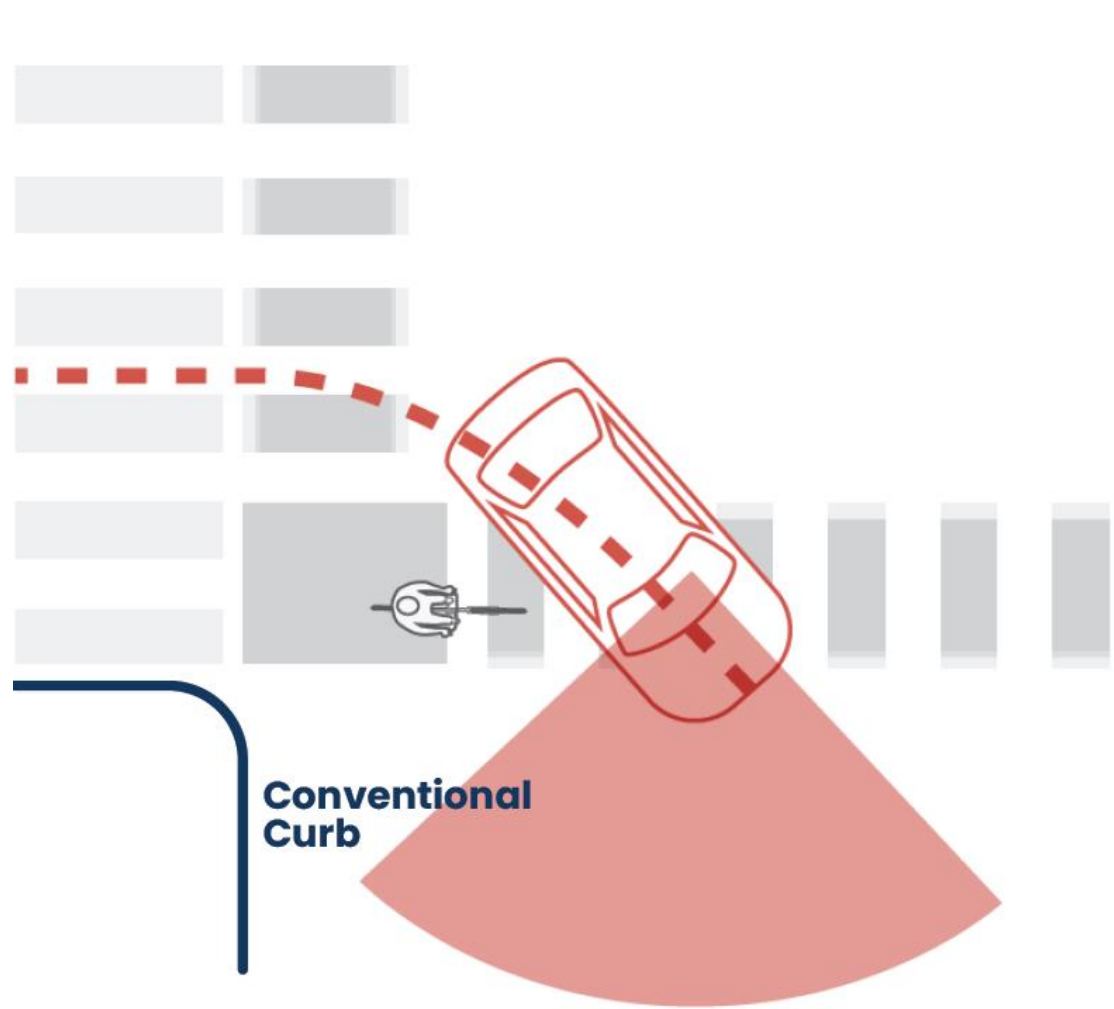
Protected Bike Lane with Curb




Protected Intersection



Protected Intersection



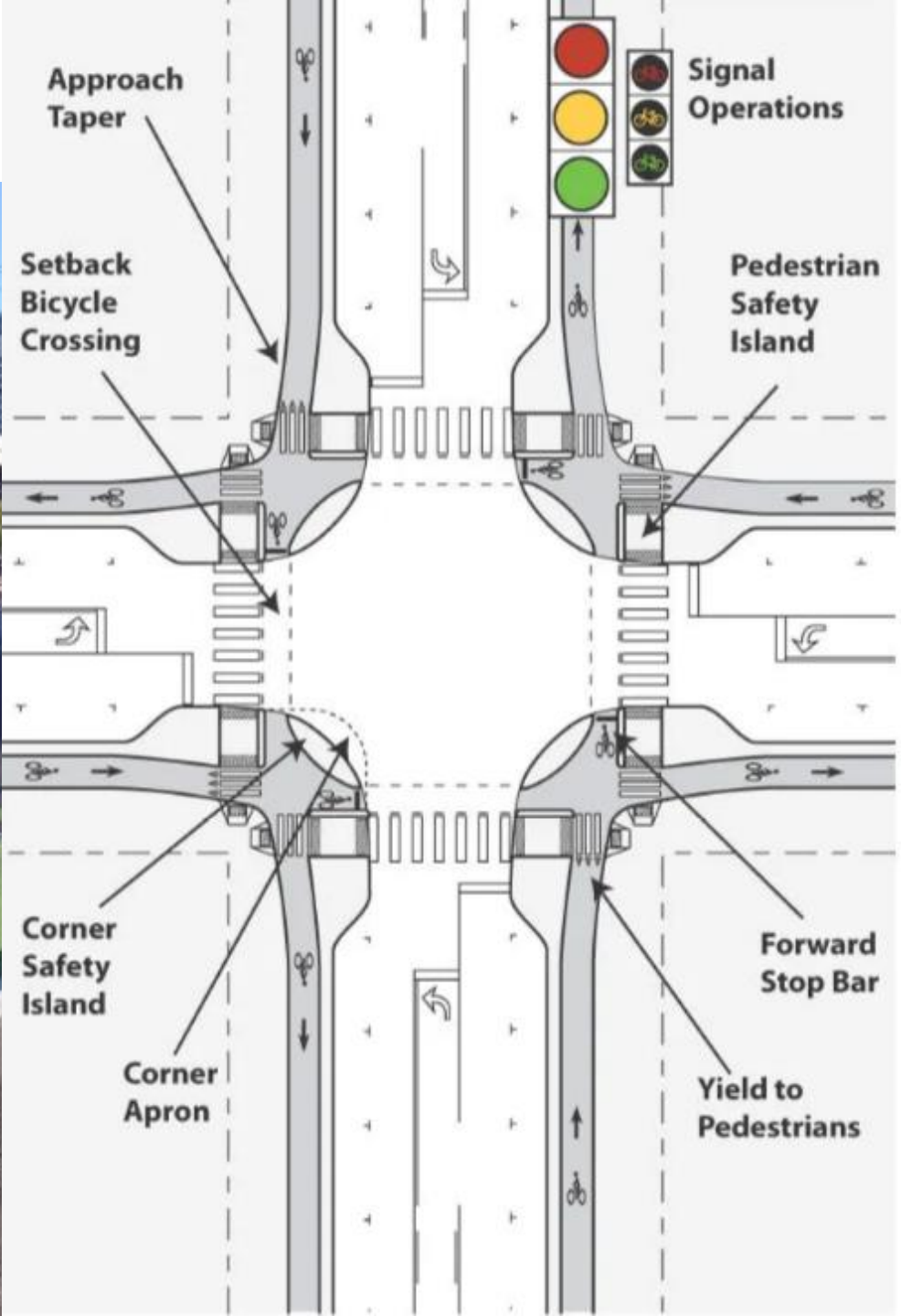


30TH STREET

COLORADO AVENUE

fully protected intersection at 30th Street and Colorado Avenue.

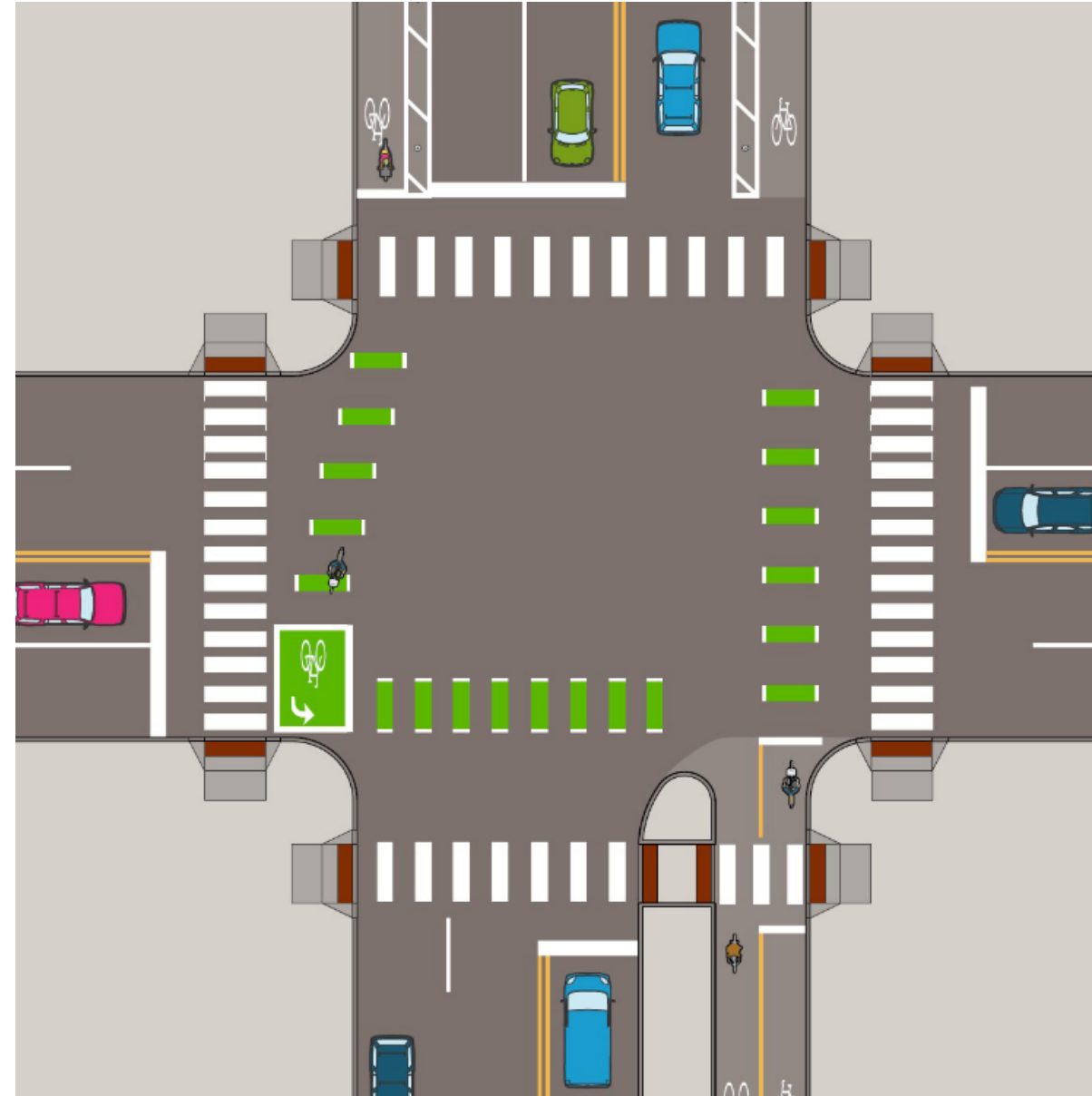
Protected Intersection



PRELIMINARY DESIGN ALTERNATIVES

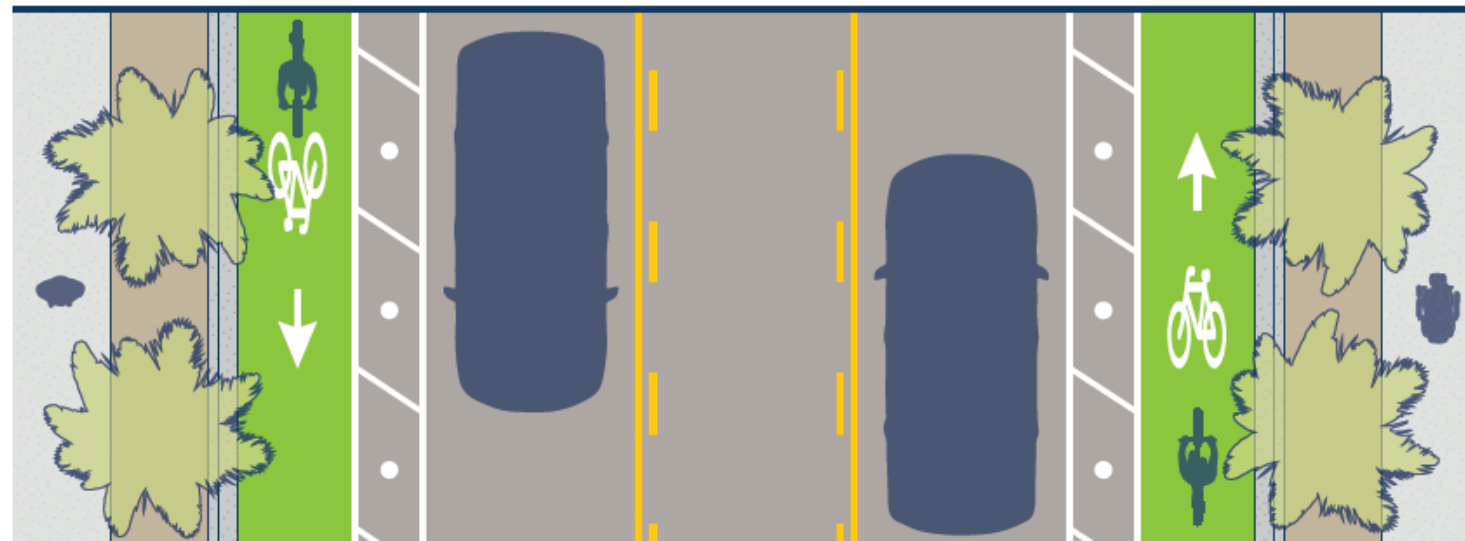
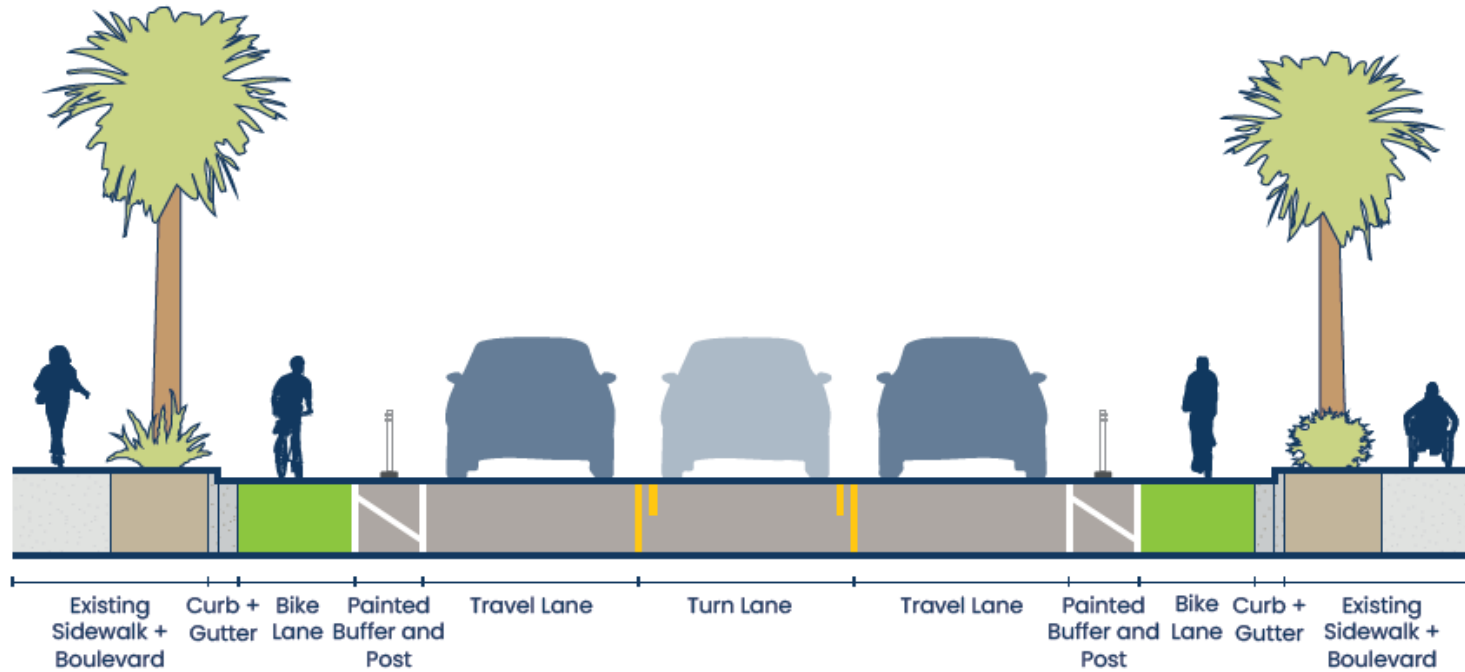
Design Objectives

- Enhance bicycle facility protection
- Make a safe “transition” between two bicycle facility types
- Maintain access and critical functions of hospital & medical uses
- Maintain and enhance access to businesses and neighborhoods
- Consider space for future pedestrian & artistic enhancements



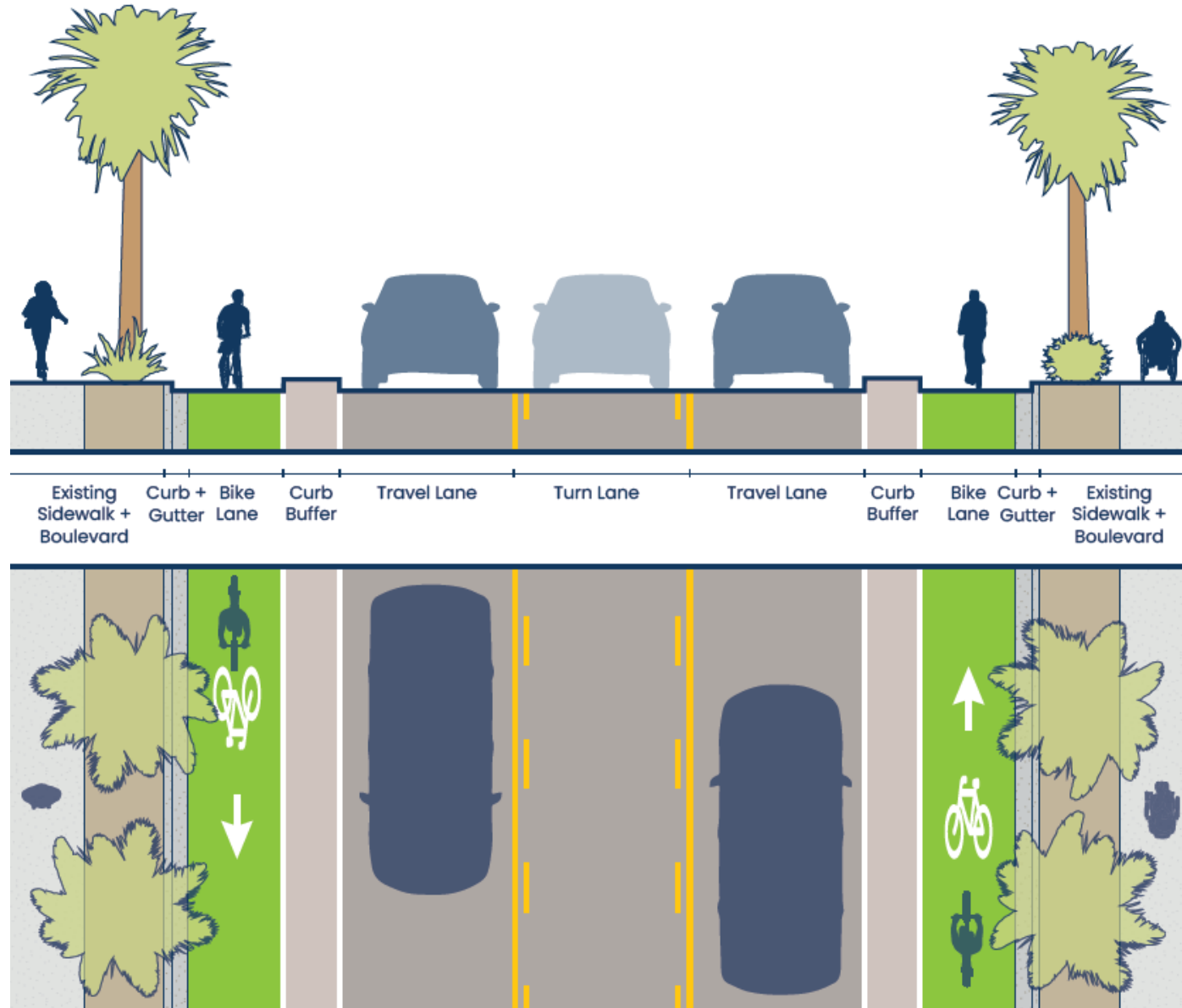
Cross-Section: Protected Bike Lane with Delineator

Existing Condition



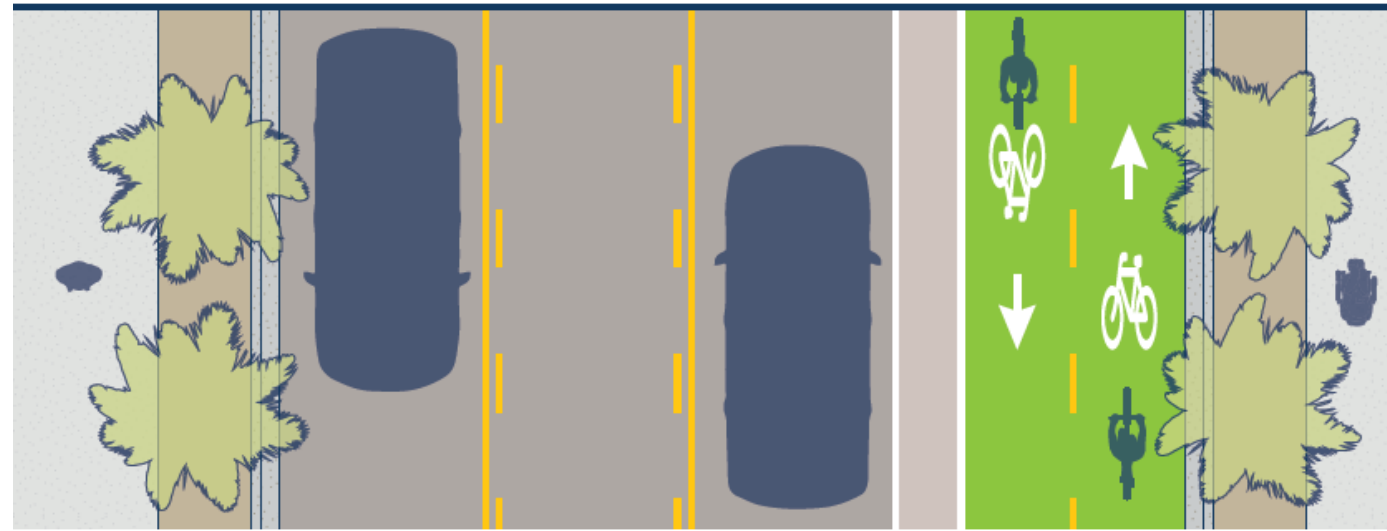
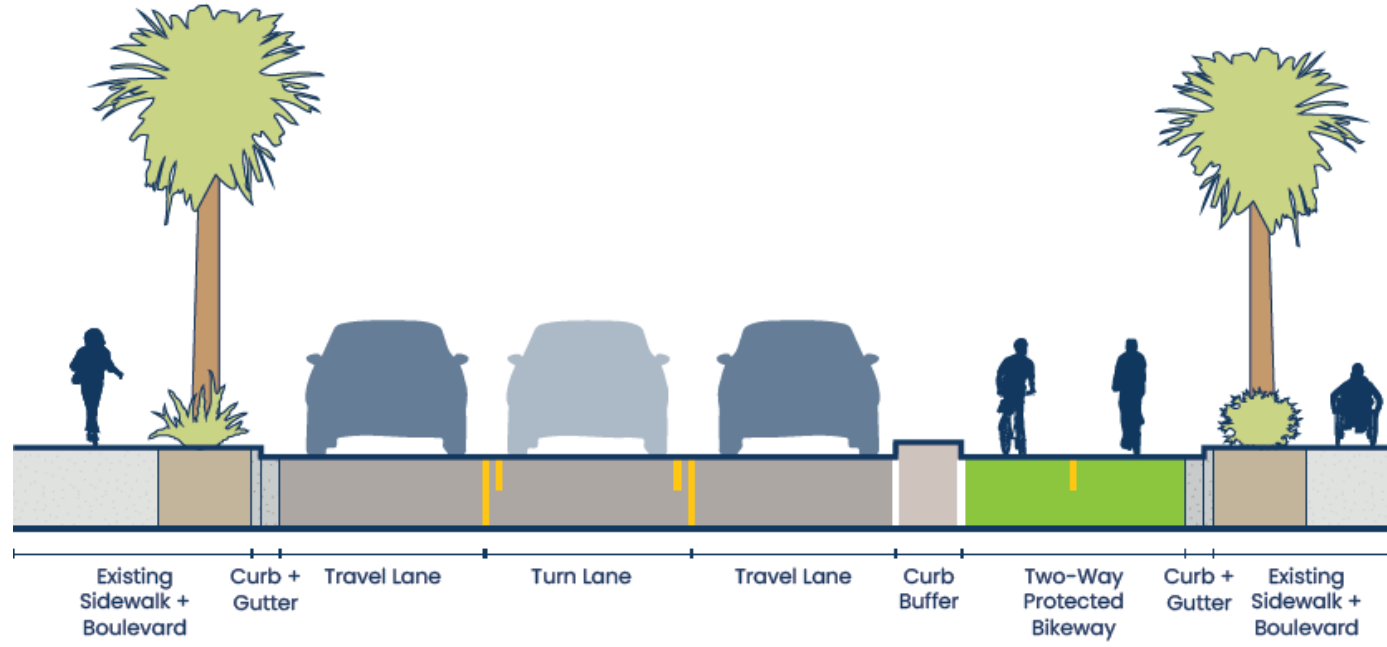
Cross-Section: Protected Bike Lane with Curb

Alternatives 1 & 2

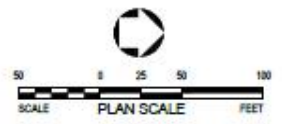
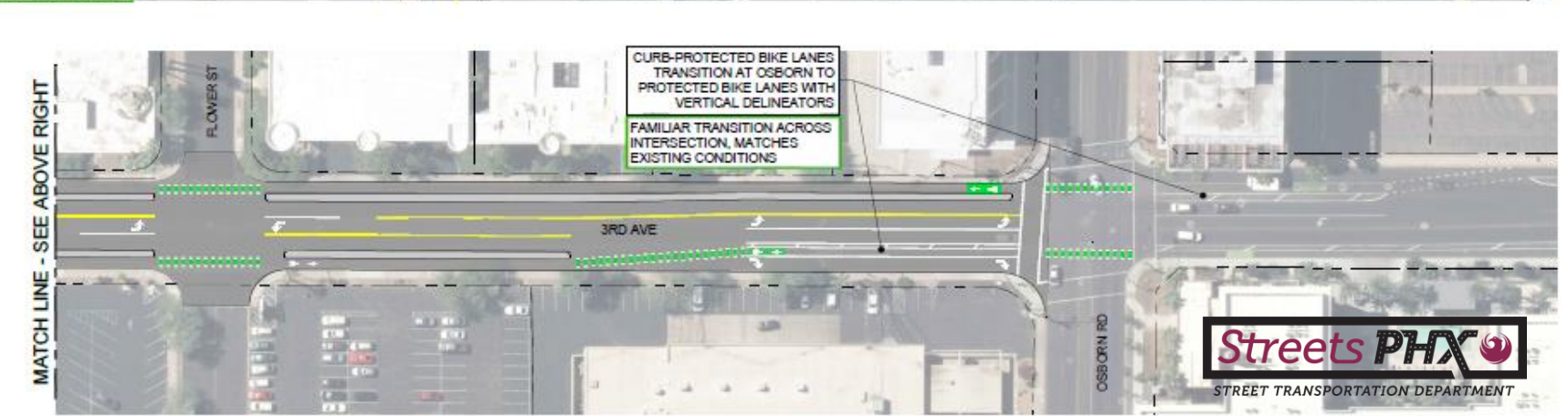
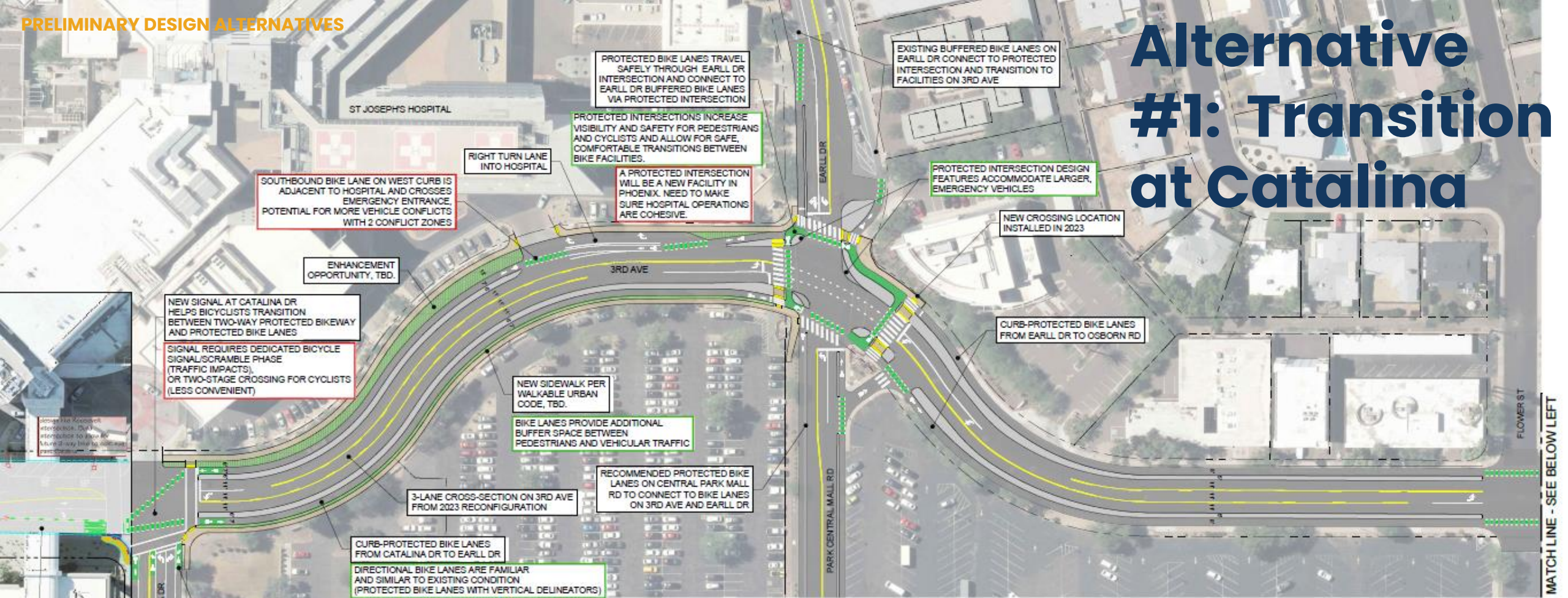


Cross-Section: Two-Way Protected Bikeway

Alternatives 2 and 3



Alternative #1: Transition at Catalina

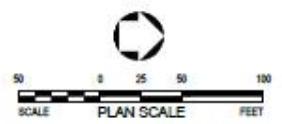
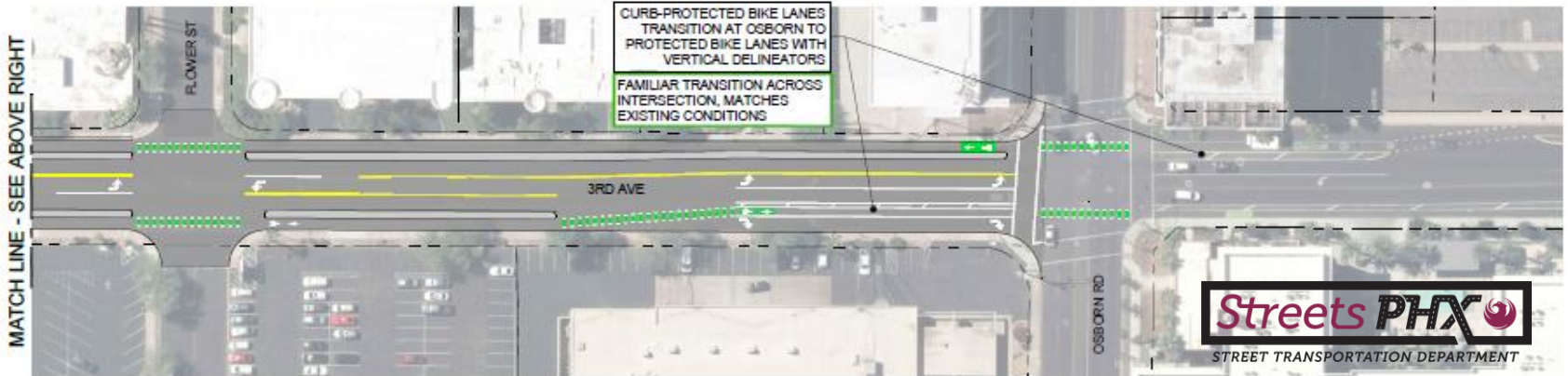
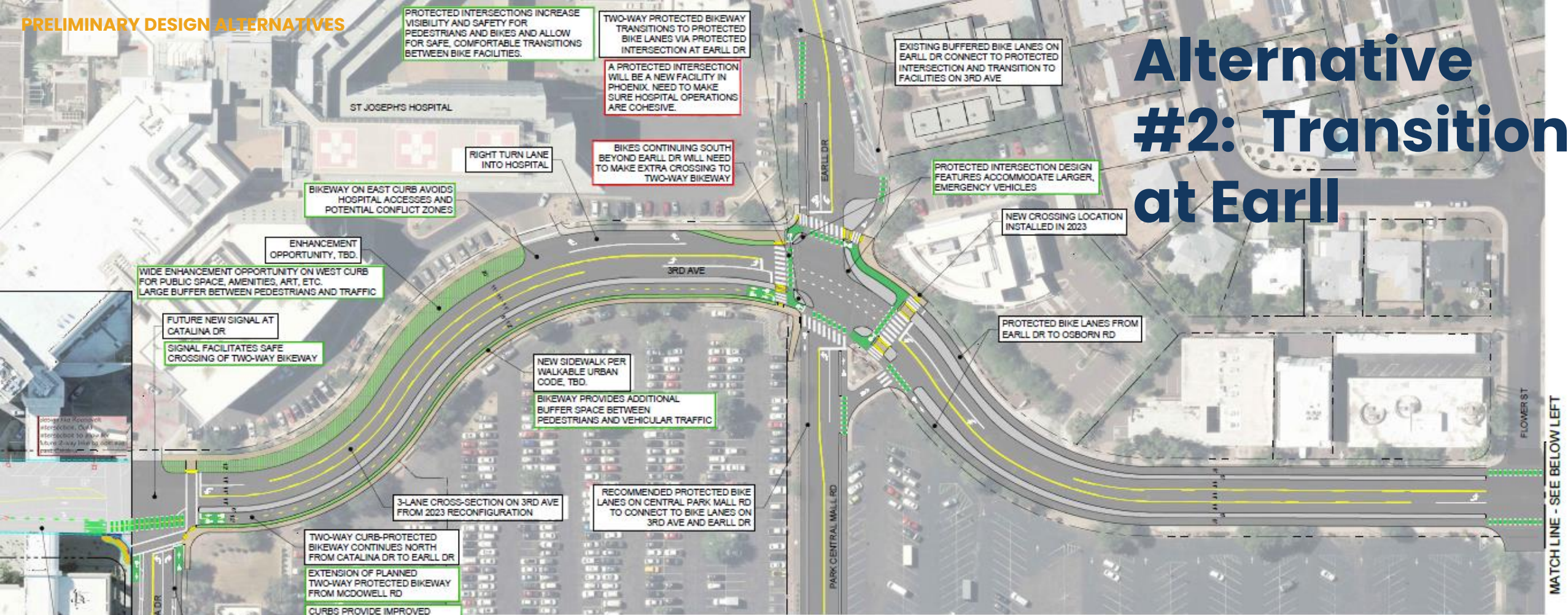


NOTE LEGEND:

PROJECT BENEFITS

PROJECT LIMITATIONS

Alternative #2: Transition at Earll

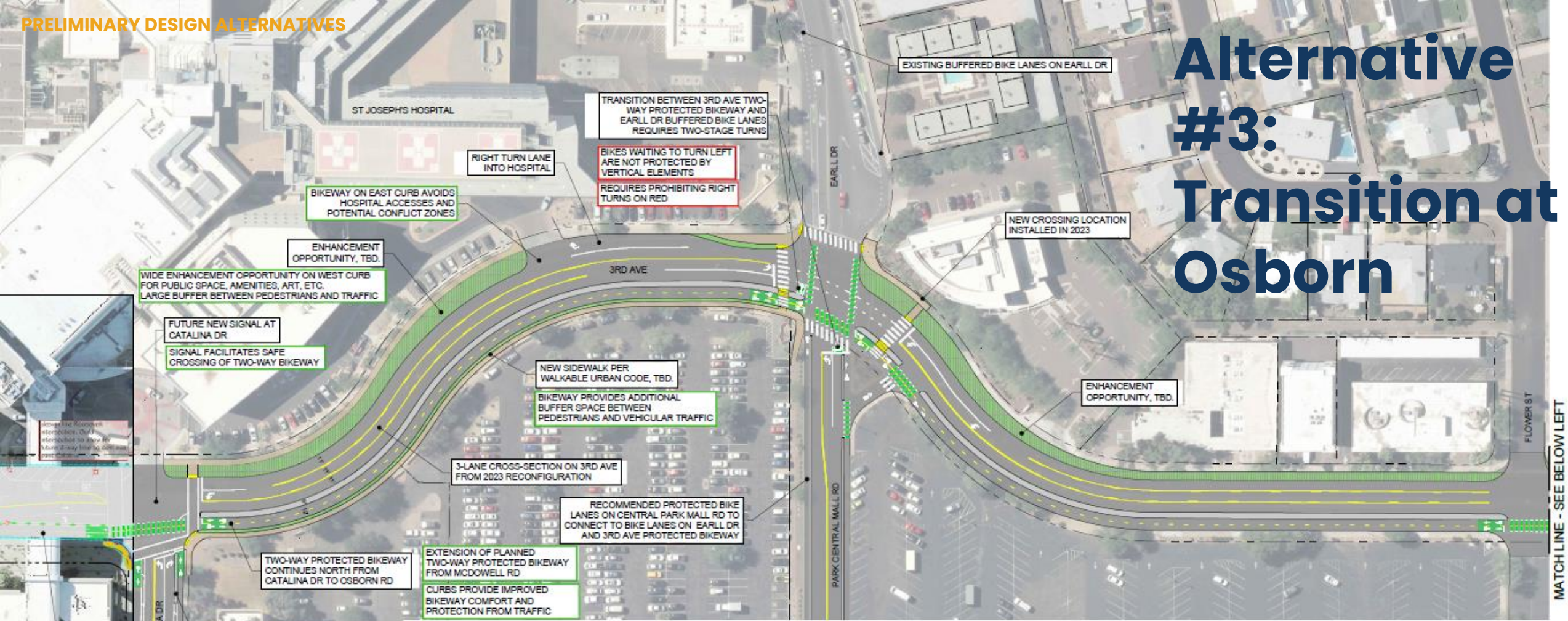


NOTE LEGEND:

PROJECT BENEFITS

PROJECT LIMITATIONS

Alternative #3: Transition at Osborn



NOTE LEGEND:

PROJECT BENEFITS

PROJECT LIMITATIONS

NEXT STEPS

NEXT STEPS

- **Stakeholder Input**
 - *Feb – Apr 2024*
- **Preferred Scenario Refinement**
 - *Spring 2024*
- **Design Concept Report**
 - *Summer 2024*

Sofia Mastikhina, CNU-A

Active Transportation Planner III

Sofia.mastikhina@phoenix.gov

phoenix.gov/streets/meetings



QUESTIONS & COMMENTS?

- Spanish Language Questions
- Pre-Registered Speakers
- Pre-Registered Questions
- Questions Submitted via the Q&A Box
- Comments sent via the Chat Box



**THANK YOU FOR YOUR
PARTICIPATION!**