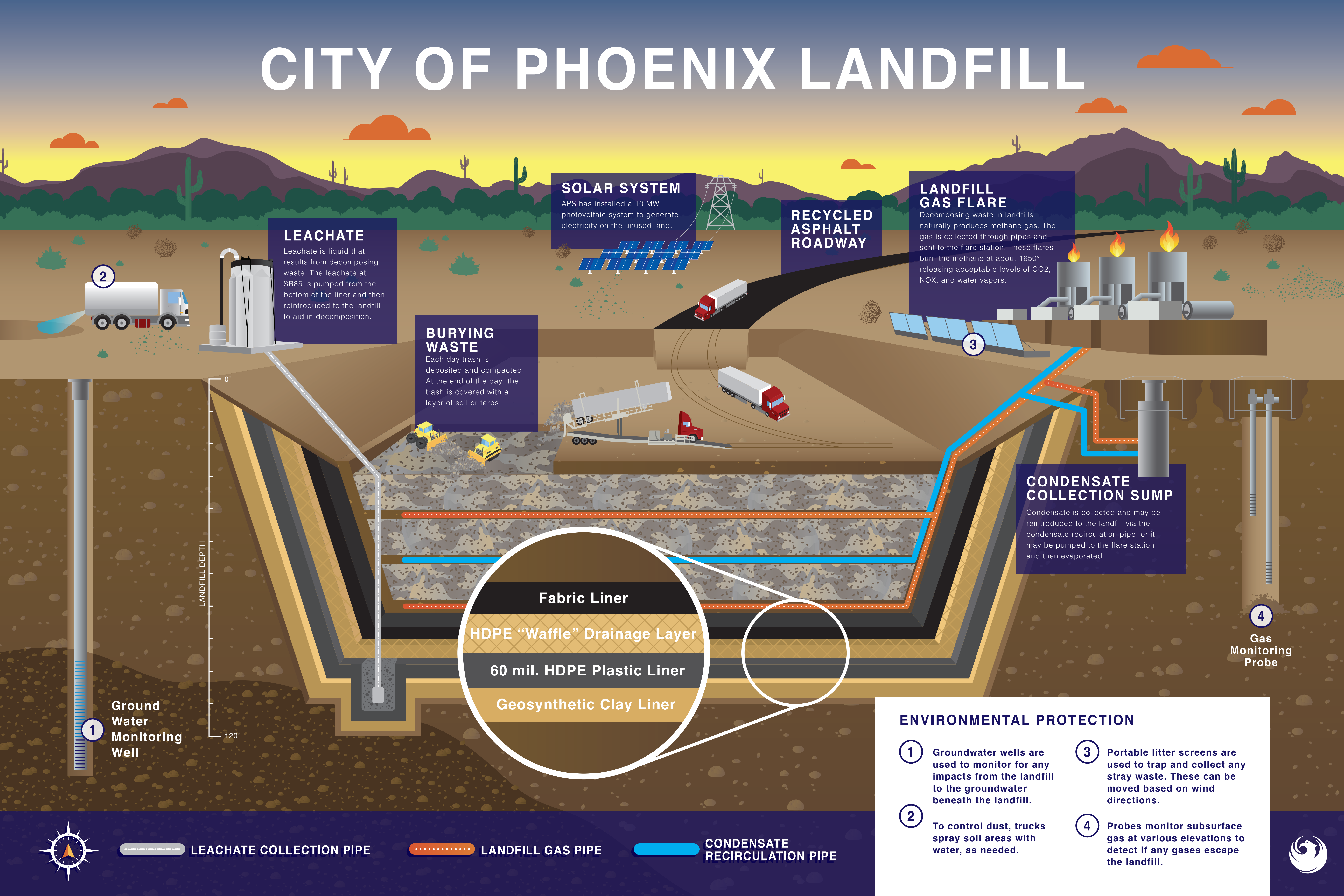


CITY OF PHOENIX LANDFILL



LEACHATE

Leachate is liquid that results from decomposing waste. The leachate at SR85 is pumped from the bottom of the liner and then reintroduced to the landfill to aid in decomposition.

SOLAR SYSTEM

APS has installed a 10 MW photovoltaic system to generate electricity on the unused land.

RECYCLED ASPHALT ROADWAY

LANDFILL GAS FLARE

Decomposing waste in landfills naturally produces methane gas. The gas is collected through pipes and sent to the flare station. These flares burn the methane at about 1650°F releasing acceptable levels of CO₂, NO_x, and water vapors.

BURYING WASTE

Each day trash is deposited and compacted. At the end of the day, the trash is covered with a layer of soil or tarps.

CONDENSATE COLLECTION SUMP

Condensate is collected and may be reintroduced to the landfill via the condensate recirculation pipe, or it may be pumped to the flare station and then evaporated.

Fabric Liner

HDPE "Waffle" Drainage Layer

60 mil. HDPE Plastic Liner

Geosynthetic Clay Liner

1 Ground Water Monitoring Well

4 Gas Monitoring Probe

ENVIRONMENTAL PROTECTION

- 1 Groundwater wells are used to monitor for any impacts from the landfill to the groundwater beneath the landfill.
- 2 To control dust, trucks spray soil areas with water, as needed.
- 3 Portable litter screens are used to trap and collect any stray waste. These can be moved based on wind directions.
- 4 Probes monitor subsurface gas at various elevations to detect if any gases escape the landfill.



LEACHATE COLLECTION PIPE

LANDFILL GAS PIPE

CONDENSATE RECIRCULATION PIPE

