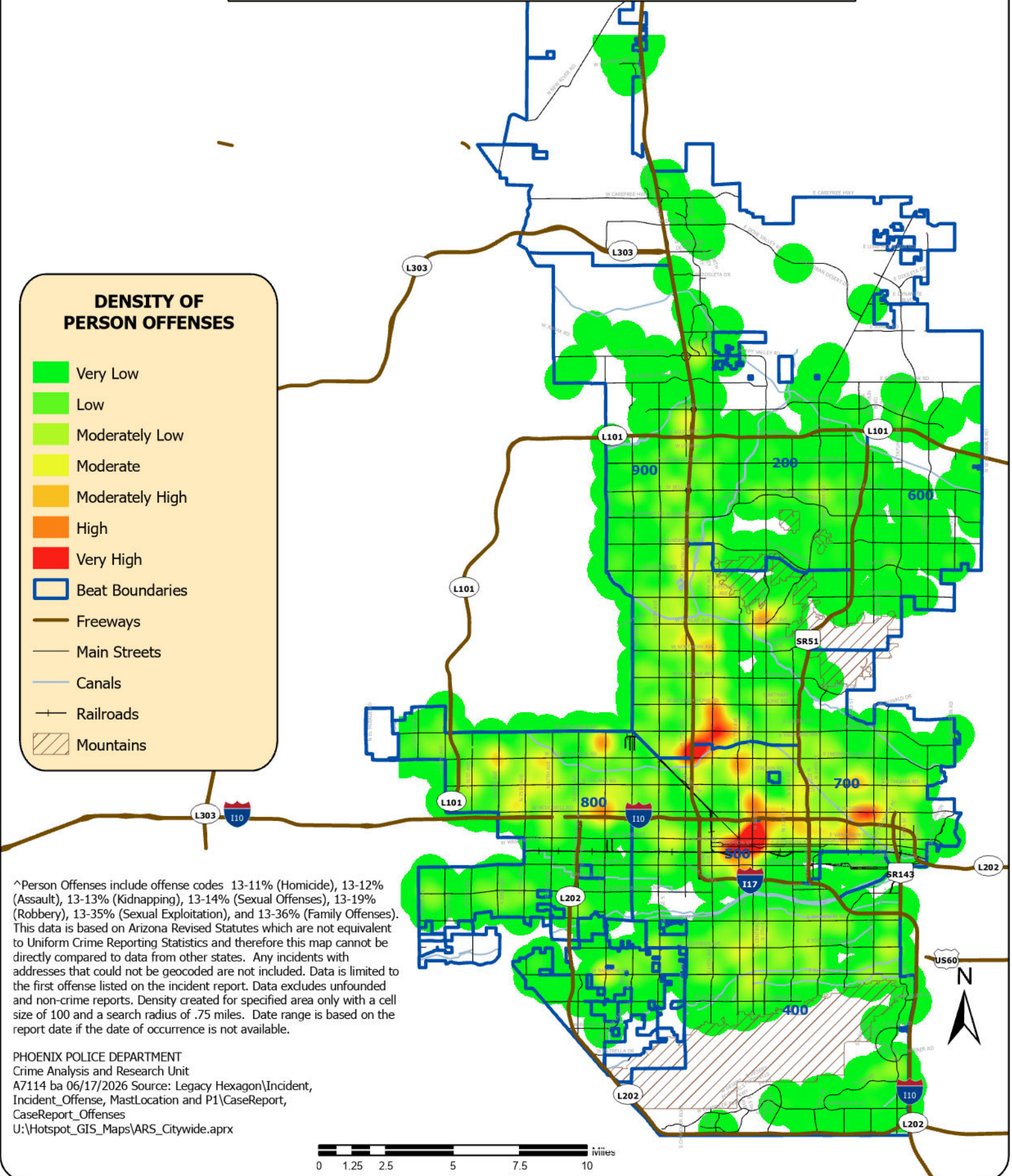


**CITY OF PHOENIX POLICE DEPARTMENT**  
**Arizona Revised Statutes (ARS) Incident Reports**  
**For Listed Person Offenses^**  
**Citywide**  
**Date Range: 11/01/2025 - 11/30/2025 | November 2025**



**DENSITY OF PERSON OFFENSES**

- Very Low
- Low
- Moderately Low
- Moderate
- Moderately High
- High
- Very High
- Beat Boundaries
- Freeways
- Main Streets
- Canals
- Railroads
- Mountains



^Person Offenses include offense codes 13-11% (Homicide), 13-12% (Assault), 13-13% (Kidnapping), 13-14% (Sexual Offenses), 13-19% (Robbery), 13-35% (Sexual Exploitation), and 13-36% (Family Offenses). This data is based on Arizona Revised Statutes which are not equivalent to Uniform Crime Reporting Statistics and therefore this map cannot be directly compared to data from other states. Any incidents with addresses that could not be geocoded are not included. Data is limited to the first offense listed on the incident report. Data excludes unfounded and non-crime reports. Density created for specified area only with a cell size of 100 and a search radius of .75 miles. Date range is based on the report date if the date of occurrence is not available.

