

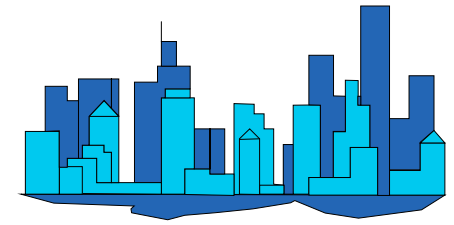


City of Phoenix

Monthly Count Of Actual Offenses Known To Police

Part 1 Crimes

By Uniform Crime Reporting (UCR) Classifications
2020 Calendar Year-To-Date



	JAN	FEB	MAR	1st QTR TOTAL	APR	MAY	JUN	2nd QTR TOTAL	JUL	AUG	SEP	3rd QTR TOTAL	OCT	NOV	DEC	4th QTR TOTAL	2020 YEAR TO DATE TOTAL
Criminal Homicide	18	13	13	44	14	19	16	49	16	18	22	56	26	12	13	51	200
a. Murder and Non-Negligent Manslaughter	18	12	12	42	14	19	14	47	16	18	20	54	23	10	12	45	188
b. Manslaughter by Negligence	0	1	1	2	0	0	2	2	0	0	2	2	3	2	1	6	12
Total Rape	86	88	101	275	89	89	80	258	86	89	111	286	87	80	82	249	1,068
a. Rape	83	77	97	257	79	84	76	239	82	87	104	273	80	77	81	238	1,007
b. Attempts to commit rape	3	11	4	18	10	5	4	19	4	2	7	13	7	3	1	11	61
Robbery	271	271	312	854	252	242	216	710	200	248	258	706	356	332	320	1,008	3,278
a. Firearm	104	105	125	334	86	63	68	217	80	82	83	245	131	123	117	371	1,167
b. Knife or Cutting Instrument	27	19	31	77	29	34	22	85	24	34	40	98	39	35	39	113	373
c. Other Dangerous Weapon	32	23	38	93	21	25	29	75	15	25	27	67	33	42	31	106	341
d. Strong-Arm (hands, fists, feet, etc.)	108	124	118	350	116	120	97	333	81	107	108	296	153	132	133	418	1,397
Aggravated Assault	582	583	712	1,877	805	893	780	2,478	828	889	798	2,515	813	747	683	2,243	9,113
Total Violent Crimes	957	955	1,138	3,050	1,160	1,243	1,092	3,495	1,130	1,244	1,189	3,563	1,282	1,171	1,098	3,551	13,659
Burglary	771	591	678	2,040	651	652	534	1,837	492	612	577	1,681	605	621	622	1,848	7,406
a. Forcible Entry	535	411	431	1,377	437	429	326	1,192	309	398	334	1,041	371	374	439	1,184	4,794
b. Unlawful Entry - No Force	172	145	199	516	175	175	170	520	156	194	207	557	192	206	142	540	2,133
c. Attempted Forcible Entry	64	35	48	147	39	48	38	125	27	20	36	83	42	41	41	124	479
Larceny - Theft	3,555	3,221	3,307	10,083	3,098	2,968	2,378	8,444	2,313	2,554	2,689	7,556	3,200	3,267	3,704	10,171	36,254
Motor Vehicle Theft	663	661	646	1,970	600	610	597	1,807	573	608	541	1,722	620	643	667	1,930	7,429
a. Autos	422	409	406	1,237	385	402	397	1,184	376	417	365	1,158	386	412	432	1,230	4,809
b. Trucks and Buses	199	219	196	614	158	150	159	467	149	139	133	421	186	182	175	543	2,045
c. Other Vehicles	42	33	44	119	57	58	41	156	48	52	43	143	48	49	60	157	575
Arson	27	28	17	72	33	25	29	87	28	23	18	69	30	20	19	69	297
Total Property Crimes	5,016	4,501	4,648	14,165	4,382	4,255	3,538	12,175	3,406	3,797	3,825	11,028	4,455	4,551	5,012	14,018	51,386
TOTAL PART 1 CRIMES	5,973	5,456	5,786	17,215	5,542	5,498	4,630	15,670	4,536	5,041	5,014	14,591	5,737	5,722	6,110	17,569	65,045

Motorcycles are now being grouped with "Other Vehicles" starting October 2015.

Does not include "Unfounded" cases by UCR definition.