



# Maryvale Village

## 107th Ave / Camelback Rd

Overall Score - 98 out of 300

Proposed



**Create a Network of Vibrant Cores, Centers and Corridors** 12 / 42

Scale & Intensity	<input type="radio"/>
Land Use Mix	<input type="radio"/>
Housing Mix	<input type="radio"/>

**Connect People and Places** 37 / 109

Transportation	<input type="radio"/>
Connectivity	<input type="radio"/>

**Strengthen Our Local Economy** 12 / 70

Employment	<input type="radio"/>
Education & Training	<input type="radio"/>
Arts & Culture	<input type="radio"/>

**Celebrate Our Diverse Communities & Neighborhoods** 18 / 47

Parks, Recreation & Open Space	<input type="radio"/>
Growth Projections	<input type="radio"/>
Safety & Livability	<input type="radio"/>

**Build the Most Sustainable Desert City** 19 / 32

Infrastructure	<input type="radio"/>
Environmental Health	<input type="radio"/>
Heat Resiliency & Shade	<input type="radio"/>





# Maryvale Village / TOC

## 35th Ave / I-10

Overall Score - 164 out of 300

Adopted



### Create a Network of Vibrant Cores, Centers and Corridors 15 / 42

Scale & Intensity	<input type="radio"/>
Land Use Mix	<input type="radio"/>
Housing Mix	<input type="radio"/>

### Connect People and Places 68 / 109

Transportation	<input type="radio"/>
Connectivity	<input type="radio"/>

### Strengthen Our Local Economy 38 / 70

Employment	<input type="radio"/>
Education & Training	<input type="radio"/>
Arts & Culture	<input type="radio"/>

### Celebrate Our Diverse Communities & Neighborhoods 23 / 47

Parks, Recreation & Open Space	<input type="radio"/>
Growth Projections	<input type="radio"/>
Safety & Livability	<input type="radio"/>

### Build the Most Sustainable Desert City 20 / 32

Infrastructure	<input type="radio"/>
Environmental Health	<input type="radio"/>
Heat Resiliency & Shade	<input type="radio"/>





# Maryvale Village / TOC

## 35th Ave / Indian School Rd

Overall Score - 157 out of 300

Proposed



### Create a Network of Vibrant Cores, Centers and Corridors 14 / 42

Scale & Intensity	<input type="radio"/>
Land Use Mix	<input type="radio"/>
Housing Mix	<input type="radio"/>

### Connect People and Places 62 / 109

Transportation	<input type="radio"/>
Connectivity	<input type="radio"/>

### Strengthen Our Local Economy 37 / 70

Employment	<input type="radio"/>
Education & Training	<input type="radio"/>
Arts & Culture	<input type="radio"/>

### Celebrate Our Diverse Communities & Neighborhoods 19 / 47

Parks, Recreation & Open Space	<input type="radio"/>
Growth Projections	<input type="radio"/>
Safety & Livability	<input type="radio"/>

### Build the Most Sustainable Desert City 25 / 32

Infrastructure	<input type="radio"/>
Environmental Health	<input type="radio"/>
Heat Resiliency & Shade	<input type="radio"/>

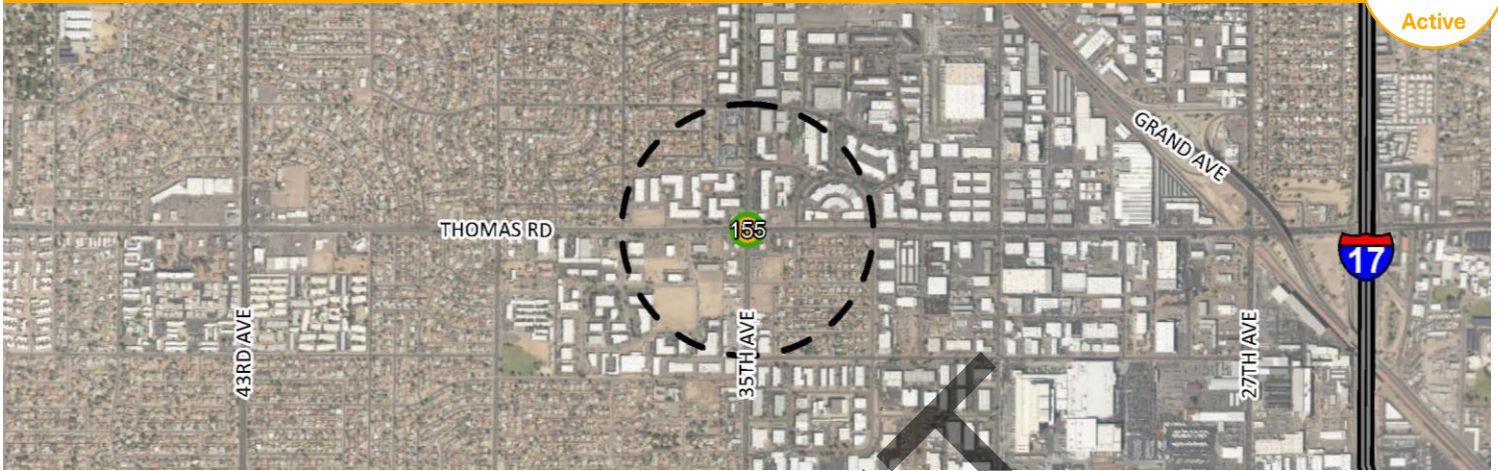




# Maryvale Village 35th Ave / Thomas Rd

Overall Score - 155 out of 300

Proposed



### Create a Network of Vibrant Cores, Centers and Corridors 13 / 42

Scale & Intensity

Land Use Mix

Housing Mix

### Connect People and Places 49 / 109

Transportation

Connectivity

### Strengthen Our Local Economy 53 / 70

Employment

Education & Training

Arts & Culture

### Celebrate Our Diverse Communities & Neighborhoods 19 / 47

Parks, Recreation & Open Space

Growth Projections

Safety & Livability

### Build the Most Sustainable Desert City 21 / 32

Infrastructure

Environmental Health

Heat Resiliency & Shade



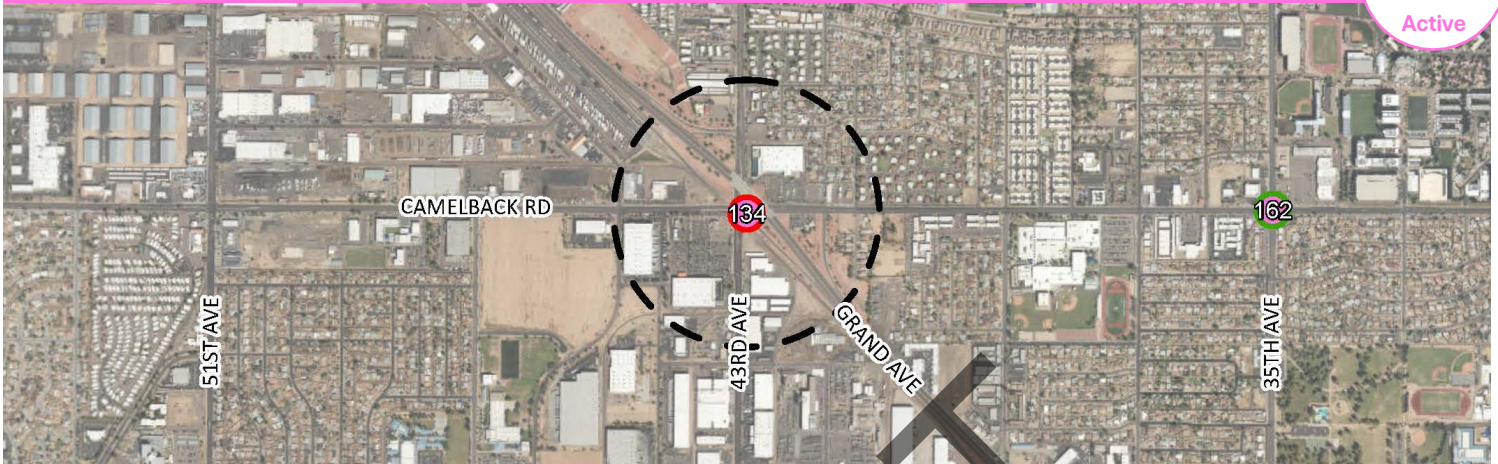


# Maryvale Village

## 43rd Ave / Camelback Rd

Overall Score - 134 out of 300

Proposed



### Create a Network of Vibrant Cores, Centers and Corridors 14 / 42

Scale & Intensity	○
Land Use Mix	◐
Housing Mix	◐

### Connect People and Places 43 / 109

Transportation	◐
Connectivity	○

### Strengthen Our Local Economy 33 / 70

Employment	◐
Education & Training	◐
Arts & Culture	◐

### Celebrate Our Diverse Communities & Neighborhoods 23 / 47

Parks, Recreation & Open Space	◐
Growth Projections	◐
Safety & Livability	◐

### Build the Most Sustainable Desert City 21 / 32

Infrastructure	●
Environmental Health	◐
Heat Resiliency & Shade	◐





# Maryvale Village / TOC

## 51st Ave / I-10

Overall Score - 152 out of 300

Adopted



### Create a Network of Vibrant Cores, Centers and Corridors 12 / 42

Scale & Intensity	<input type="radio"/>
Land Use Mix	<input type="radio"/>
Housing Mix	<input type="radio"/>

### Connect People and Places 62 / 109

Transportation	<input type="radio"/>
Connectivity	<input type="radio"/>

### Strengthen Our Local Economy 32 / 70

Employment	<input type="radio"/>
Education & Training	<input type="radio"/>
Arts & Culture	<input type="radio"/>

### Celebrate Our Diverse Communities & Neighborhoods 24 / 47

Parks, Recreation & Open Space	<input type="radio"/>
Growth Projections	<input type="radio"/>
Safety & Livability	<input type="radio"/>

### Build the Most Sustainable Desert City 22 / 32

Infrastructure	<input type="radio"/>
Environmental Health	<input type="radio"/>
Heat Resiliency & Shade	<input type="radio"/>



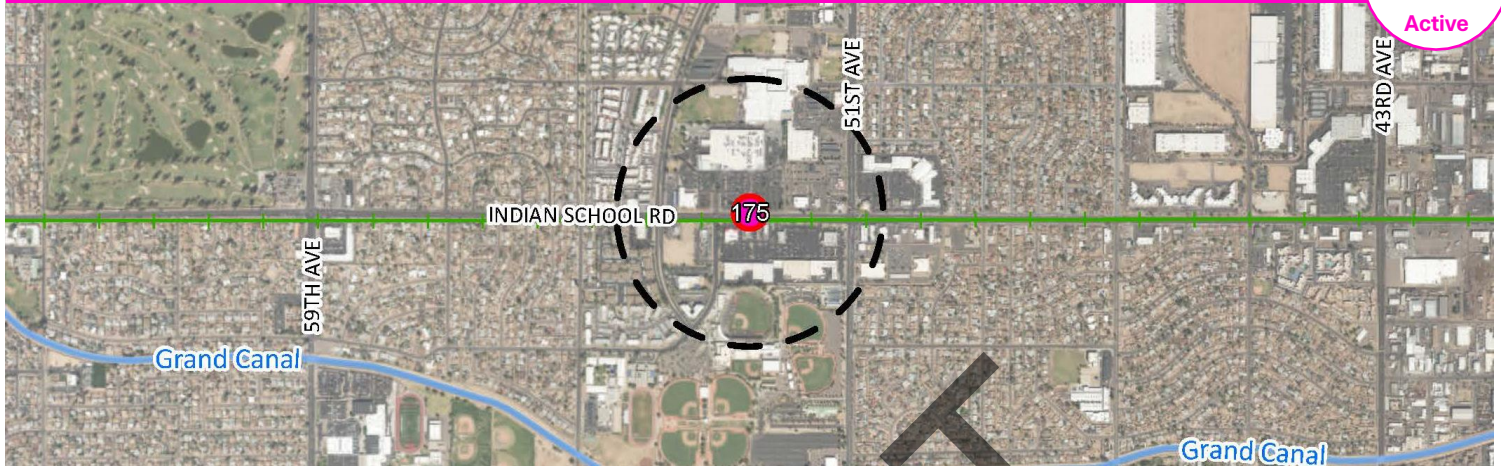


# Maryvale Village / TOC

## 53rd Ave / Indian School Rd (Secondary Core)

Overall Score - 175 out of 300

Proposed



**Create a Network of Vibrant Cores, Centers and Corridors** **21 / 42**

Scale & Intensity	●
Land Use Mix	●
Housing Mix	●

**Connect People and Places** **65 / 109**

Transportation	●
Connectivity	●

**Strengthen Our Local Economy** **39 / 70**

Employment	●
Education & Training	●
Arts & Culture	●

**Celebrate Our Diverse Communities & Neighborhoods** **28 / 47**

Parks, Recreation & Open Space	●
Growth Projections	●
Safety & Livability	●

**Build the Most Sustainable Desert City** **22 / 32**

Infrastructure	●
Environmental Health	●
Heat Resiliency & Shade	●





# Maryvale Village / TOC

## 59th Ave / I-10

Overall Score - 154 out of 300

Adopted



### Create a Network of Vibrant Cores, Centers and Corridors 14 / 42

Scale & Intensity	<input type="radio"/>
Land Use Mix	<input type="radio"/>
Housing Mix	<input type="radio"/>

### Connect People and Places 62 / 109

Transportation	<input type="radio"/>
Connectivity	<input type="radio"/>

### Strengthen Our Local Economy 29 / 70

Employment	<input type="radio"/>
Education & Training	<input type="radio"/>
Arts & Culture	<input type="radio"/>

### Celebrate Our Diverse Communities & Neighborhoods 31 / 47

Parks, Recreation & Open Space	<input type="radio"/>
Growth Projections	<input type="radio"/>
Safety & Livability	<input type="radio"/>

### Build the Most Sustainable Desert City 18 / 32

Infrastructure	<input type="radio"/>
Environmental Health	<input type="radio"/>
Heat Resiliency & Shade	<input type="radio"/>





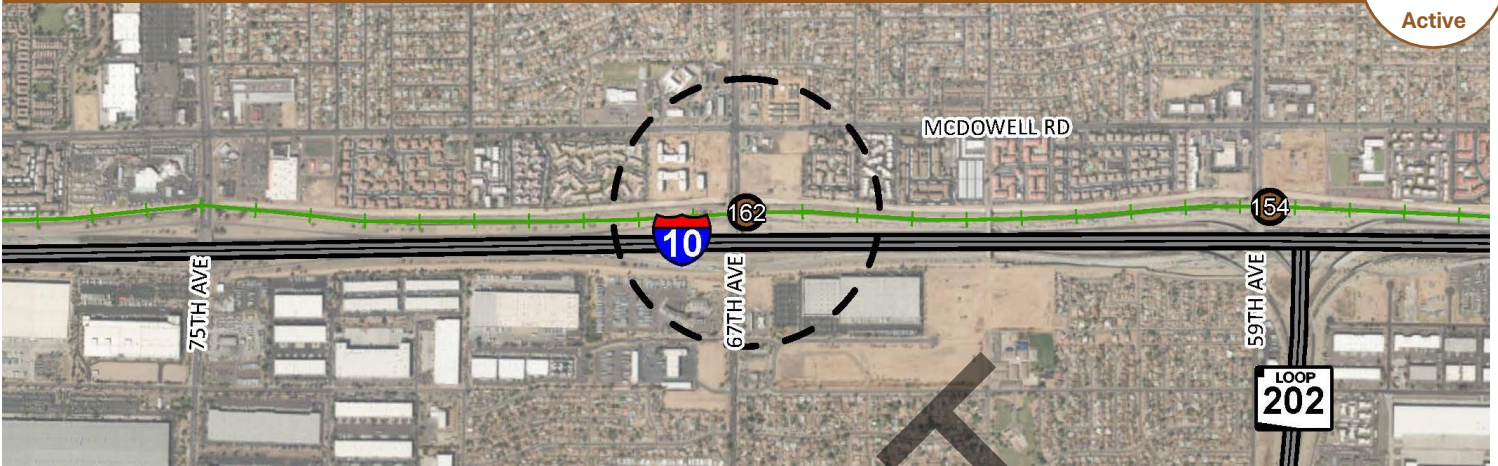


# Maryvale Village / TOC

## 67th Ave / I-10

Overall Score - 162 out of 300

Adopted



### Create a Network of Vibrant Cores, Centers and Corridors 15 / 42

Scale & Intensity	<input type="radio"/>
Land Use Mix	<input type="radio"/>
Housing Mix	<input type="radio"/>

### Connect People and Places 67 / 109

Transportation	<input type="radio"/>
Connectivity	<input type="radio"/>

### Strengthen Our Local Economy 26 / 70

Employment	<input type="radio"/>
Education & Training	<input type="radio"/>
Arts & Culture	<input type="radio"/>

### Celebrate Our Diverse Communities & Neighborhoods 31 / 47

Parks, Recreation & Open Space	<input type="radio"/>
Growth Projections	<input type="radio"/>
Safety & Livability	<input type="radio"/>

### Build the Most Sustainable Desert City 23 / 32

Infrastructure	<input type="radio"/>
Environmental Health	<input type="radio"/>
Heat Resiliency & Shade	<input type="radio"/>



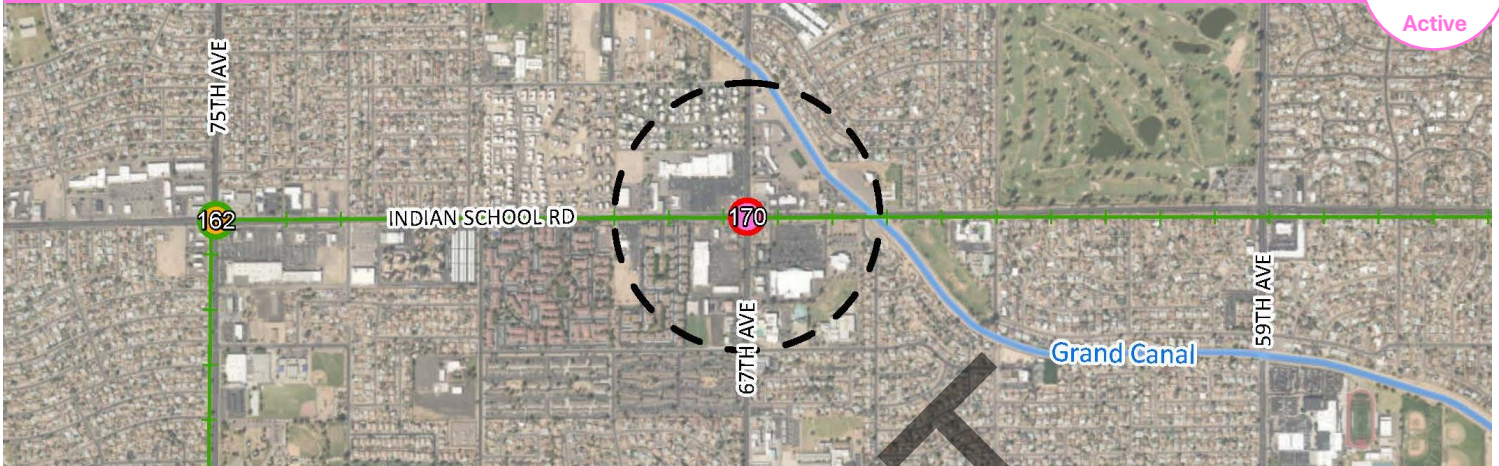


# Maryvale Village / TOC

## 67th Ave / Indian School Rd

Overall Score - 166 out of 300

Proposed



### Create a Network of Vibrant Cores, Centers and Corridors 16 / 42

Scale & Intensity	<input type="radio"/>
Land Use Mix	<input type="radio"/>
Housing Mix	<input type="radio"/>

### Connect People and Places 64 / 109

Transportation	<input type="radio"/>
Connectivity	<input type="radio"/>

### Strengthen Our Local Economy 29 / 70

Employment	<input type="radio"/>
Education & Training	<input type="radio"/>
Arts & Culture	<input type="radio"/>

### Celebrate Our Diverse Communities & Neighborhoods 32 / 47

Parks, Recreation & Open Space	<input type="radio"/>
Growth Projections	<input type="radio"/>
Safety & Livability	<input type="radio"/>

### Build the Most Sustainable Desert City 25 / 32

Infrastructure	<input type="radio"/>
Environmental Health	<input type="radio"/>
Heat Resiliency & Shade	<input type="radio"/>



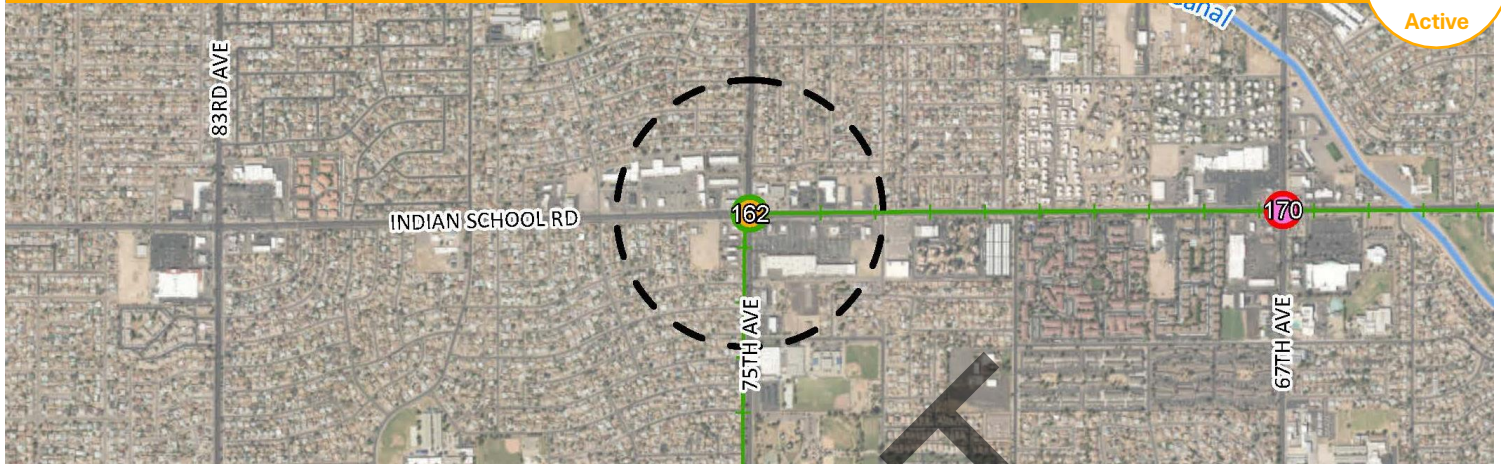


# Maryvale Village

## 75th Ave / Indian School Rd

Overall Score - 162 out of 300

Proposed



### Create a Network of Vibrant Cores, Centers and Corridors 15 / 42

Scale & Intensity	<input type="radio"/>
Land Use Mix	<input type="radio"/>
Housing Mix	<input type="radio"/>

### Connect People and Places 60 / 109

Transportation	<input type="radio"/>
Connectivity	<input type="radio"/>

### Strengthen Our Local Economy 37 / 70

Employment	<input type="radio"/>
Education & Training	<input type="radio"/>
Arts & Culture	<input type="radio"/>

### Celebrate Our Diverse Communities & Neighborhoods 27 / 47

Parks, Recreation & Open Space	<input type="radio"/>
Growth Projections	<input type="radio"/>
Safety & Livability	<input type="radio"/>

### Build the Most Sustainable Desert City 23 / 32

Infrastructure	<input type="radio"/>
Environmental Health	<input type="radio"/>
Heat Resiliency & Shade	<input type="radio"/>



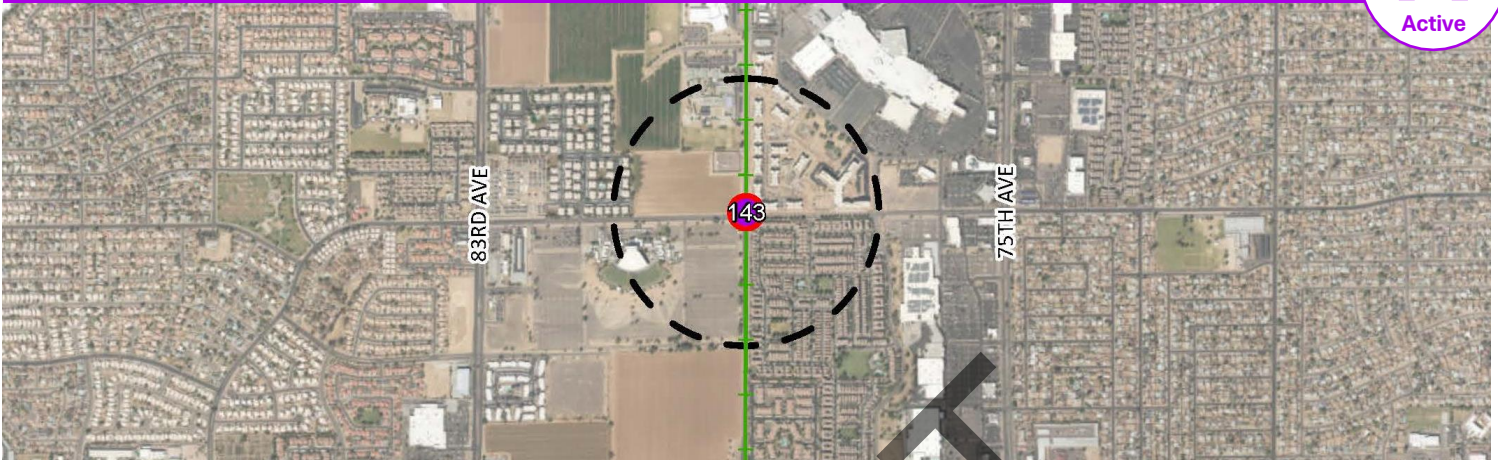


# Maryvale Village / TOC

## 79th Ave / Encanto Blvd (Primary Core)

Overall Score - 143 out of 300

Proposed



### Create a Network of Vibrant Cores, Centers and Corridors 21 / 42

Scale & Intensity	●
Land Use Mix	●
Housing Mix	●

### Connect People and Places 53 / 109

Transportation	●
Connectivity	●

### Strengthen Our Local Economy 27 / 70

Employment	●
Education & Training	○
Arts & Culture	●

### Celebrate Our Diverse Communities & Neighborhoods 24 / 47

Parks, Recreation & Open Space	●
Growth Projections	●
Safety & Livability	●

### Build the Most Sustainable Desert City 18 / 32

Infrastructure	●
Environmental Health	●
Heat Resiliency & Shade	●



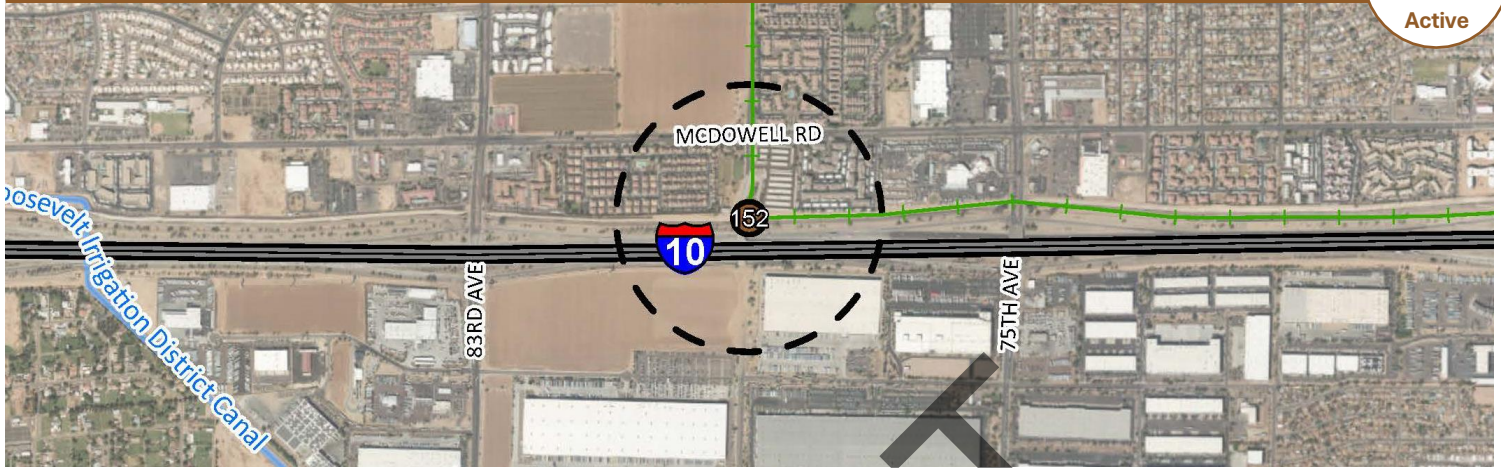


# Maryvale Village / TOC

## 79th Ave / I-10

**Overall Score - 152 out of 300**

**Adopted**



**Create a Network of Vibrant Cores, Centers and Corridors** **19 / 42**

Scale & Intensity	●
Land Use Mix	●
Housing Mix	●

**Connect People and Places** **67 / 109**

Transportation	●
Connectivity	●

**Strengthen Our Local Economy** **24 / 70**

Employment	●
Education & Training	○
Arts & Culture	●

**Celebrate Our Diverse Communities & Neighborhoods** **22 / 47**

Parks, Recreation & Open Space	●
Growth Projections	●
Safety & Livability	●

**Build the Most Sustainable Desert City** **20 / 32**

Infrastructure	●
Environmental Health	●
Heat Resiliency & Shade	●



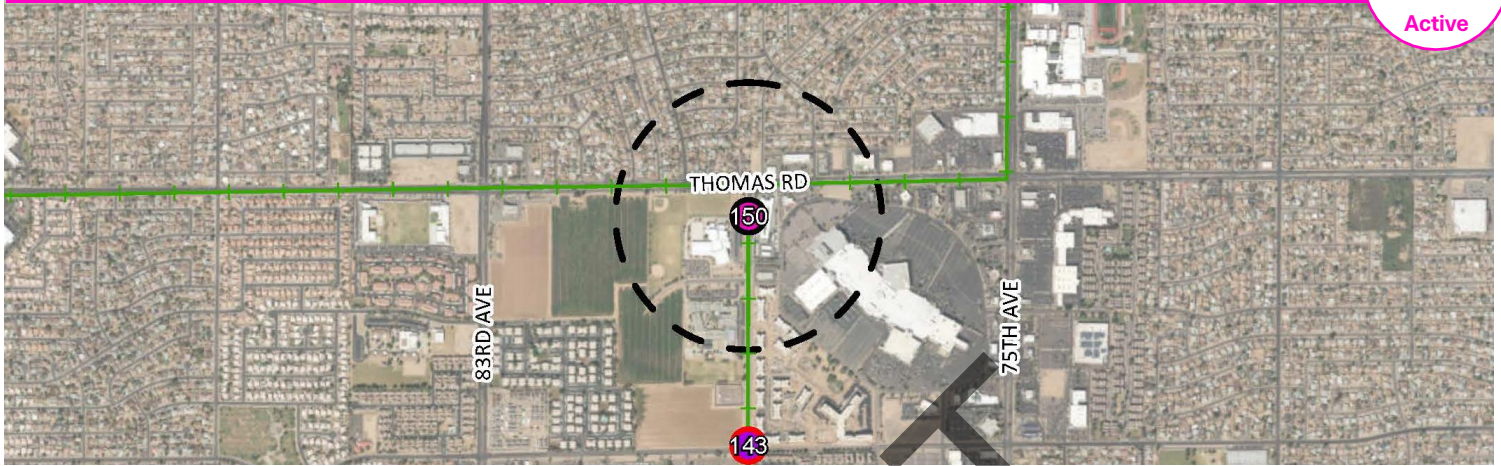


# Maryvale Village / TOC

## 79th Ave / Thomas Rd (Desert Sky Mall)

Overall Score - 150 out of 300

Adopted



### Create a Network of Vibrant Cores, Centers and Corridors 20 / 42

Scale & Intensity	●
Land Use Mix	●
Housing Mix	●

### Connect People and Places 53 / 109

Transportation	●
Connectivity	●

### Strengthen Our Local Economy 29 / 70

Employment	●
Education & Training	○
Arts & Culture	●

### Celebrate Our Diverse Communities & Neighborhoods 26 / 47

Parks, Recreation & Open Space	●
Growth Projections	●
Safety & Livability	●

### Build the Most Sustainable Desert City 22 / 32

Infrastructure	●
Environmental Health	●
Heat Resiliency & Shade	●





# Maryvale Village

## 91st Ave / Thomas Rd

Overall Score - 142 out of 300

Proposed



### Create a Network of Vibrant Cores, Centers and Corridors 15 / 42

Scale & Intensity	○
Land Use Mix	◐
Housing Mix	◐

### Connect People and Places 58 / 109

Transportation	◐
Connectivity	◐

### Strengthen Our Local Economy 32 / 70

Employment	◐
Education & Training	◐
Arts & Culture	◐

### Celebrate Our Diverse Communities & Neighborhoods 17 / 47

Parks, Recreation & Open Space	●
Growth Projections	○
Safety & Livability	◐

### Build the Most Sustainable Desert City 20 / 32

Infrastructure	●
Environmental Health	○
Heat Resiliency & Shade	◐



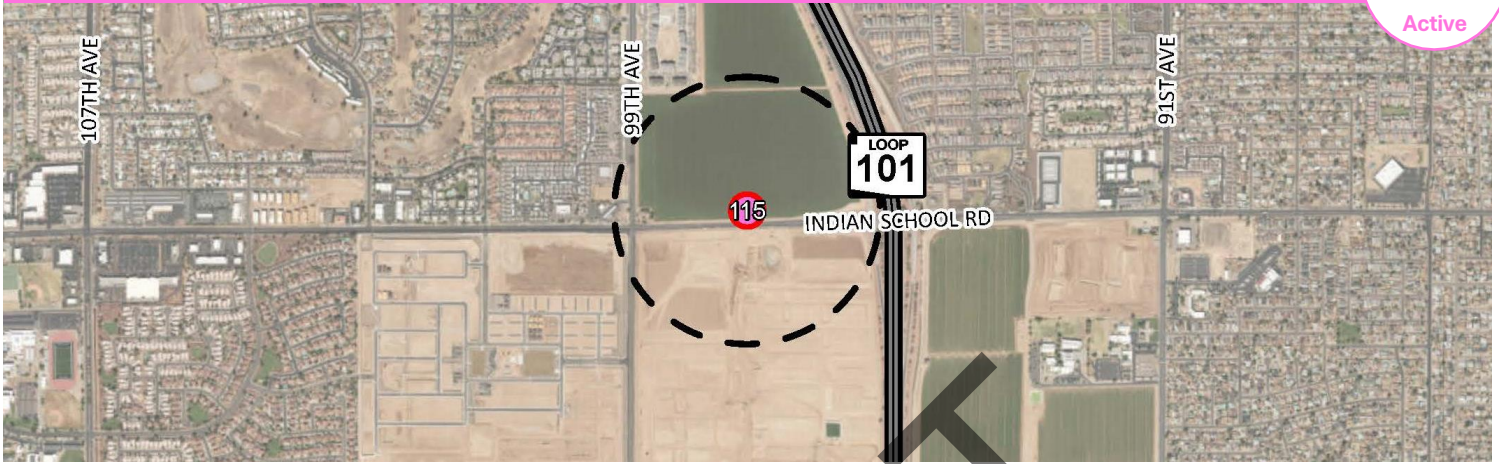


# Maryvale Village

## 99th Ave / Indian School Rd

Overall Score - 115 out of 300

Proposed



### Create a Network of Vibrant Cores, Centers and Corridors 14 / 42

Scale & Intensity	<input type="radio"/>
Land Use Mix	<input type="radio"/>
Housing Mix	<input type="radio"/>

### Connect People and Places 41 / 109

Transportation	<input type="radio"/>
Connectivity	<input type="radio"/>

### Strengthen Our Local Economy 23 / 70

Employment	<input type="radio"/>
Education & Training	<input type="radio"/>
Arts & Culture	<input type="radio"/>

### Celebrate Our Diverse Communities & Neighborhoods 16 / 47

Parks, Recreation & Open Space	<input type="radio"/>
Growth Projections	<input type="radio"/>
Safety & Livability	<input type="radio"/>

### Build the Most Sustainable Desert City 21 / 32

Infrastructure	<input type="radio"/>
Environmental Health	<input type="radio"/>
Heat Resiliency & Shade	<input type="radio"/>

