

Estrella Village 107th Ave / Buckeye Rd

Overall Score - 88 out of 300

Proposed



Create a Network of Vibrant Cores, Centers and Corridors 11 / 42

Scale & Intensity	<input type="radio"/>
Land Use Mix	<input type="radio"/>
Housing Mix	<input type="radio"/>

Connect People and Places 35 / 109

Transportation	<input type="radio"/>
Connectivity	<input checked="" type="radio"/>

Celebrate Our Diverse Communities & Neighborhoods 12 / 47

Parks, Recreation & Open Space	<input type="radio"/>
Growth Projections	<input checked="" type="radio"/>
Safety & Livability	<input checked="" type="radio"/>

Strengthen Our Local Economy 18 / 70

Employment	<input checked="" type="radio"/>
Education & Training	<input type="radio"/>
Arts & Culture	<input type="radio"/>

Build the Most Sustainable Desert City 12 / 32

Infrastructure	<input checked="" type="radio"/>
Environmental Health	<input type="radio"/>
Heat Resiliency & Shade	<input checked="" type="radio"/>



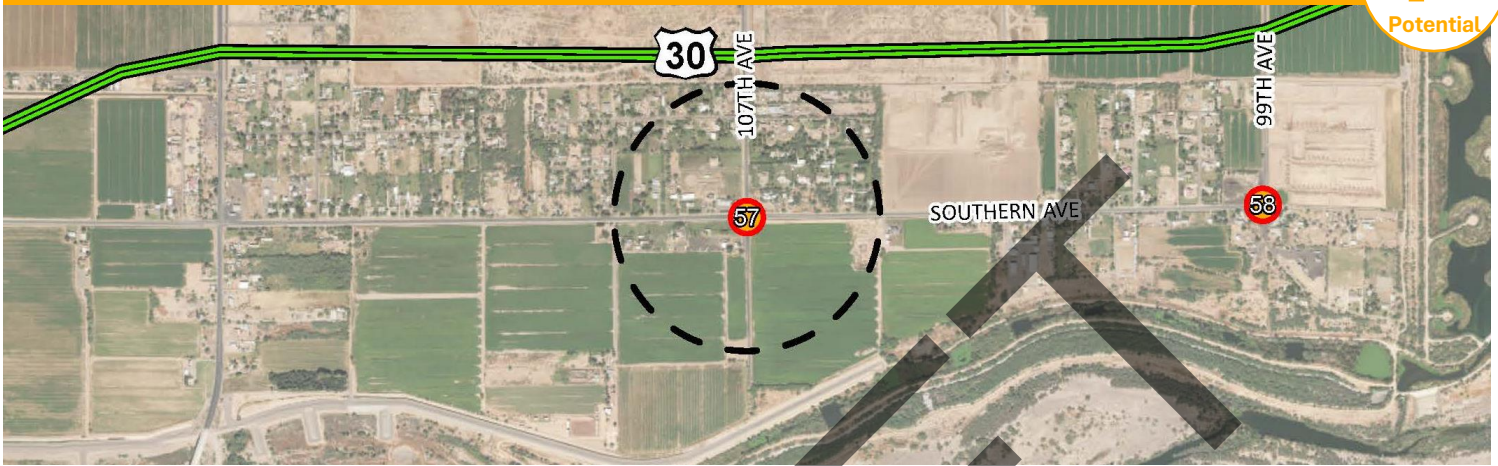


Estrella Village / RIO

107th Ave / Southern Ave

Overall Score - 57 out of 300

Proposed



Create a Network of Vibrant Cores, Centers and Corridors 0 / 42

Scale & Intensity	<input type="radio"/>
Land Use Mix	<input type="radio"/>
Housing Mix	<input type="radio"/>

Connect People and Places 27 / 109

Transportation	<input type="radio"/>
Connectivity	<input type="radio"/>

Strengthen Our Local Economy 9 / 70

Employment	<input type="radio"/>
Education & Training	<input type="radio"/>
Arts & Culture	<input type="radio"/>

Celebrate Our Diverse Communities & Neighborhoods 11 / 47

Parks, Recreation & Open Space	<input type="radio"/>
Growth Projections	<input checked="" type="radio"/>
Safety & Livability	<input type="radio"/>

Build the Most Sustainable Desert City 10 / 32

Infrastructure	<input checked="" type="radio"/>
Environmental Health	<input type="radio"/>
Heat Resiliency & Shade	<input type="radio"/>





Estrella Village / RIO 19th Ave / Lower Buckeye Rd

Overall Score - 128 out of 300

Deleted



Create a Network of Vibrant Cores, Centers and Corridors 8 / 42

Scale & Intensity	<input type="checkbox"/>
Land Use Mix	<input type="checkbox"/>
Housing Mix	<input type="checkbox"/>

Connect People and Places 43 / 109

Transportation	<input type="checkbox"/>
Connectivity	<input type="checkbox"/>

Strengthen Our Local Economy 31 / 70

Employment	<input type="checkbox"/>
Education & Training	<input type="checkbox"/>
Arts & Culture	<input type="checkbox"/>

Celebrate Our Diverse Communities & Neighborhoods 29 / 47

Parks, Recreation & Open Space	<input type="checkbox"/>
Growth Projections	<input type="checkbox"/>
Safety & Livability	<input type="checkbox"/>

Build the Most Sustainable Desert City 17 / 32

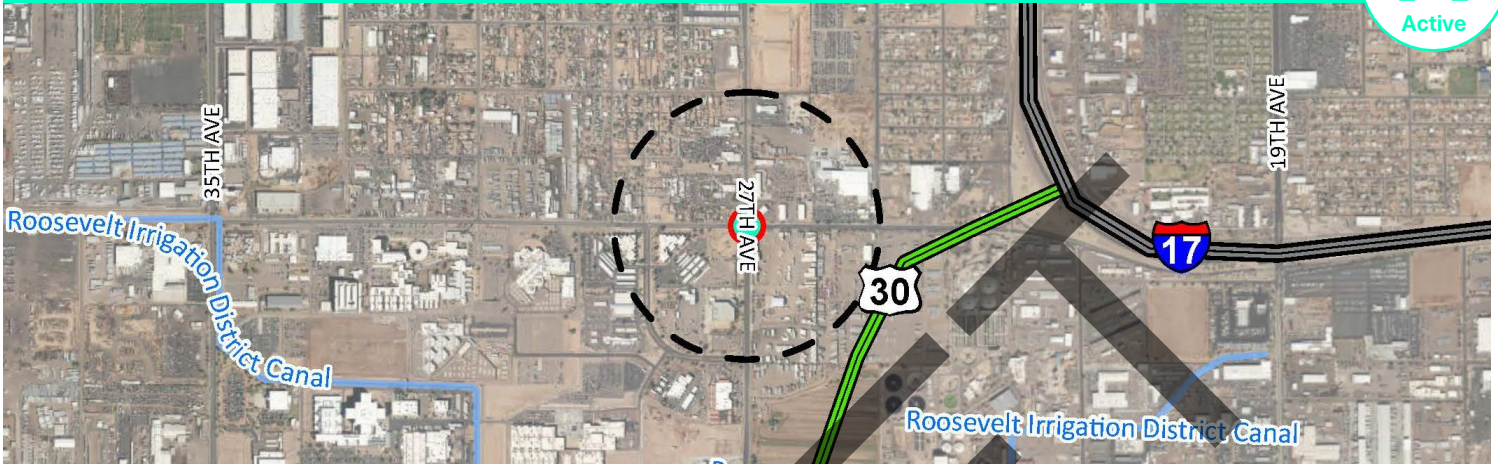
Infrastructure	<input type="checkbox"/>
Environmental Health	<input type="checkbox"/>
Heat Resiliency & Shade	<input type="checkbox"/>



Estrella Village 27th Ave / Durango St

Overall Score - 126 out of 300

Proposed



Create a Network of Vibrant Cores, Centers and Corridors 9 / 42

Scale & Intensity	<input type="radio"/>
Land Use Mix	<input type="radio"/>
Housing Mix	<input type="radio"/>

Connect People and Places 46 / 109

Transportation	<input type="radio"/>
Connectivity	<input checked="" type="radio"/>

Celebrate Our Diverse Communities & Neighborhoods 25 / 47

Parks, Recreation & Open Space	<input checked="" type="radio"/>
Growth Projections	<input type="radio"/>
Safety & Livability	<input type="radio"/>

Strengthen Our Local Economy 27 / 70

Employment	<input checked="" type="radio"/>
Education & Training	<input type="radio"/>
Arts & Culture	<input checked="" type="radio"/>

Build the Most Sustainable Desert City 19 / 32

Infrastructure	<input checked="" type="radio"/>
Environmental Health	<input type="radio"/>
Heat Resiliency & Shade	<input checked="" type="radio"/>

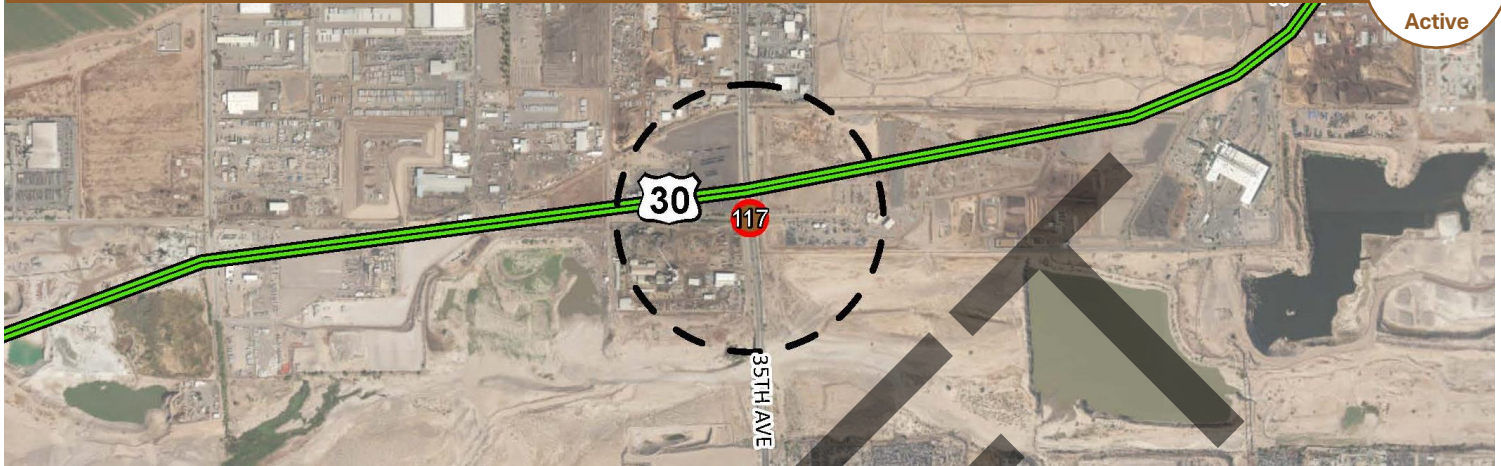




Estrella Village / RIO 35th Ave / Elwood St

Overall Score - 117 out of 300

Proposed



Create a Network of Vibrant Cores, Centers and Corridors 5 / 42

Scale & Intensity	<input type="radio"/>
Land Use Mix	<input type="radio"/>
Housing Mix	<input type="radio"/>

Connect People and Places 49 / 109

Transportation	<input type="radio"/>
Connectivity	<input checked="" type="radio"/>

Strengthen Our Local Economy 25 / 70

Employment	<input checked="" type="radio"/>
Education & Training	<input type="radio"/>
Arts & Culture	<input type="radio"/>

Celebrate Our Diverse Communities & Neighborhoods 20 / 47

Parks, Recreation & Open Space	<input checked="" type="radio"/>
Growth Projections	<input type="radio"/>
Safety & Livability	<input checked="" type="radio"/>

Build the Most Sustainable Desert City 18 / 32

Infrastructure	<input checked="" type="radio"/>
Environmental Health	<input type="radio"/>
Heat Resiliency & Shade	<input checked="" type="radio"/>

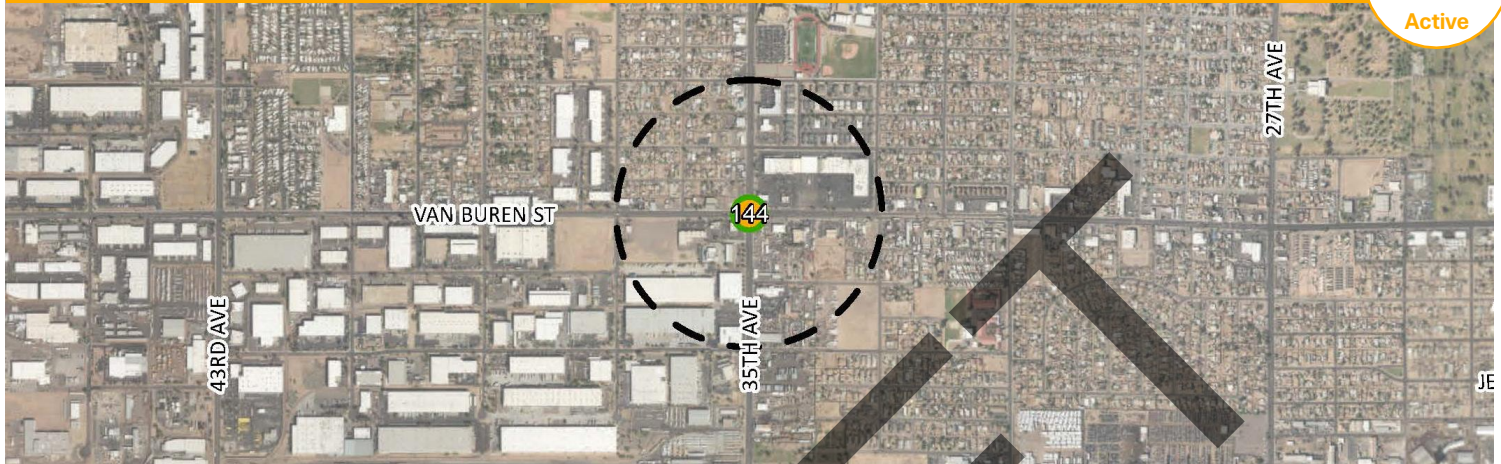




Estrella Village 35th Avenue / Van Buren St

Overall Score - 144 out of 300

Proposed



Create a Network of Vibrant Cores, Centers and Corridors 15 / 42

Scale & Intensity	<input type="radio"/>
Land Use Mix	<input type="radio"/>
Housing Mix	<input type="radio"/>

Connect People and Places 49 / 109

Transportation	<input type="radio"/>
Connectivity	<input type="radio"/>

Strengthen Our Local Economy 36 / 70

Employment	<input type="radio"/>
Education & Training	<input type="radio"/>
Arts & Culture	<input type="radio"/>

Celebrate Our Diverse Communities & Neighborhoods 22 / 47

Parks, Recreation & Open Space	<input type="radio"/>
Growth Projections	<input type="radio"/>
Safety & Livability	<input type="radio"/>

Build the Most Sustainable Desert City 22 / 32

Infrastructure	<input type="radio"/>
Environmental Health	<input type="radio"/>
Heat Resiliency & Shade	<input type="radio"/>





Estrella Village / RIO

51st Ave / Broadway Rd

Overall Score - 120 out of 300

Proposed



Create a Network of Vibrant Cores, Centers and Corridors 10 / 42

Scale & Intensity	<input type="radio"/>
Land Use Mix	<input type="radio"/>
Housing Mix	<input type="radio"/>

Connect People and Places 50 / 109

Transportation	<input type="radio"/>
Connectivity	<input checked="" type="radio"/>

Strengthen Our Local Economy 31 / 70

Employment	<input type="radio"/>
Education & Training	<input type="radio"/>
Arts & Culture	<input type="radio"/>

Celebrate Our Diverse Communities & Neighborhoods 14 / 47

Parks, Recreation & Open Space	<input type="radio"/>
Growth Projections	<input type="radio"/>
Safety & Livability	<input type="radio"/>

Build the Most Sustainable Desert City 15 / 32

Infrastructure	<input checked="" type="radio"/>
Environmental Health	<input type="radio"/>
Heat Resiliency & Shade	<input type="radio"/>



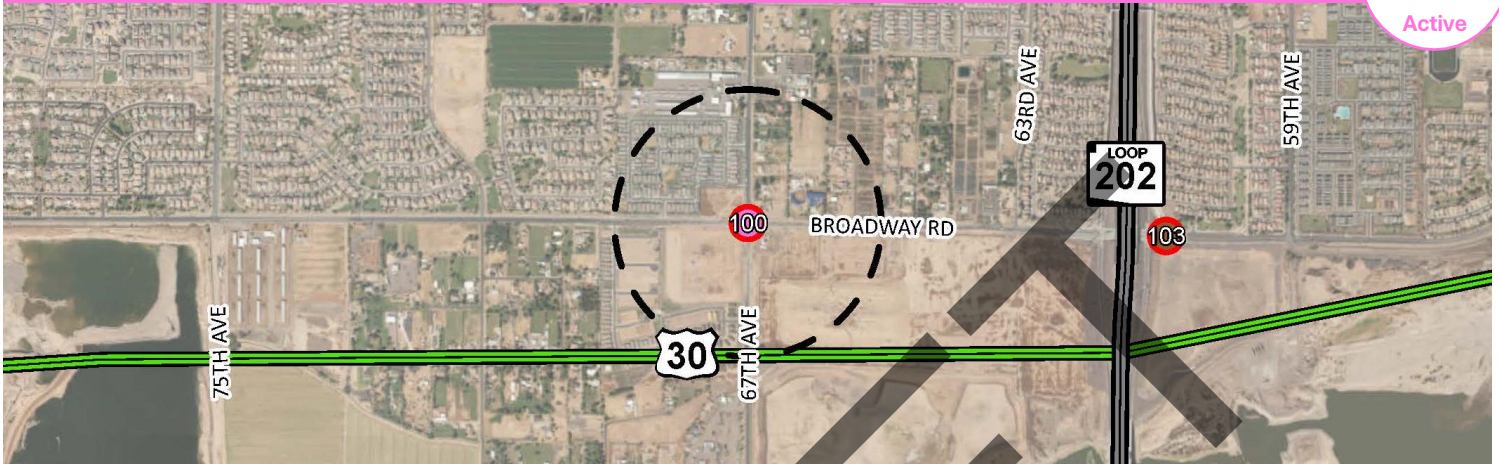


Estrella Village / RIO

67th Ave / Broadway Rd

Overall Score - 100 out of 300

Proposed



Create a Network of Vibrant Cores, Centers and Corridors 9 / 42

Scale & Intensity	<input type="radio"/>
Land Use Mix	<input type="radio"/>
Housing Mix	<input type="radio"/>

Connect People and Places 37 / 109

Transportation	<input type="radio"/>
Connectivity	<input type="radio"/>

Strengthen Our Local Economy 19 / 70

Employment	<input type="radio"/>
Education & Training	<input type="radio"/>
Arts & Culture	<input type="radio"/>

Celebrate Our Diverse Communities & Neighborhoods 14 / 47

Parks, Recreation & Open Space	<input type="radio"/>
Growth Projections	<input type="radio"/>
Safety & Livability	<input type="radio"/>

Build the Most Sustainable Desert City 21 / 32

Infrastructure	<input type="radio"/>
Environmental Health	<input type="radio"/>
Heat Resiliency & Shade	<input type="radio"/>



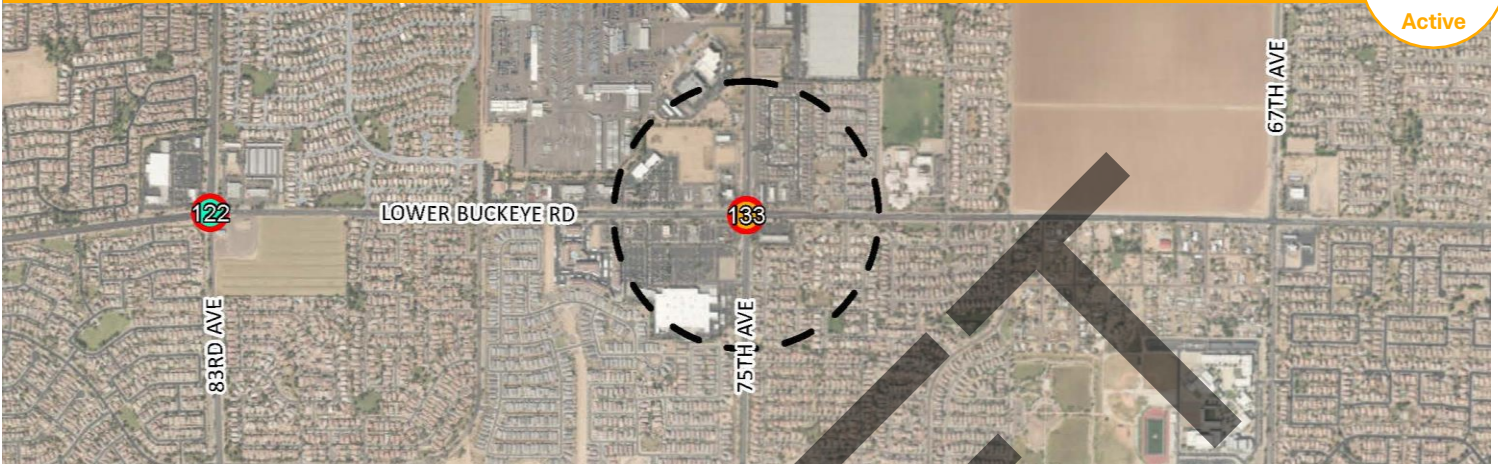


Estrella Village

75th Ave / Lower Buckeye Rd

Overall Score - 133 out of 300

Proposed



Create a Network of Vibrant Cores, Centers and Corridors 13 / 42

Scale & Intensity	<input type="radio"/>
Land Use Mix	<input type="radio"/>
Housing Mix	<input type="radio"/>

Connect People and Places 45 / 109

Transportation	<input type="radio"/>
Connectivity	<input type="radio"/>

Strengthen Our Local Economy 32 / 70

Employment	<input type="radio"/>
Education & Training	<input type="radio"/>
Arts & Culture	<input type="radio"/>

Celebrate Our Diverse Communities & Neighborhoods 22 / 47

Parks, Recreation & Open Space	<input type="radio"/>
Growth Projections	<input type="radio"/>
Safety & Livability	<input type="radio"/>

Build the Most Sustainable Desert City 21 / 32

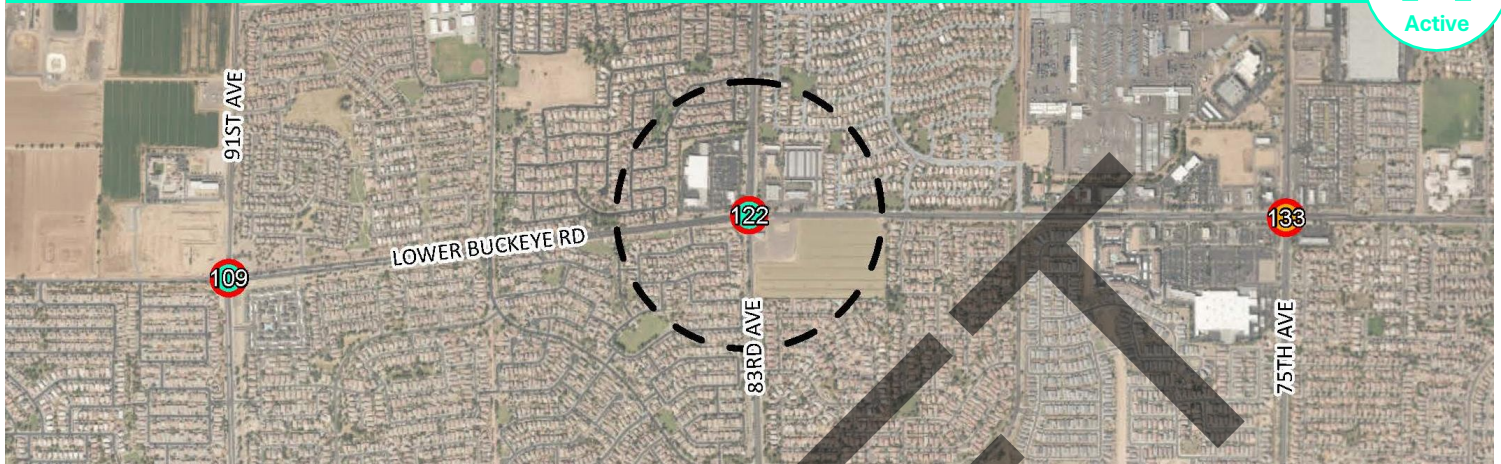
Infrastructure	<input type="radio"/>
Environmental Health	<input type="radio"/>
Heat Resiliency & Shade	<input type="radio"/>



Estrella Village 83rd Ave / Lower Buckeye Rd

Overall Score - 122 out of 300

Proposed



Create a Network of Vibrant Cores, Centers and Corridors 13 / 42

Scale & Intensity	<input type="radio"/>
Land Use Mix	<input type="radio"/>
Housing Mix	<input type="radio"/>

Connect People and Places 45 / 109

Transportation	<input type="radio"/>
Connectivity	<input type="radio"/>

Celebrate Our Diverse Communities & Neighborhoods 19 / 47

Parks, Recreation & Open Space	<input type="radio"/>
Growth Projections	<input type="radio"/>
Safety & Livability	<input type="radio"/>

Strengthen Our Local Economy 24 / 70

Employment	<input type="radio"/>
Education & Training	<input type="radio"/>
Arts & Culture	<input type="radio"/>

Build the Most Sustainable Desert City 21 / 32

Infrastructure	<input type="radio"/>
Environmental Health	<input type="radio"/>
Heat Resiliency & Shade	<input type="radio"/>





Estrella Village / RIO 83rd Ave / Rio

Overall Score - 75 out of 300

Proposed



Create a Network of Vibrant Cores, Centers and Corridors 7 / 42

Scale & Intensity	<input type="radio"/>
Land Use Mix	<input type="radio"/>
Housing Mix	<input type="radio"/>

Connect People and Places 34 / 109

Transportation	<input type="radio"/>
Connectivity	<input checked="" type="radio"/>

Strengthen Our Local Economy 14 / 70

Employment	<input type="radio"/>
Education & Training	<input type="radio"/>
Arts & Culture	<input type="radio"/>

Celebrate Our Diverse Communities & Neighborhoods 16 / 47

Parks, Recreation & Open Space	<input type="radio"/>
Growth Projections	<input checked="" type="radio"/>
Safety & Livability	<input checked="" type="radio"/>

Build the Most Sustainable Desert City 4 / 32

Infrastructure	<input type="radio"/>
Environmental Health	<input type="radio"/>
Heat Resiliency & Shade	<input type="radio"/>



Estrella Village 83rd Ave / Van Buren St

Overall Score - 110 out of 300

Proposed



Create a Network of Vibrant Cores, Centers and Corridors

7 / 42

Scale & Intensity



Land Use Mix



Housing Mix



Connect People and Places

47 / 109

Transportation



Connectivity



Strengthen Our Local Economy

26 / 70

Employment



Education & Training



Arts & Culture



Celebrate Our Diverse Communities & Neighborhoods

16 / 47

Parks, Recreation & Open Space



Growth Projections



Safety & Livability



Build the Most Sustainable Desert City

14 / 32

Infrastructure



Environmental Health



Heat Resiliency & Shade





Estrella Village / RIO

91st Ave / Broadway Rd

Overall Score - 91 out of 300

Proposed



Create a Network of Vibrant Cores, Centers and Corridors 10 / 42

Scale & Intensity	<input type="radio"/>
Land Use Mix	<input type="radio"/>
Housing Mix	<input type="radio"/>

Connect People and Places 37 / 109

Transportation	<input type="radio"/>
Connectivity	<input type="radio"/>

Strengthen Our Local Economy 15 / 70

Employment	<input type="radio"/>
Education & Training	<input type="radio"/>
Arts & Culture	<input type="radio"/>

Celebrate Our Diverse Communities & Neighborhoods 14 / 47

Parks, Recreation & Open Space	<input type="radio"/>
Growth Projections	<input type="radio"/>
Safety & Livability	<input type="radio"/>

Build the Most Sustainable Desert City 15 / 32

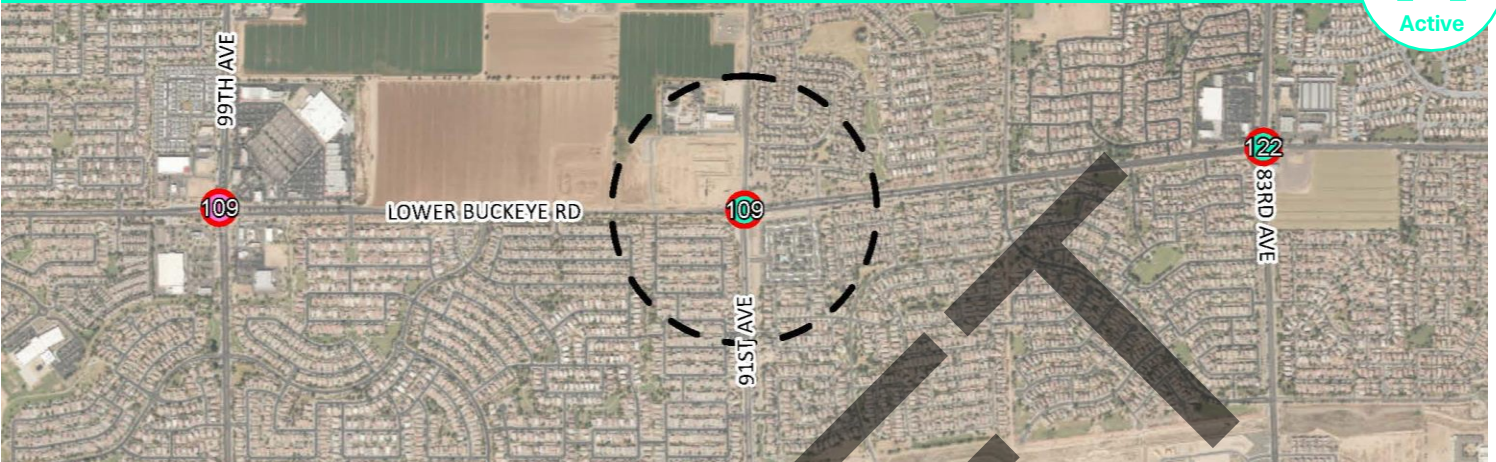
Infrastructure	<input type="radio"/>
Environmental Health	<input type="radio"/>
Heat Resiliency & Shade	<input type="radio"/>



Estrella Village 91st Ave / Lower Buckeye Rd

Overall Score - 109 out of 300

Proposed



Create a Network of Vibrant Cores, Centers and Corridors 13 / 42

Scale & Intensity	<input type="radio"/>
Land Use Mix	<input checked="" type="radio"/>
Housing Mix	<input type="radio"/>

Connect People and Places 42 / 109

Transportation	<input type="radio"/>
Connectivity	<input checked="" type="radio"/>

Celebrate Our Diverse Communities & Neighborhoods 15 / 47

Parks, Recreation & Open Space	<input type="radio"/>
Growth Projections	<input checked="" type="radio"/>
Safety & Livability	<input checked="" type="radio"/>

Strengthen Our Local Economy 20 / 70

Employment	<input type="radio"/>
Education & Training	<input type="radio"/>
Arts & Culture	<input type="radio"/>

Build the Most Sustainable Desert City 19 / 32

Infrastructure	<input checked="" type="radio"/>
Environmental Health	<input type="radio"/>
Heat Resiliency & Shade	<input checked="" type="radio"/>

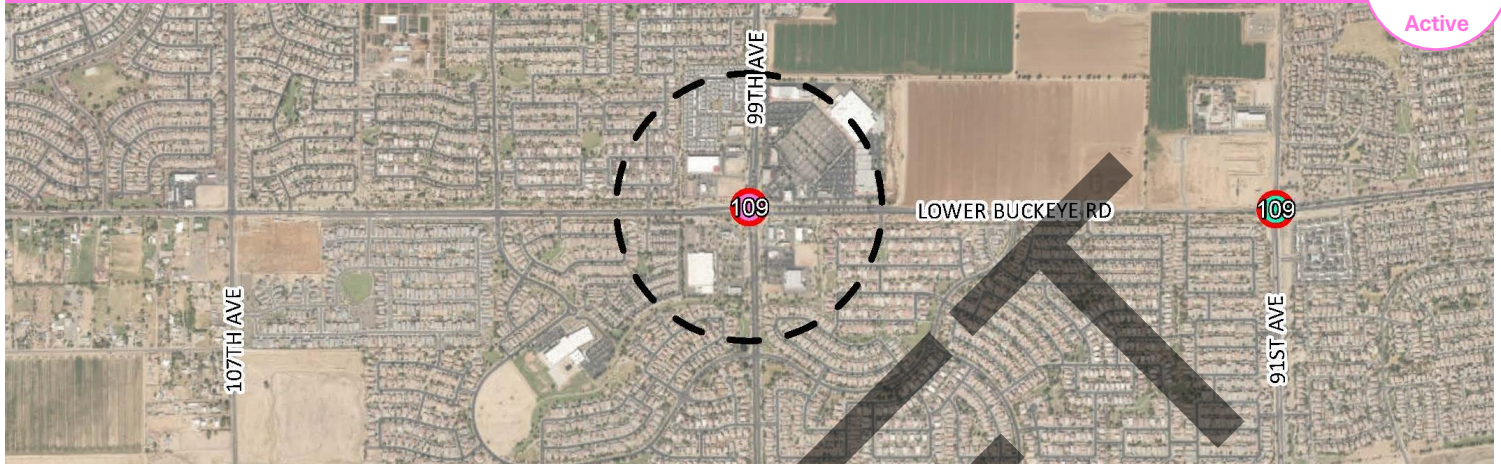




Estrella Village 99th Ave / Lower Buckeye Rd

Overall Score - 109 out of 300

Proposed



Create a Network of Vibrant Cores, Centers and Corridors 14 / 42

Scale & Intensity

Land Use Mix

Housing Mix

Connect People and Places 43 / 109

Transportation

Connectivity

Strengthen Our Local Economy 21 / 70

Employment

Education & Training

Arts & Culture

Celebrate Our Diverse Communities & Neighborhoods 13 / 47

Parks, Recreation & Open Space

Growth Projections

Safety & Livability

Build the Most Sustainable Desert City 18 / 32

Infrastructure

Environmental Health

Heat Resiliency & Shade



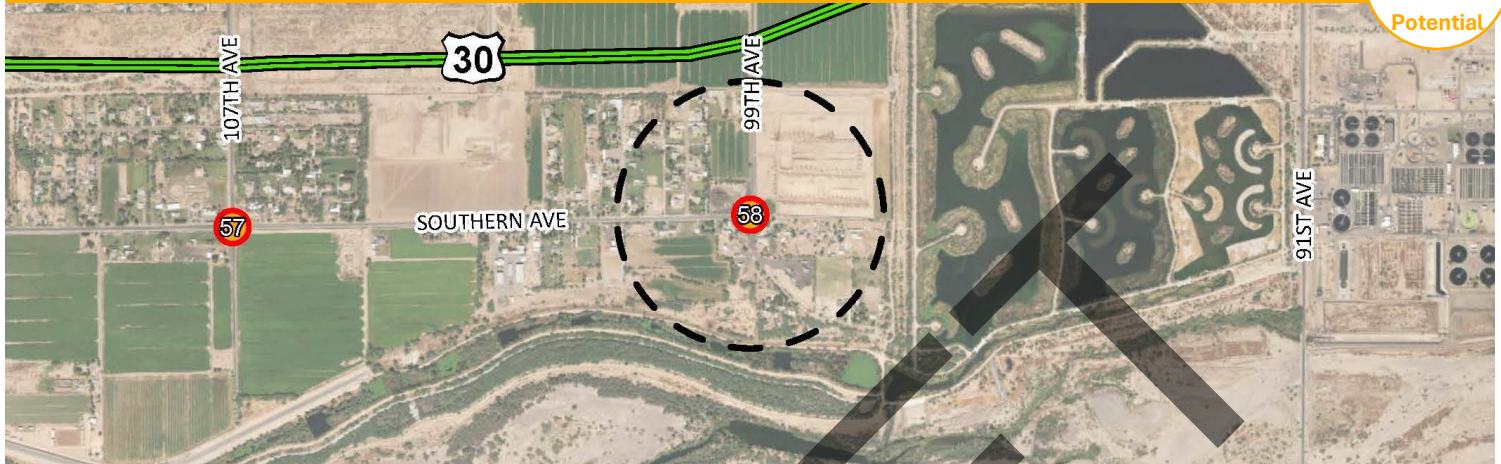


Estrella Village / RIO

99th Ave / Southern Ave

Overall Score - 58 out of 300

Proposed



Create a Network of Vibrant Cores, Centers and Corridors 0 / 42

Scale & Intensity	<input type="radio"/>
Land Use Mix	<input type="radio"/>
Housing Mix	<input type="radio"/>

Connect People and Places 29 / 109

Transportation	<input type="radio"/>
Connectivity	<input type="radio"/>

Strengthen Our Local Economy 9 / 70

Employment	<input type="radio"/>
Education & Training	<input type="radio"/>
Arts & Culture	<input type="radio"/>

Celebrate Our Diverse Communities & Neighborhoods 13 / 47

Parks, Recreation & Open Space	<input type="radio"/>
Growth Projections	<input checked="" type="radio"/>
Safety & Livability	<input type="radio"/>

Build the Most Sustainable Desert City 7 / 32

Infrastructure	<input type="radio"/>
Environmental Health	<input type="radio"/>
Heat Resiliency & Shade	<input type="radio"/>



Estrella Village I-17 / Van Buren St

Overall Score - 183 out of 300

Proposed



Create a Network of Vibrant Cores, Centers and Corridors 19 / 42

Scale & Intensity	●
Land Use Mix	●
Housing Mix	●

Connect People and Places 70 / 109

Transportation	●
Connectivity	●

Celebrate Our Diverse Communities & Neighborhoods 26 / 47

Parks, Recreation & Open Space	●
Growth Projections	●
Safety & Livability	●

Strengthen Our Local Economy 43 / 70

Employment	●
Education & Training	●
Arts & Culture	●

Build the Most Sustainable Desert City 25 / 32

Infrastructure	●
Environmental Health	●
Heat Resiliency & Shade	●





Estrella Village Loop-202 / Broadway Rd

Overall Score - 103 out of 300

Proposed



Create a Network of Vibrant Cores, Centers and Corridors **12 / 42**

Scale & Intensity	<input type="radio"/>
Land Use Mix	<input type="radio"/>
Housing Mix	<input type="radio"/>

Connect People and Places **41 / 109**

Transportation	<input type="radio"/>
Connectivity	<input checked="" type="radio"/>

Strengthen Our Local Economy **19 / 70**

Employment	<input type="radio"/>
Education & Training	<input type="radio"/>
Arts & Culture	<input type="radio"/>

Celebrate Our Diverse Communities & Neighborhoods **14 / 47**

Parks, Recreation & Open Space	<input type="radio"/>
Growth Projections	<input type="radio"/>
Safety & Livability	<input type="radio"/>

Build the Most Sustainable Desert City **17 / 32**

Infrastructure	<input checked="" type="radio"/>
Environmental Health	<input type="radio"/>
Heat Resiliency & Shade	<input checked="" type="radio"/>





Estrella Village Loop-202 / Lower Buckeye Rd (Primary Core)

Overall Score - 115 out of 300

Proposed



Create a Network of Vibrant Cores, Centers and Corridors 6 / 42

Scale & Intensity	<input type="radio"/>
Land Use Mix	<input type="radio"/>
Housing Mix	<input type="radio"/>

Connect People and Places 54 / 109

Transportation	<input type="radio"/>
Connectivity	<input checked="" type="radio"/>

Celebrate Our Diverse Communities & Neighborhoods 15 / 47

Parks, Recreation & Open Space	<input type="radio"/>
Growth Projections	<input type="radio"/>
Safety & Livability	<input type="radio"/>

Strengthen Our Local Economy 23 / 70

Employment	<input type="radio"/>
Education & Training	<input type="radio"/>
Arts & Culture	<input type="radio"/>

Build the Most Sustainable Desert City 17 / 32

Infrastructure	<input checked="" type="radio"/>
Environmental Health	<input type="radio"/>
Heat Resiliency & Shade	<input type="radio"/>





Estrella Village Loop-202 / Van Buren St

Overall Score - 139 out of 300

Proposed



Create a Network of Vibrant Cores, Centers and Corridors 12 / 42

Scale & Intensity

Land Use Mix

Housing Mix

Connect People and Places 55 / 109

Transportation

Connectivity

Strengthen Our Local Economy 26 / 70

Employment

Education & Training

Arts & Culture

Celebrate Our Diverse Communities & Neighborhoods 25 / 47

Parks, Recreation & Open Space

Growth Projections

Safety & Livability

Build the Most Sustainable Desert City 21 / 32

Infrastructure

Environmental Health

Heat Resiliency & Shade

