

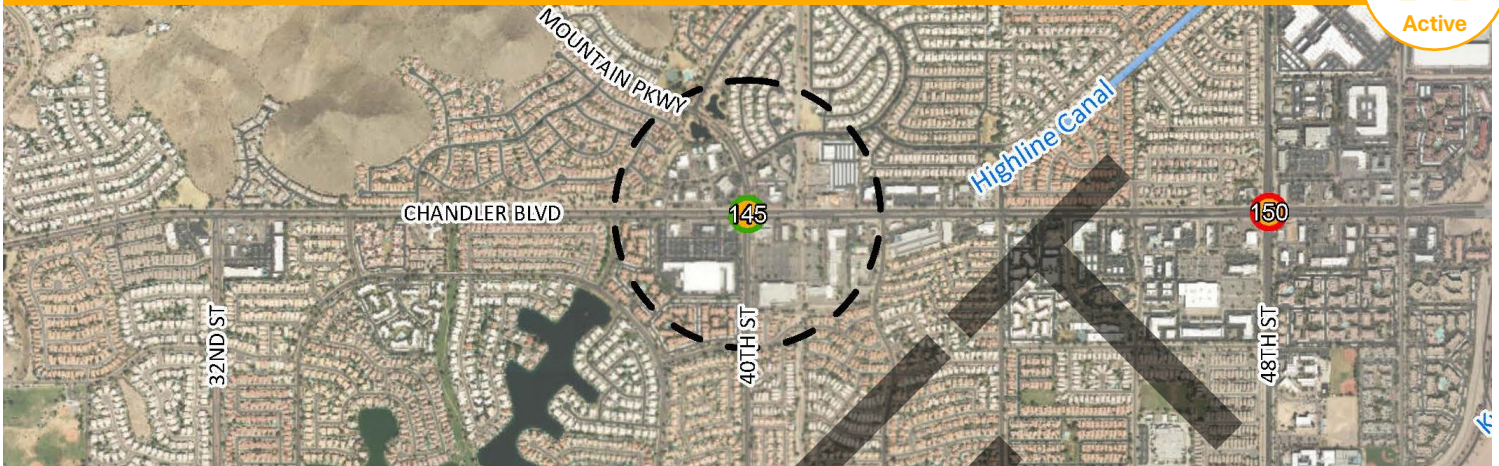


Ahwatukee Foothills Village

40th St / Chandler Blvd

Overall Score - 145 out of 300

Proposed



Create a Network of Vibrant Cores, Centers and Corridors 15 / 42

Scale & Intensity	<input type="radio"/>
Land Use Mix	<input type="radio"/>
Housing Mix	<input type="radio"/>

Connect People and Places 48 / 109

Transportation	<input type="radio"/>
Connectivity	<input checked="" type="radio"/>

Strengthen Our Local Economy 37 / 70

Employment	<input type="radio"/>
Education & Training	<input type="radio"/>
Arts & Culture	<input checked="" type="radio"/>

Celebrate Our Diverse Communities & Neighborhoods 27 / 47

Parks, Recreation & Open Space	<input type="radio"/>
Growth Projections	<input type="radio"/>
Safety & Livability	<input checked="" type="radio"/>

Build the Most Sustainable Desert City 18 / 32

Infrastructure	<input type="radio"/>
Environmental Health	<input type="radio"/>
Heat Resiliency & Shade	<input checked="" type="radio"/>



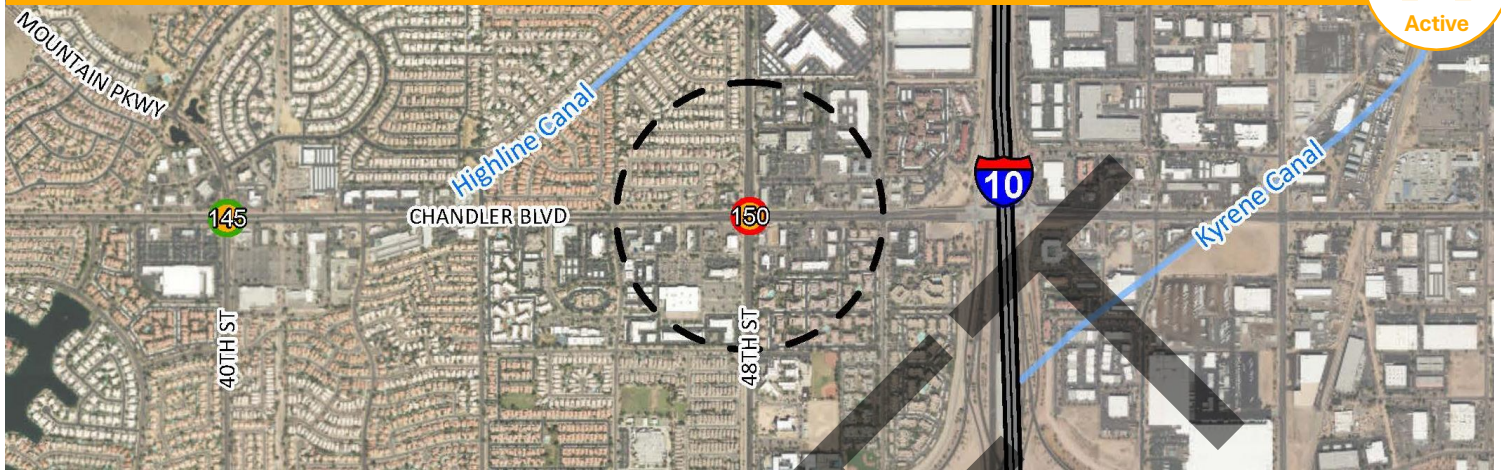


Ahwatukee Foothills Village

48th St / Chandler Blvd

Overall Score - 150 out of 300

Proposed



Create a Network of Vibrant Cores, Centers and Corridors 16 / 42

Scale & Intensity	<input type="radio"/>
Land Use Mix	<input type="radio"/>
Housing Mix	<input type="radio"/>

Connect People and Places 51 / 109

Transportation	<input type="radio"/>
Connectivity	<input checked="" type="radio"/>

Strengthen Our Local Economy 33 / 70

Employment	<input type="radio"/>
Education & Training	<input type="radio"/>
Arts & Culture	<input checked="" type="radio"/>

Celebrate Our Diverse Communities & Neighborhoods 28 / 47

Parks, Recreation & Open Space	<input type="radio"/>
Growth Projections	<input type="radio"/>
Safety & Livability	<input checked="" type="radio"/>

Build the Most Sustainable Desert City 22 / 32

Infrastructure	<input checked="" type="radio"/>
Environmental Health	<input type="radio"/>
Heat Resiliency & Shade	<input checked="" type="radio"/>



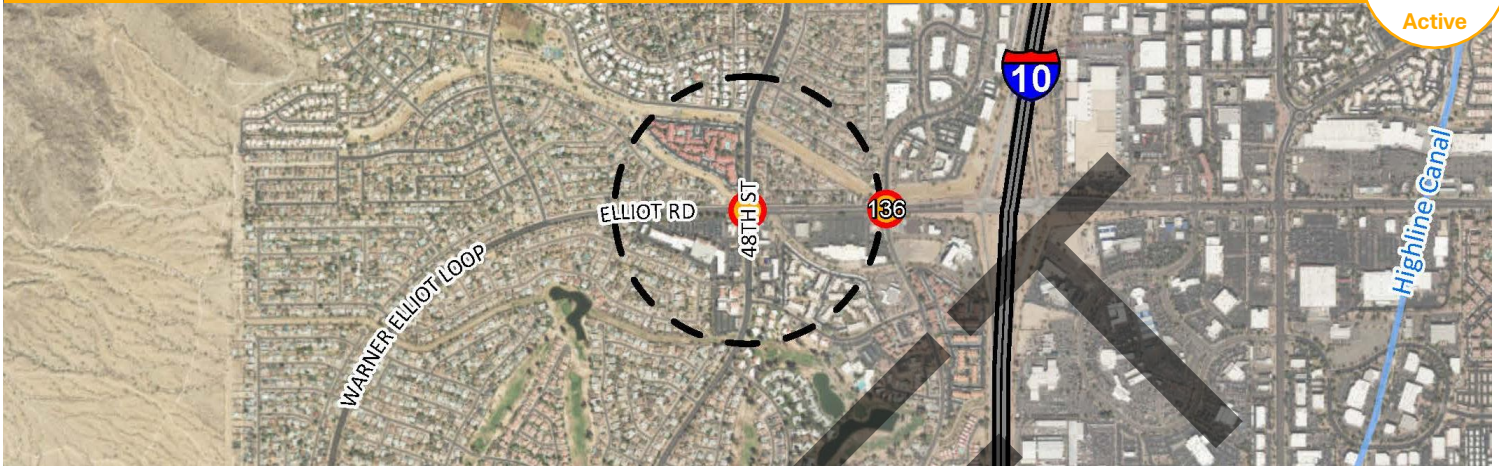


Ahwatukee Foothills Village

48th St / Elliot Rd

Overall Score - 135 out of 300

Proposed



Create a Network of Vibrant Cores, Centers and Corridors 13 / 42

Scale & Intensity	<input type="radio"/>
Land Use Mix	<input type="radio"/>
Housing Mix	<input type="radio"/>

Connect People and Places 46 / 109

Transportation	<input type="radio"/>
Connectivity	<input type="radio"/>

Strengthen Our Local Economy 27 / 70

Employment	<input type="radio"/>
Education & Training	<input type="radio"/>
Arts & Culture	<input type="radio"/>

Celebrate Our Diverse Communities & Neighborhoods 29 / 47

Parks, Recreation & Open Space	<input type="radio"/>
Growth Projections	<input type="radio"/>
Safety & Livability	<input type="radio"/>

Build the Most Sustainable Desert City 20 / 32

Infrastructure	<input type="radio"/>
Environmental Health	<input type="radio"/>
Heat Resiliency & Shade	<input type="radio"/>

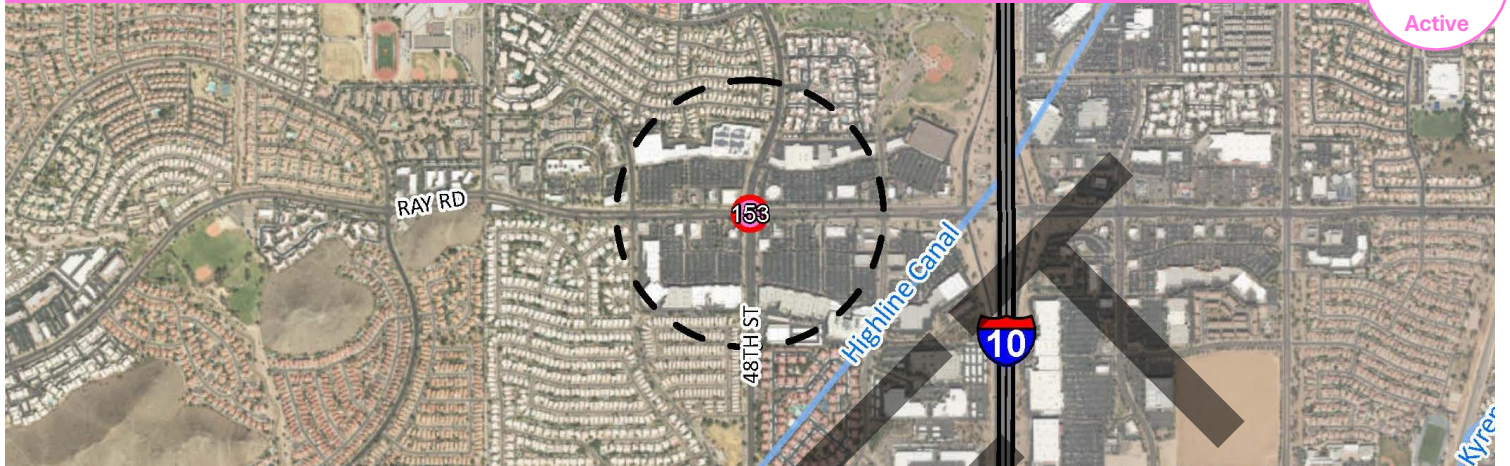




Ahwatukee Foothills Village

48th St / Ray Rd (Primary Core)

Overall Score - 153 out of 300 Proposed



Create a Network of Vibrant Cores, Centers and Corridors 20 / 42

Scale & Intensity	<input type="radio"/>
Land Use Mix	<input type="radio"/>
Housing Mix	<input type="radio"/>

Connect People and Places 53 / 109

Transportation	<input type="radio"/>
Connectivity	<input checked="" type="radio"/>

Strengthen Our Local Economy 33 / 70

Employment	<input type="radio"/>
Education & Training	<input type="radio"/>
Arts & Culture	<input checked="" type="radio"/>

Celebrate Our Diverse Communities & Neighborhoods 25 / 47

Parks, Recreation & Open Space	<input type="radio"/>
Growth Projections	<input type="radio"/>
Safety & Livability	<input type="radio"/>

Build the Most Sustainable Desert City 22 / 32

Infrastructure	<input checked="" type="radio"/>
Environmental Health	<input type="radio"/>
Heat Resiliency & Shade	<input checked="" type="radio"/>

High Medium Low

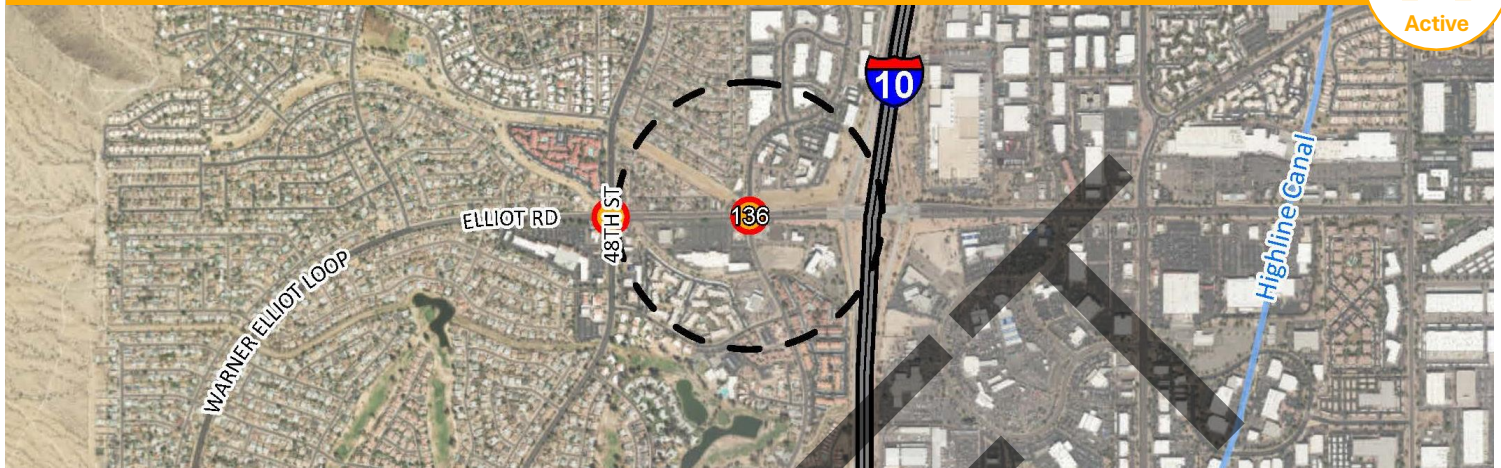


Ahwatukee Foothills Village

51st St / Elliot Rd

Overall Score - 136 out of 300

Proposed



Create a Network of Vibrant Cores, Centers and Corridors 14 / 42

- Scale & Intensity
- Land Use Mix
- Housing Mix

Connect People and Places 49 / 109

- Transportation
- Connectivity

Strengthen Our Local Economy 27 / 70

- Employment
- Education & Training
- Arts & Culture

Celebrate Our Diverse Communities & Neighborhoods 27 / 47

- Parks, Recreation & Open Space
- Growth Projections
- Safety & Livability

Build the Most Sustainable Desert City 19 / 32

- Infrastructure
- Environmental Health
- Heat Resiliency & Shade

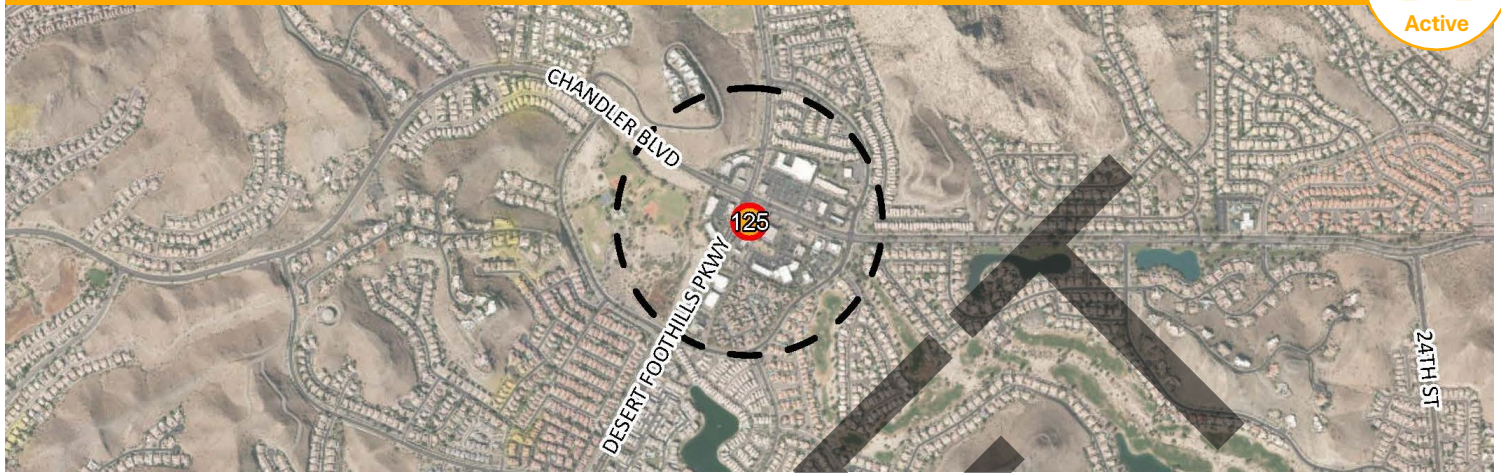




Ahwatukee Foothills Village Desert Foothills Pkwy / Chandler Blvd

Overall Score - 125 out of 300

Deleted



Create a Network of Vibrant Cores, Centers and Corridors 15 / 42

Scale & Intensity	<input type="radio"/>
Land Use Mix	<input type="radio"/>
Housing Mix	<input type="radio"/>

Connect People and Places 42 / 109

Transportation	<input type="radio"/>
Connectivity	<input type="radio"/>

Strengthen Our Local Economy 21 / 70

Employment	<input type="radio"/>
Education & Training	<input type="radio"/>
Arts & Culture	<input type="radio"/>

Celebrate Our Diverse Communities & Neighborhoods 28 / 47

Parks, Recreation & Open Space	<input type="radio"/>
Growth Projections	<input type="radio"/>
Safety & Livability	<input type="radio"/>

Build the Most Sustainable Desert City 19 / 32

Infrastructure	<input type="radio"/>
Environmental Health	<input type="radio"/>
Heat Resiliency & Shade	<input type="radio"/>

