

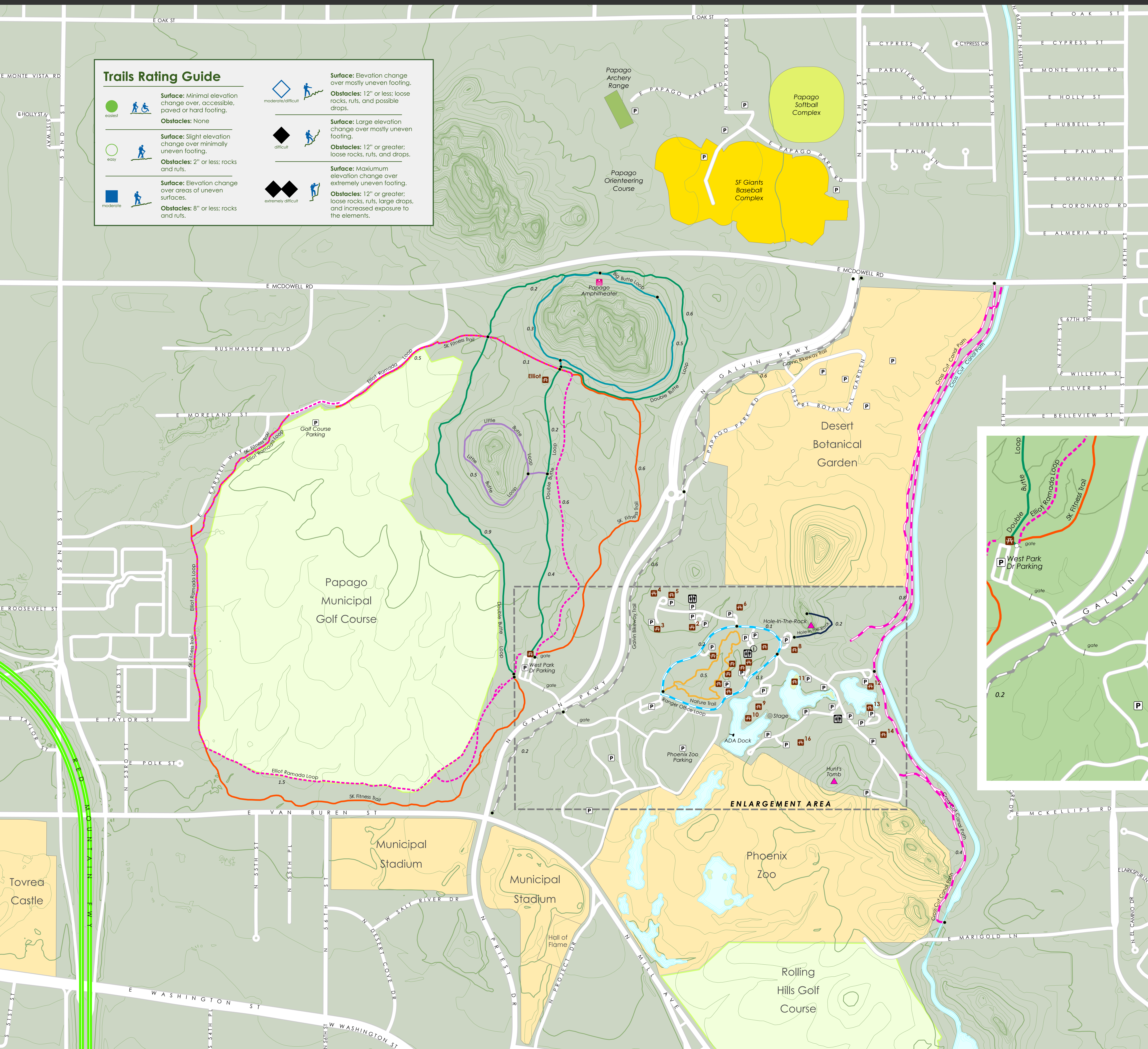
Trails Rating Guide

	Surface: Minimal elevation change over, accessible, paved or hard footing. Obstacles: None		Surface: Large elevation change over mostly uneven footing. Obstacles: 12" or greater; loose rocks, ruts, and possible drops.
	Surface: Slight elevation change over minimally uneven footing. Obstacles: 2" or less; rocks and ruts.		Surface: Maximum elevation change over extremely uneven footing. Obstacles: 12" or greater; loose rocks, ruts, large drops, and increased exposure to the elements.
	Surface: Elevation change over areas of uneven surfaces. Obstacles: 8" or less; rocks and ruts.		

Trails & Facilities Legend

- Amphitheater
- Info
- Parking
- Point of Interest
- Ramada
- Restrooms
- Stage

trail name	miles	difficulty	surface type
Big Butte Loop	0.8 mi		native dirt
Double Butte Loop	2.3 mi		native dirt
Hole-in-the-Rock	0.2 mi		native dirt
Little Butte Loop	0.5 mi		native dirt, step
Nature Trail	0.5 mi		gravel
5K Fitness Trail	3.1 mi		native dirt, paved
Elliot Ramada Loop	2.7 mi		native dirt, paved
Galvin Bikeway Trail	1.4 mi		concrete
Cross Cut Canal Path	1.4 mi		paved
Ranger Office Loop	0.6 mi		paved



Contact Information

Emergency: 911
 Crime Stop: 602-262-6151
 Natural Resources Division Rangers: 602-495-5458

