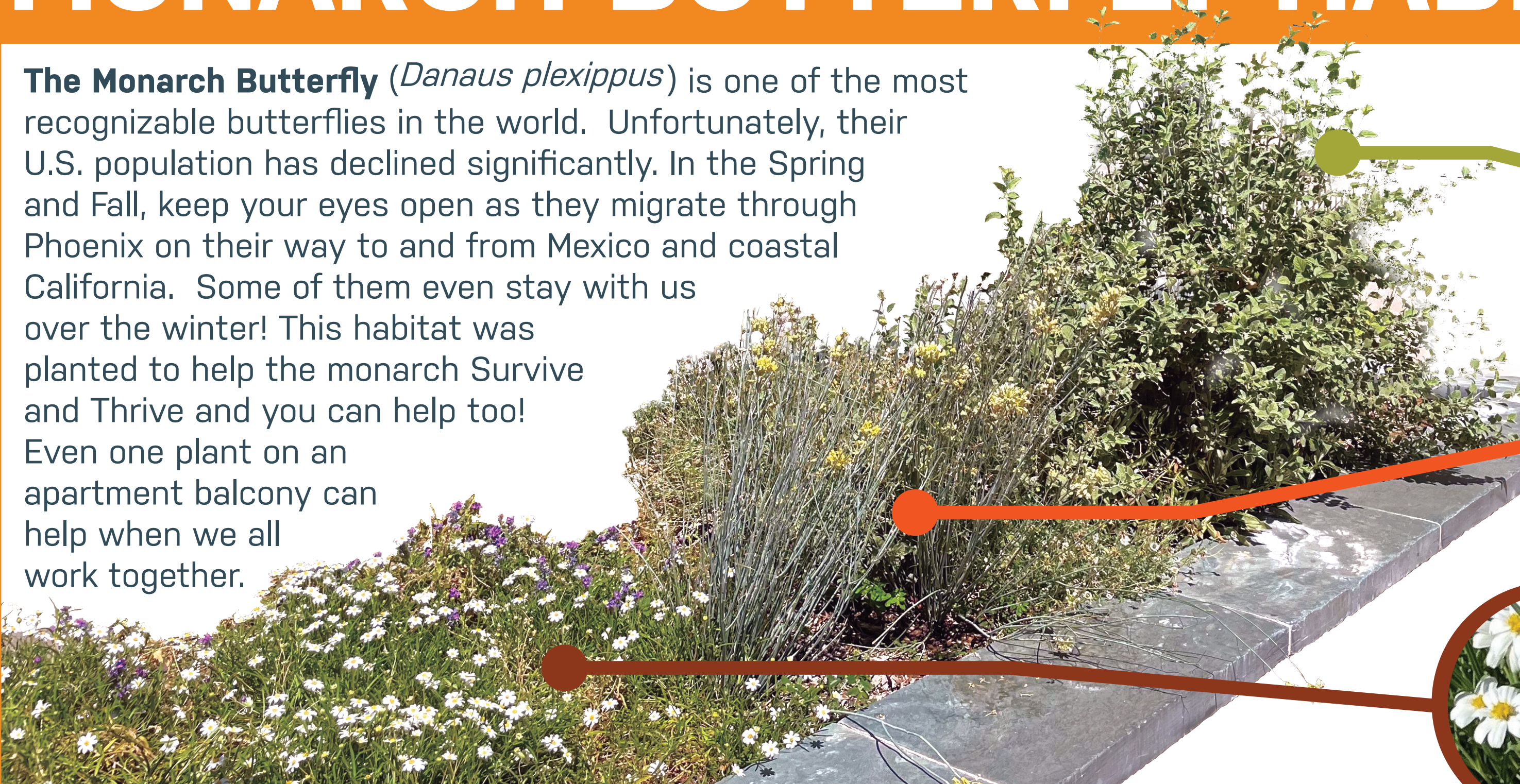




What is ...

MONARCH BUTTERFLY HABITAT?

The Monarch Butterfly (*Danaus plexippus*) is one of the most recognizable butterflies in the world. Unfortunately, their U.S. population has declined significantly. In the Spring and Fall, keep your eyes open as they migrate through Phoenix on their way to and from Mexico and coastal California. Some of them even stay with us over the winter! This habitat was planted to help the monarch **Survive and Thrive** and you can help too! Even one plant on an apartment balcony can help when we all work together.



SHELTER

Large-leaved shrubs planted crowded together provide shade from the sun and shelter at all stages of life.



FOOD

Native milkweed are the only plants that monarch caterpillars will eat! Provide plenty to help them grow.



ENERGY

Native nectar plants provide food and energy for adult butterflies to migrate and complete their life cycle.



SCAN THIS CODE!

Scan this code to learn how you can be a Pollinator Protector!

WHAT CAN YOU DO TO HELP MONARCHS?

- Plant native milkweed species including desert, pine-needle, or Arizona milkweed.
- Provide other flowering plants like blackfoot daisy, desert marigold, Superstition mallow, and penstemon.
- Protect flowers by trimming plants only when flowers are not blooming.
- Protect your garden and monarchs by avoiding the use of pesticides as much as possible. Remove weeds by hand or use a natural alternative.
- Find out more at www.phoenix.gov/oep/monarch and learn how you can help the monarch **Survive and Thrive!**



CATERPILLARS HAVE BLACK, YELLOW, AND WHITE STRIPES.



BUTTERFLIES CAN HAVE A 3.5 TO 4 INCH WINGSPAN!