



Climate Action Plan Workshops

Stationary Energy

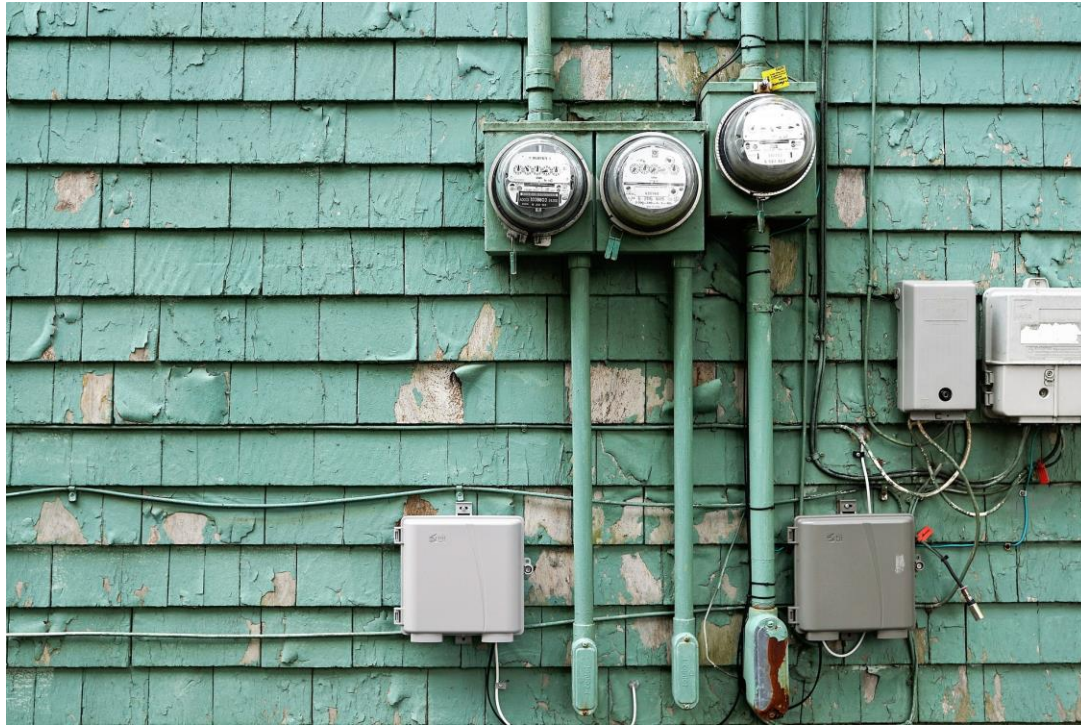
Office of Sustainability



Energy – Affordability and Sustainability

High energy burden affects health, safety, and equity. This disproportionately impacts vulnerable communities.

Renewable energy reduces greenhouse gas emissions, improving air quality and supporting equity.



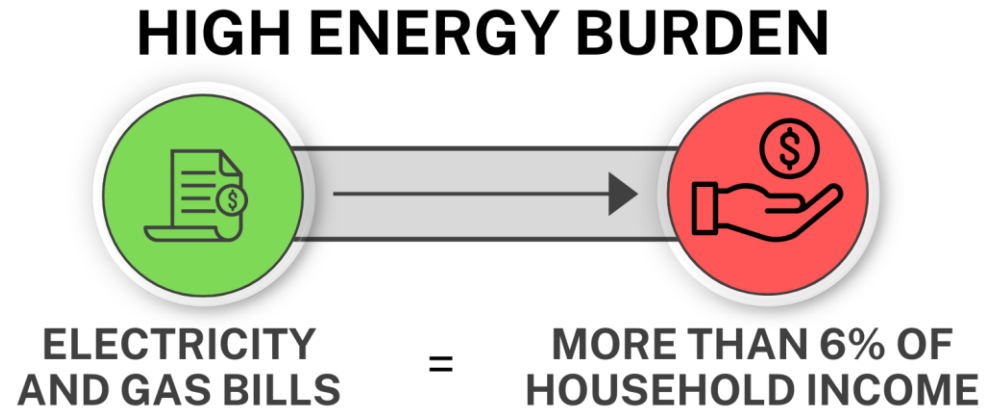
We need your input

1) What would help you most with energy costs in Phoenix, and what solutions do you think could make energy more affordable for households?

2) Are you interested in seeing more renewable energy options from the electric grid to reduce greenhouse gas emissions? What do you think is needed to make this shift happen?



Understanding Energy Burden



Total Households	Total Households Facing More Than 6% Energy Burden	
584,114	82,345	of which 96% are low-income





Energy Access Plan

Contributing to greater energy access and tackling energy poverty citywide.

Goal:

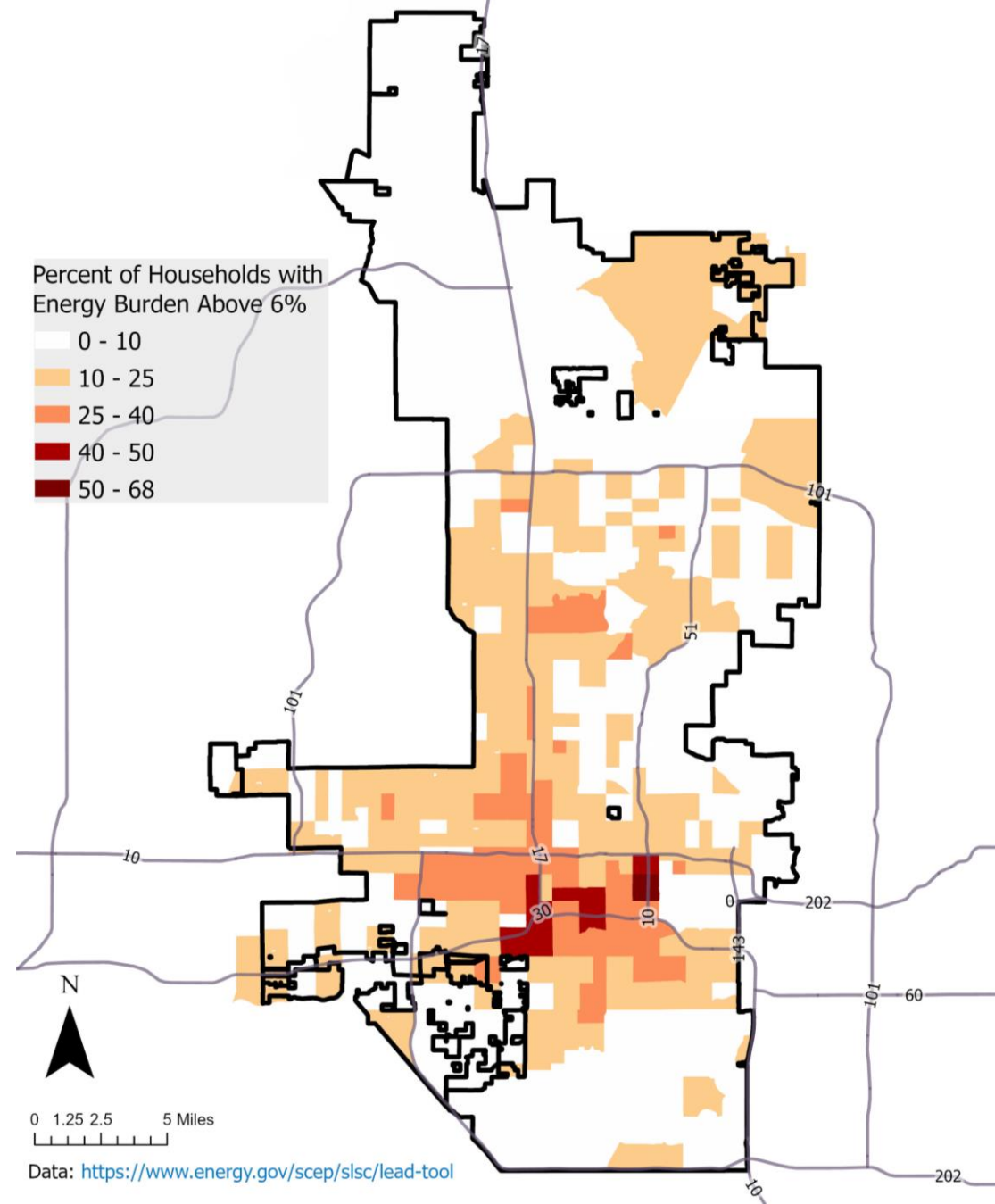
Increase household participation in low-income energy programs by **25% by 2030** to reduce energy burden across Phoenix. (*Target Adopted: January 2025*)

Next Steps:

- Host **Community Workshops** for input and collaboration.
- Finalize and **Approve the Plan**.

Energy Burden Across Phoenix

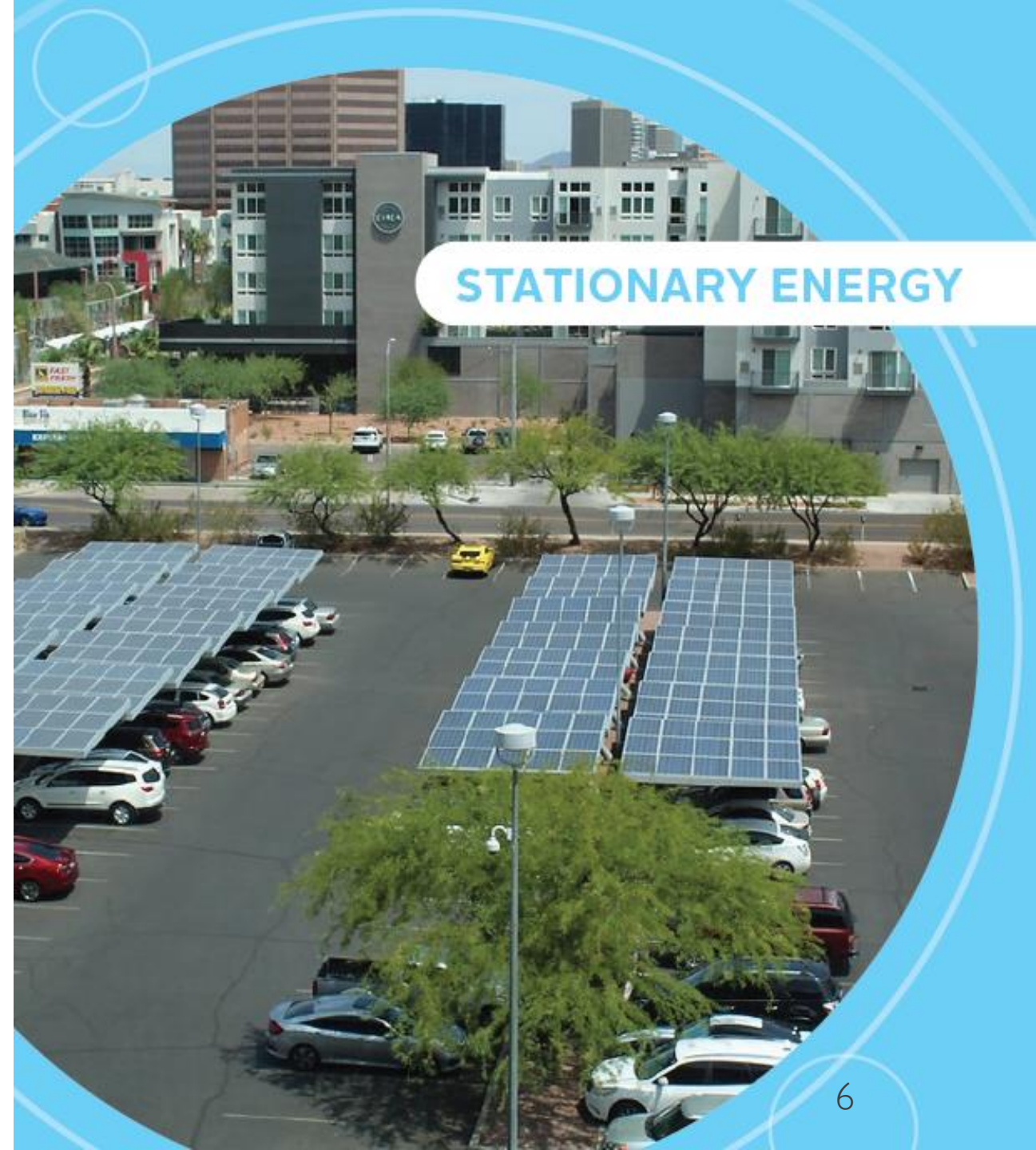
2018-2022 Data

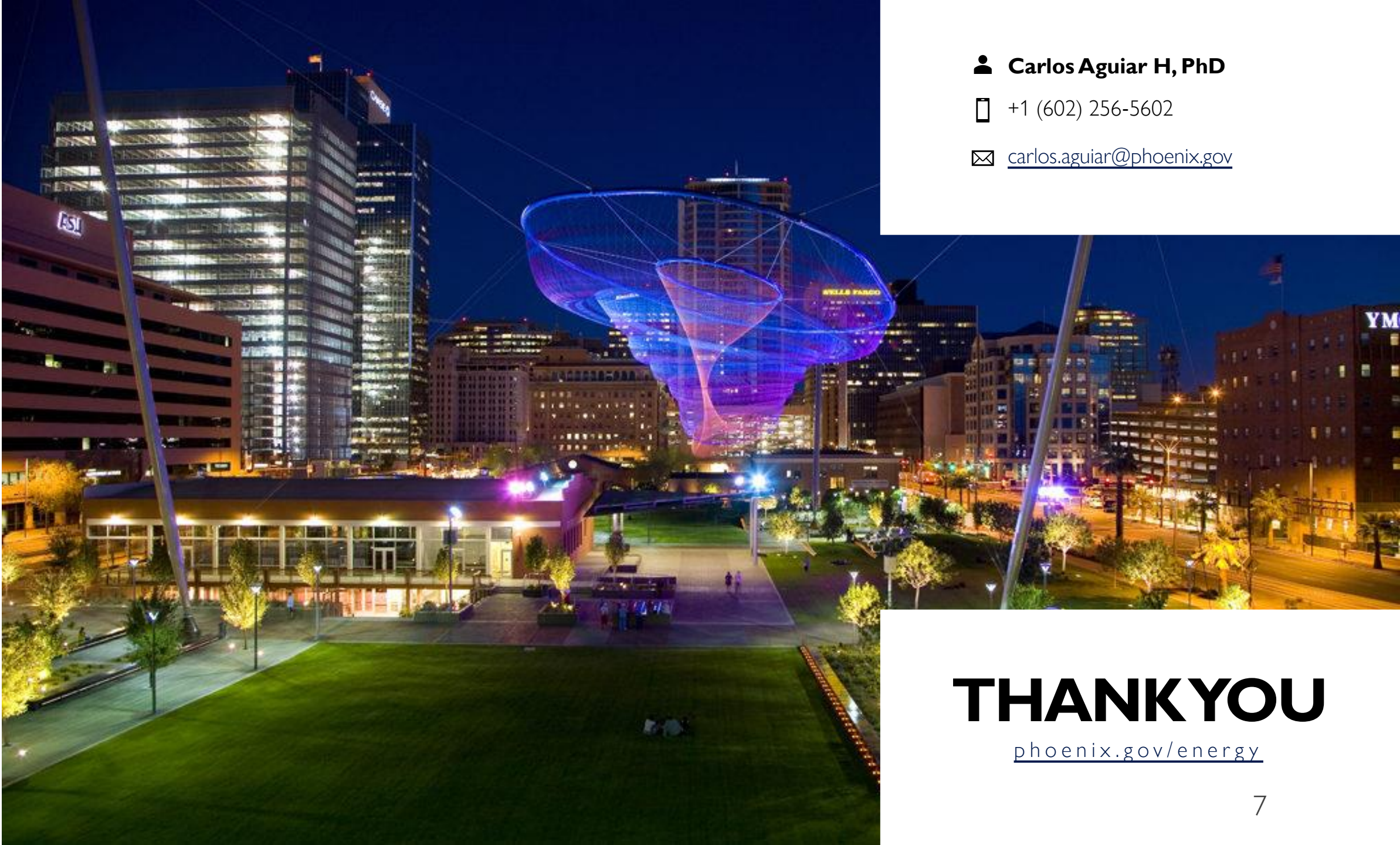


Advancing Renewable Energy for a Sustainable Future


LOWER EMISSIONS, IMPROVE RESILIENCE

- Expanding community-wide renewable energy and energy efficiency projects.
- Support policies and projects that help shape an electricity grid that is net-zero GHG emissions by 2050.
- Net-zero GHG emissions for municipal electricity by 2030.





 **Carlos Aguiar H, PhD**

 +1 (602) 256-5602

 carlos.aguiar@phoenix.gov

THANKYOU

phoenix.gov/energy

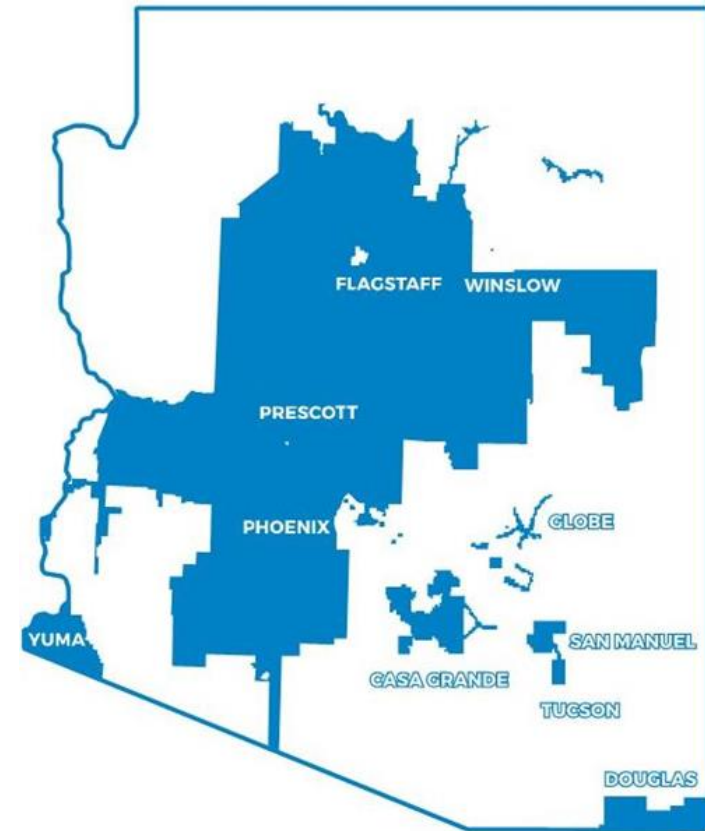
APS Initiatives for Sustainability and Energy Efficiency

Tony Perez, APS
April 2025



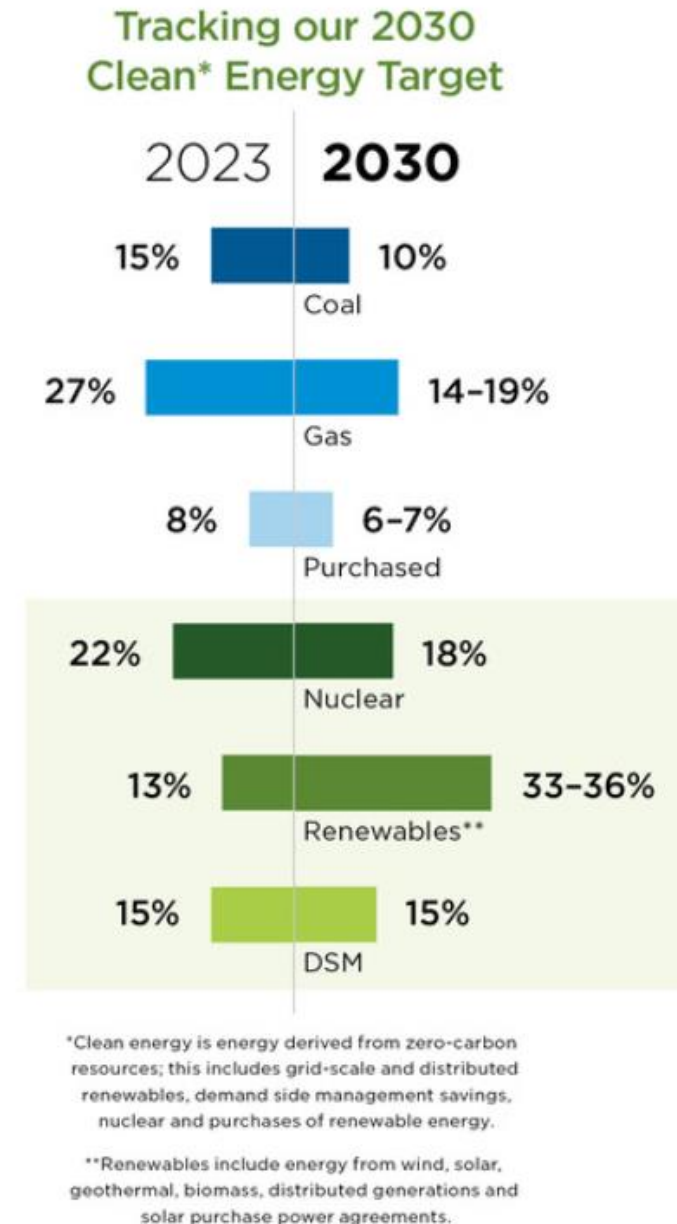
APS AT A GLANCE

- Serving Arizona since 1886
- Arizona's largest and longest-serving utility
- Investor-owned public service company
- Service territory: 34,646 square miles
- 1.4 million homes & businesses in 11 of Arizona's 15 counties
- Regulated by: Arizona Corporation Commission



COMMITTED TO A CLEAN ENERGY FUTURE

- Provide 100% clean, carbon-free electricity to customers by 2050
 - 51% clean today and growing
- Achieve a 2030 resource mix that is 65% clean energy, with 45% of our generation portfolio coming from renewable energy
- End all coal-fired generation by 2031, seven years sooner than previously projected



Green Choice Program

Customers can power their home or business with renewable energy resources

Three solutions available:

- **Block Option (Residential & Commercial)**
 - Choose the amount of renewable energy you want each month based on blocks of power (1 block = 100 kWh)
- **Percentage Option (Residential & Commercial)**
 - Select a percentage of your power that comes from renewable energy
- **Event Option (Commercial Only)**
 - “Green” event by requesting renewable energy for a venue

ENERGY AND DEMAND CUSTOMER EDUCATION

APS Marketplace

- Virtual Installation Support
- Free in-home installation for a limited time

Virtual Energy Check-Up

- Free service for residential customers to assess their home energy use
- Provides customized recommendations in real time

Home Performance with ENERGY STAR Check up

- Save on your energy bill and improve your indoor air quality
- Request a checkup for \$99 and a certified contractor will diagnose your home

HVAC Rebate Program

- \$200 rebate when you replace your old or broken AC
- Must be installed by participating contractor
- aps.com/rebates



RESIDENTIAL ENERGY EFFICIENCY PROGRAMS

Limited Income Weatherization

- Up to \$9,000 in available rebates
- Projects can include:
 - Insulation, AC equipment, tune-up, fix and repair, air duct sealing, shade screens, CO detectors for air quality and water heater timers

Tribal Communities Energy Efficiency

- Similar measures for Limited Income Weatherization
- Offering more heat pumps to replace coal or wood burning
- Window glazing

Multifamily Energy Efficiency Program (MEEP)

- APS partners with multifamily communities to make them more energy efficient. Our trained MEEP Energy Advisors and Trade Allies will work with customers to identify ways to save energy.
 - New Construction
 - Existing Residential and Common Areas
 - HVAC Quality Install



COMMERCIAL ENERGY EFFICIENCY PROGRAMS

Solutions for Business New and Existing Facilities

- Supports all businesses small or big manage their APS account and energy costs by offering:
 - Rebates, rate plans, energy saving tips, energy information services and new construction

Existing Facilities

- Provides incentives for owners and operators of non-residential facilities to promote efficiency improvements in technologies such as HVAC, HVAC controls and variable speed drive applications.
- Advanced Rooftop Control Pilot
 - Designed to help K-12 schools and select nonprofit customers manage and reduce energy use
 - Improve the indoor air quality for these facilities
 - The program offers customers enhanced incentives for:
 - High-efficiency air handling equipment
 - Carbon dioxide sensors
 - Networked energy management systems



QUESTIONS?

THANK YOU!

For more information, please contact
Tony.Perez@aps.com



Delivering water and power®

City of Phoenix Climate Action Plan ENERGY AFFORDABILITY AND ACCESSIBILITY

JOSH STEINER

System Integration Manager



Mission Statement

SRP's mission is to provide reliable, affordable and sustainable water and energy to our customers and communities to help them grow and thrive.

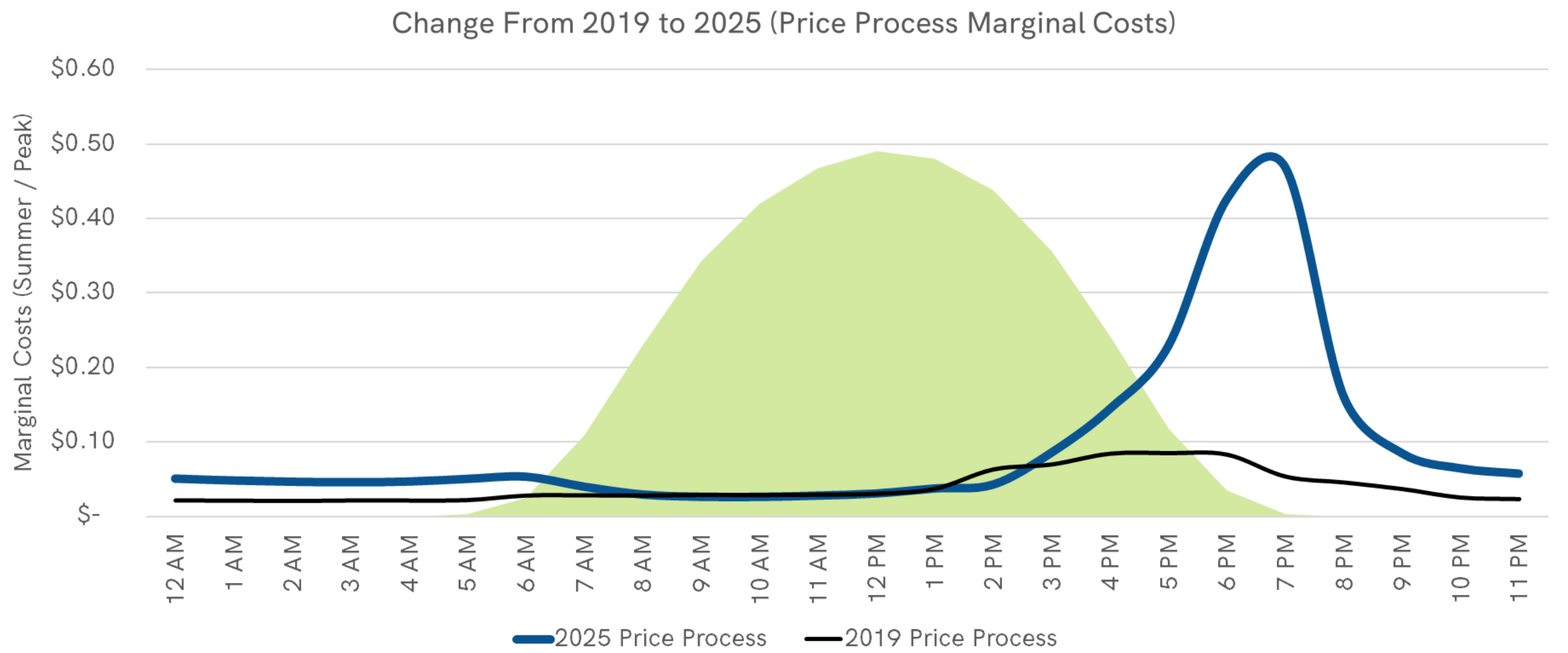


PLANNING THE POWER SYSTEM FOR THE FUTURE

SRP's **Integrated System Plan** is the holistic roadmap for the power system of the future, which considers evolving customer needs for **reliability, affordability** and **sustainability** and achieves our 2035 goals.

Maricopa is the 4th fastest growing
county in the U.S.

Energy and Time of Use



Affordability Programs

Save with SRP

- SRP Marketplace offers discounts and rebates on energy efficient products
- Rebates for home efficiency improvements
- Efficient window and window treatment rebates
- Home energy audits
- Free shade tree program

Customer Assistance

- Economy Price Plan for monthly discounts
- SRP Bill Assistance
- Weatherization Assistance Program
- Project SHARE
- Resources for assistance

Different Rate Plans

- Time of Use Rates
 - Lower prices during the day, higher in the evening
- Call to compare
- M-Power pre-pay
- Budget billing



Delivering water and power®

THANK YOU

Residential Customer Assistance

(602) 236-8888

email help@srpnet.com

Public Pricing Information

www.srp.net/srpprices

Power System
Planning Information

www.srp.net/isp