

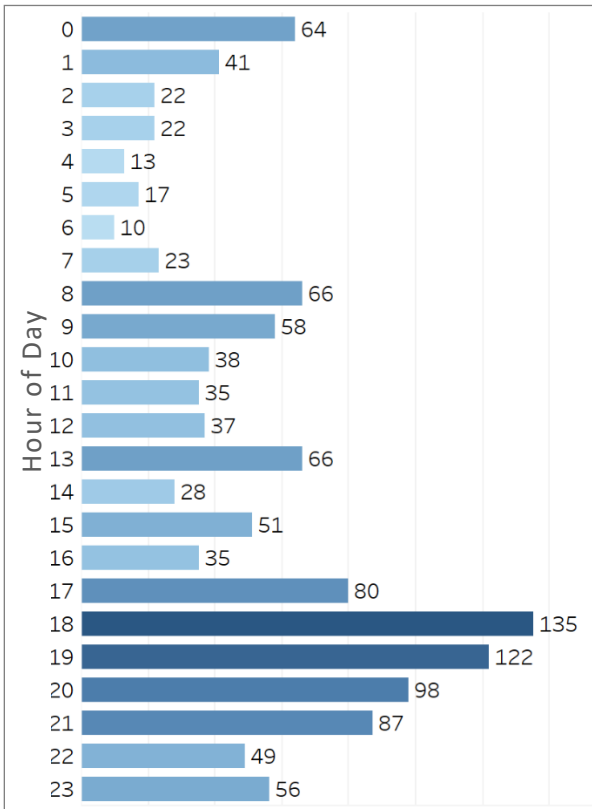
# Summer Safety Weekly Recap: 5/30/24 – 6/5/24

## Respite/Extended Hour Cooling Center Visitors: 5/30/24 – 6/5/24

### Location Count

Burton Barr - Respite	775
Senior Opportunities West - Respite	213
Cholla Library - Cooling Center	77
Harmon Library - Cooling Center	112
Yucca Library - Cooling Center	76
<b>Grand Total</b>	<b>1,253</b>

### Intake Time



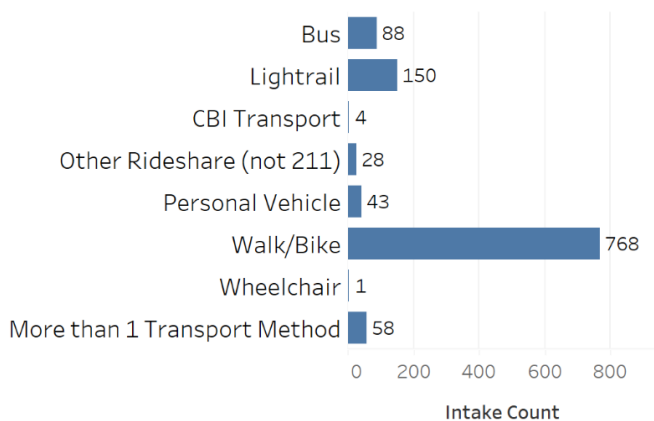
### Phoenix Summer Safety Operation Totals 5/1/24 – 6/5/24:

- **231 heat related** calls for service (Source: Phoenix FD). Of those calls, only 30 were within a mile of a cooling or respite center during extended operating hours.
- **4,160 visitors** in respite and extended hour cooling centers (based on intake forms received).
- Beginning on 5/22/24, Cholla Library suspended cooling hours due to a facility issue. Visitors have been able to receive hydration and, if they are interested, a bus pass to another cooling center.
- Overall, **6 and 7pm** have seen the highest number of people arriving.
- **Walk/Bike** (72%) has been the most popular method of getting to the cooling center.
- **Word of mouth** (35%) has been the most popular method of notification for locating the cooling centers followed by returning visitors who have used the location previously (28%).
- **3,354 visitors (81%)** indicated they are experiencing homelessness.
- **3,009 visitors (73%)** indicated they just want to get cool and don't need any additional services or referrals.
- **384 visitors** received direct onsite assistance from CBI with various shelter or homeless solutions referrals. **20 additional visitors** required additional follow up for their referral, which was submitted by the Office of Emergency Management on their behalf.
- ASU Medical Students began volunteering on 6/5, they assisted 4 visitors with health/medical services.

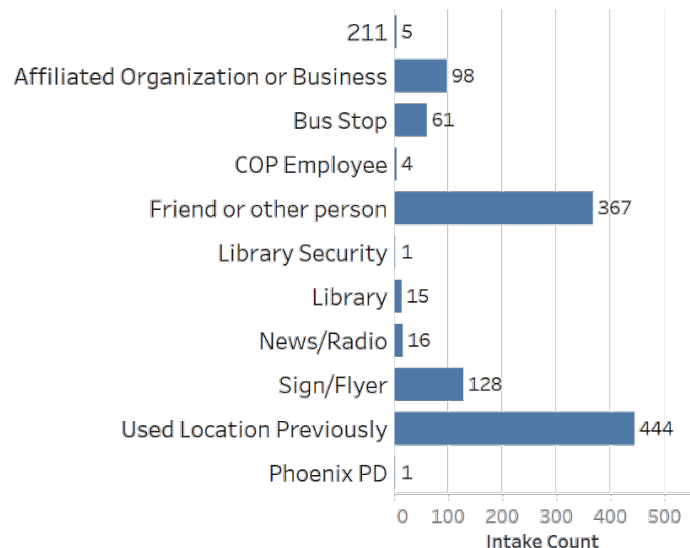
### Referrals

**67 referrals** were processed and received direct onsite assistance from CBI. **2 referral** self-reported that they were in need of additional follow-up from the City of Phoenix and the Office of Emergency Management initiated that referral on their behalf.

### Transportation Method



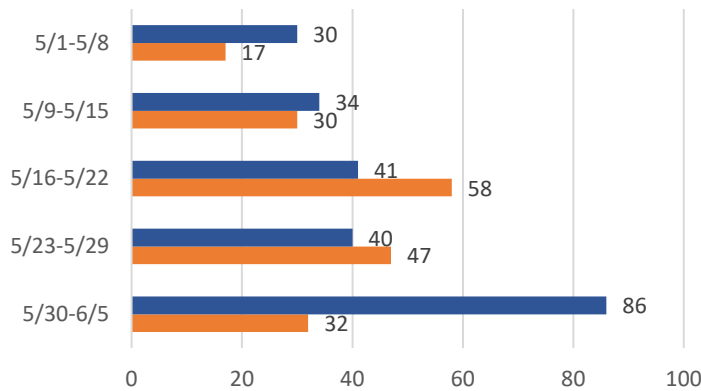
### How did you hear about us?



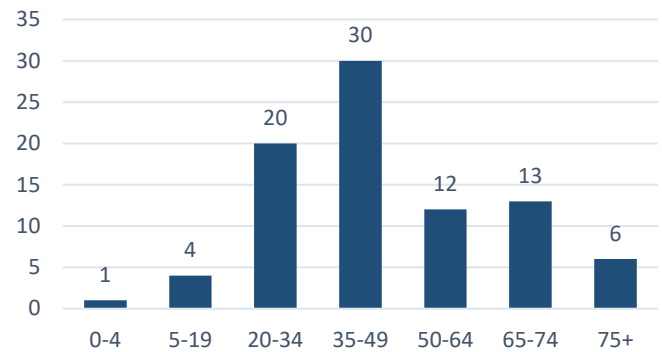
# Summer Safety Weekly Recap: 5/30/24 – 6/5/24

## Heat Related Calls for Service: 5/30/24 - 6/5/24

### Comparative Calls for Service by Week



### Patient Age



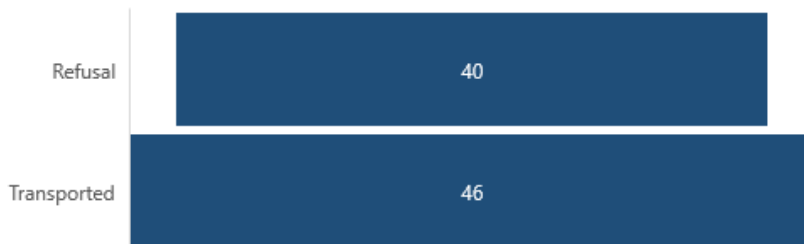
### Primary Symptom

Primary Symptom	Count for Week
Weakness – General	12
Heat/Hyperthermia	11
Altered Level of Consciousness	10
Dehydration	6
Dizziness	3
Cramping	2
Other (only 1 count of complaint)	14

### Patient Location

Street	36
Residence	15
Parking Lot	5
Business	5
Bus Stop	4
Public Park	3
Light Rail Station	3
Factory or Commercial Business	3
Airport	3
Trail	2
CASS	2
Urgent Care	1
Jail	1
Hotel - Motel - Resort	1
Heat Relief Center	1
DPS Office	1

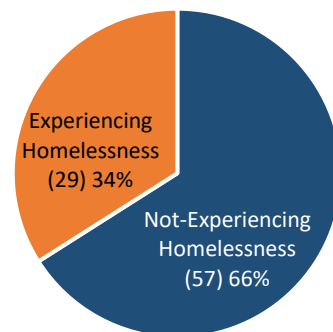
### Patients Transported



#### Top Transport Locations:

- [GSE] BANNER UNIV MED PHX EMER
- [CHEA] VALLEYWISE HEALTH MEDICAL CENTER
- [BP] ABRAZO CENTRAL CAMPUS
- [SJE] ST JOES HOSPITAL ER ADULT
- [JCE] HONOR JCL MED CTR EMERGENCY
- [GBE] HONOR DEER VALLEY EMER

### Heat Related Calls for Service by Living Situation



The Maricopa County Department of Health has reported the following statistics on heat related deaths:

	2024 (4/14-6/1)	2023 (4/23-6/3)
Heat Caused Deaths	1 (1 in Phoenix)	4
Heat Contributed Deaths	3 (2 in Phoenix)	1

(Source <https://www.maricopa.gov/1858/Heat-Surveillance>)

#### Definitions

HEAT CAUSED DEATHS include cases where heat exposure is listed as a direct cause of death.

HEAT CONTRIBUTED DEATHS include cases where heat exposure is listed as a contributing factor.