

Summer Safety Weekly Recap: 10/3/24 – 10/9/24

Respite Center Visitors: 10/3/24 – 10/9/24

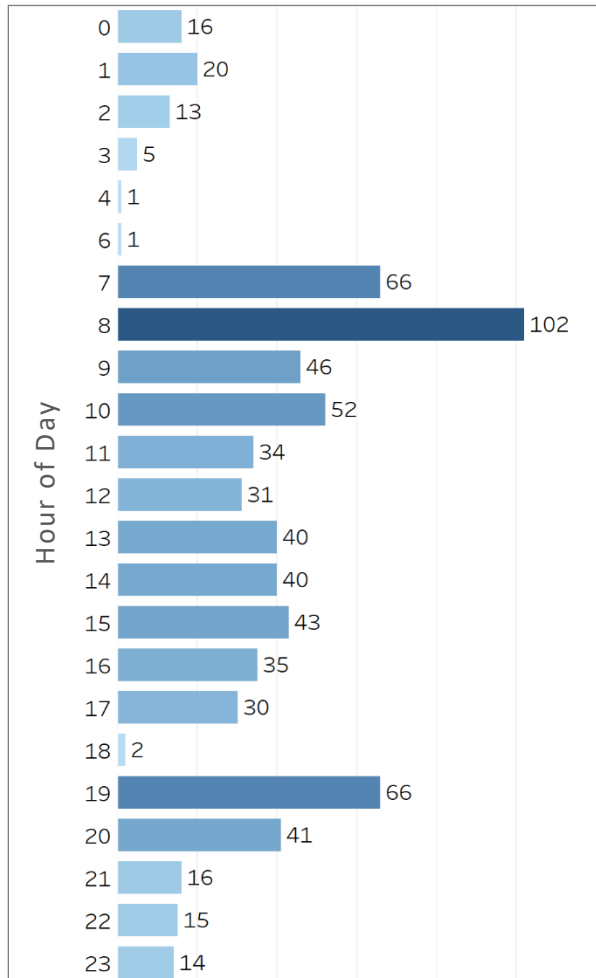
Location Count

Burton Barr Respite is the only location still active. There were **724 visitors** at this location between 10/3 – 10/9.

Phoenix Summer Safety Operation Totals 5/1/24 – 10/9/24:

- **1,416 heat related** calls for service (Source: Phoenix FD). Of those calls, only 213 were within a mile of a cooling or respite center during extended operating hours.
- **35,309 visitors** in respite and extended hour cooling centers (based on intake forms received).
- No further data was collected after 9/30 for any locations other than Burton Barr Respite Center.
- Overall, **6 and 7pm** have seen the highest number of people arriving.
- **Walk/Bike** (76%) has been the most popular method of getting to the cooling center.
- **Returning visitors account for 67%** of intake forms, followed by word of mouth (23%) for how visitors hear about cooling centers.
- **31,624 visitors (92%)** indicated they are experiencing homelessness.
- **32,300 visitors (90%)** indicated they just want to get cool and don't need any additional services or referrals.
- **690 visitors** have utilized the COOLtainer since 8/1, when the visitor numbers started being collected.
- **1,026 visitors** received direct onsite assistance from CBI with various shelter or homeless solutions referrals. **26 visitors** required additional follow up for their referral, which was submitted by the Office of Emergency Management on their behalf.

Intake Time



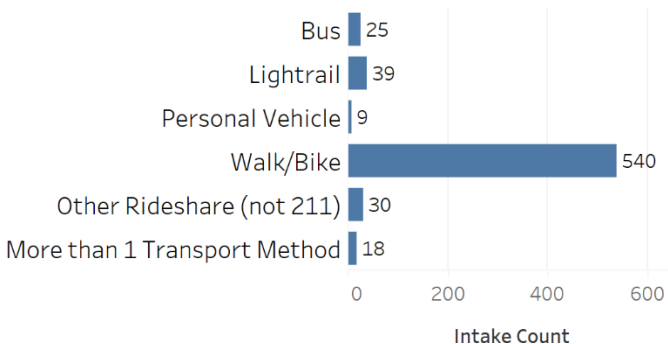
Burton Barr COOLtainer Overflow

An air conditioned Connex box was delivered to Burton Barr to alleviate the overcapacity issues within the respite center. Visitor numbers for the COOLtainer are included in the overall count for the Burton Barr Respite Center. **11 visitors utilized the COOLtainer** between 10/3 – 10/9.

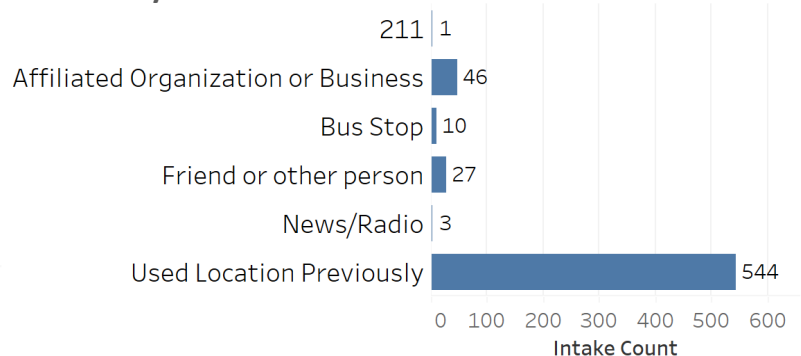
Referrals

50 referrals were processed and received direct onsite assistance from CBI. There was no additional follow-up required from the City of Phoenix or the Office of Emergency Management to submit a referral on their behalf.

Transportation Method



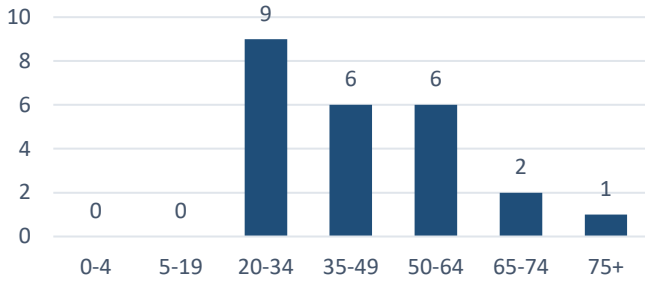
How did you hear about us?



Summer Safety Weekly Recap: 10/3/24 – 10/9/24

Heat Related Calls for Service: 10/3/24 – 10/9/24

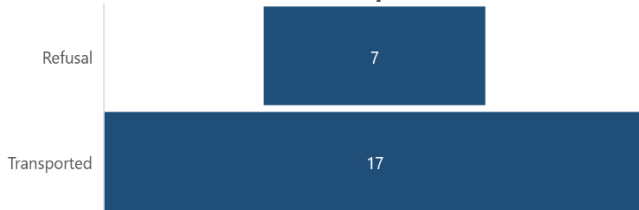
Patient Age



Primary Symptom

Primary Symptom	Count for Week
Dehydration	7
Weakness	6
Heat/Hyperthermia	3
Other (only 1 count of complaint)	8

Patients Transported



Top Transport Locations:

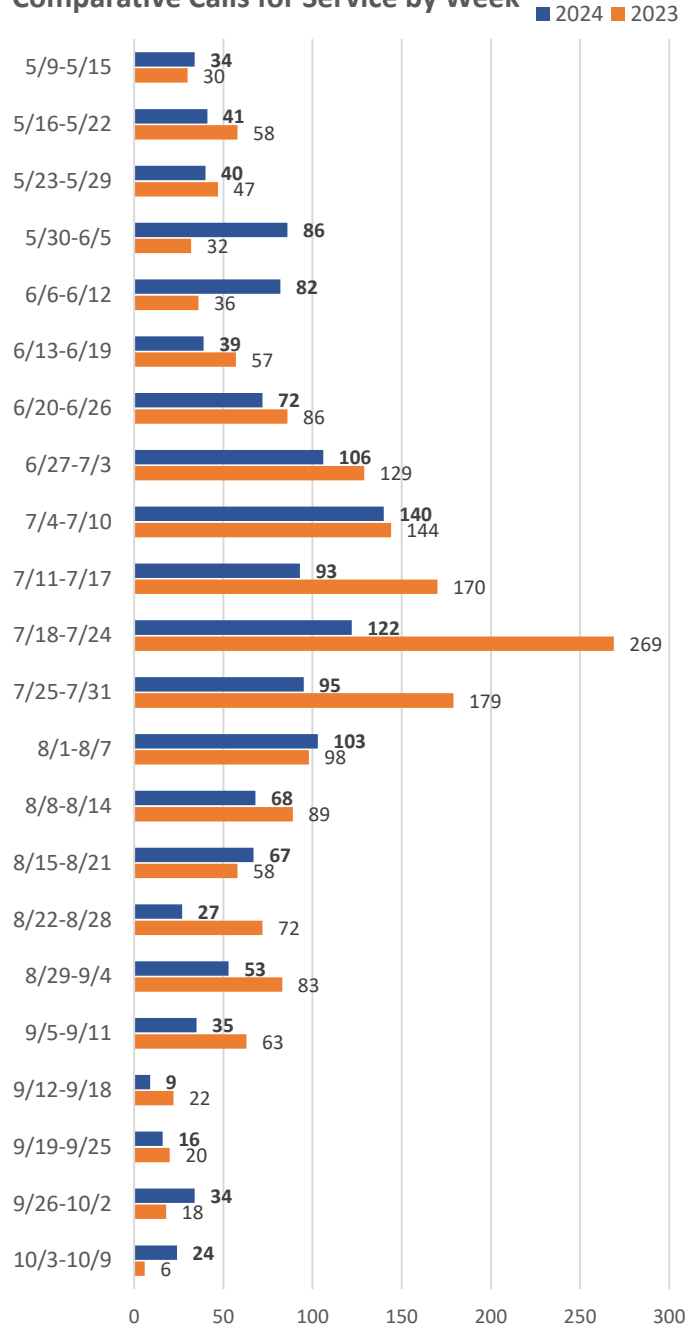
- [GSE] BANNER UNIV MED
- [JCE] HONOR JCL MED CTR
- [GBE] HONOR DEER VALLEY

Patient Location

Street	8
Residence	3
Parking Lot	3
Other	10

46% of patients who suffered from heat related illness were experiencing homelessness.

Comparative Calls for Service by Week



The Maricopa County Department of Health has reported the following statistics on heat related deaths:

	2024 (4/11-10/5)	2023 (4/21-10/5)
Heat Caused Deaths	198 (129 in Phoenix)	389 (Phoenix specific not available)
Heat Contributed Deaths	141 (84 in Phoenix)	283 (Phoenix specific not available)

Note: The Maricopa County Office of the Medical Examiner has 393 potential heat-related death cases under investigation for 2024 and 0 under investigation for 2023.

(Source <https://www.maricopa.gov/1858/Heat-Surveillance>)

Definitions

HEAT CAUSED DEATHS include cases where heat exposure is listed as a direct cause of death.

HEAT CONTRIBUTED DEATHS include cases where heat exposure is listed as a contributing factor.