

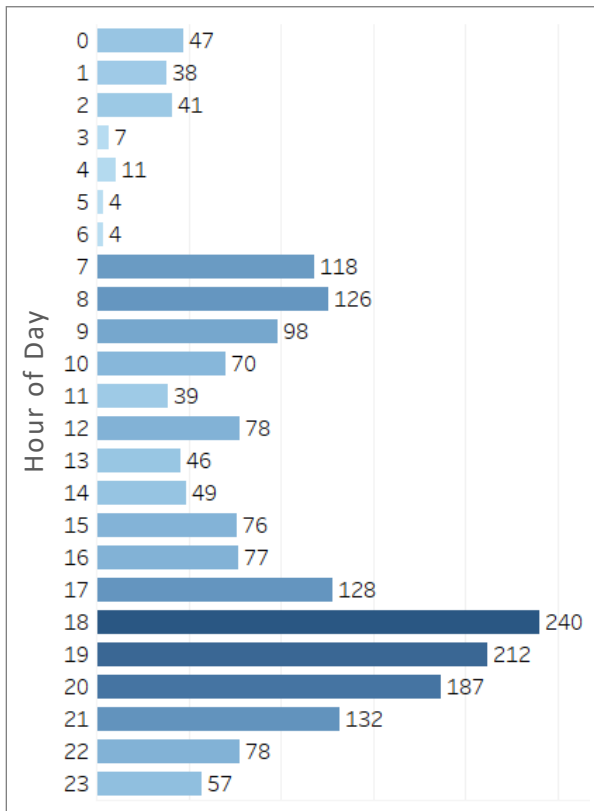
# Summer Safety Weekly Recap: 8/1/24 – 8/7/24

## Respite/Extended Hour Cooling Center Visitors: 8/1/24 – 8/7/24

### Location Count

Burton Barr - Respite	1,092
Senior Opportunities West - Respite	471
Cholla Library - Cooling Center	205
Harmon Library - Cooling Center	130
Yucca Library - Cooling Center	65
<b>Grand Total</b>	<b>1,963</b>

### Intake Time



### Phoenix Summer Safety Operation Totals 5/1/24 – 8/7/24:

- **1,083 heat related** calls for service (Source: Phoenix FD). Of those calls, only 142 were within a mile of a cooling or respite center during extended operating hours.
- **20,322 visits** in respite and extended hour cooling centers (based on intake forms received).
- Overall, **6 and 7pm** have seen the highest number of people arriving.
- **Walk/Bike (75%)** has been the most popular method of getting to the cooling center.
- **Returning visitors account for 57%** of intake forms, followed by word of mouth (31%) for how visitors hear about cooling centers.
- **17,836 visitors (88%)** indicated they are experiencing homelessness.
- **17,827 visitors (88%)** indicated they just want to get cool and don't need any additional services or referrals.
- **676 visitors** received direct onsite assistance from CBI with various shelter or homeless solutions referrals. **25 visitors** required additional follow up for their referral, which was submitted by the Office of Emergency Management on their behalf.

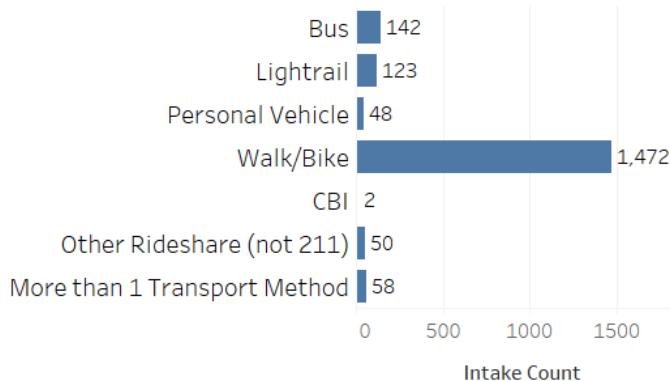
### Burton Barr COOLtainer Overflow

An air conditioned Connex box was delivered to Burton Barr to alleviate the over capacity issues within the respite center. Visitor numbers for the COOLtainer are included in the overall count for the Burton Barr Respite Center. Between 8/1 – 8/7, 216 visitors utilized the Connex box, an average of 31 people per day, primarily during the peak volume hours.

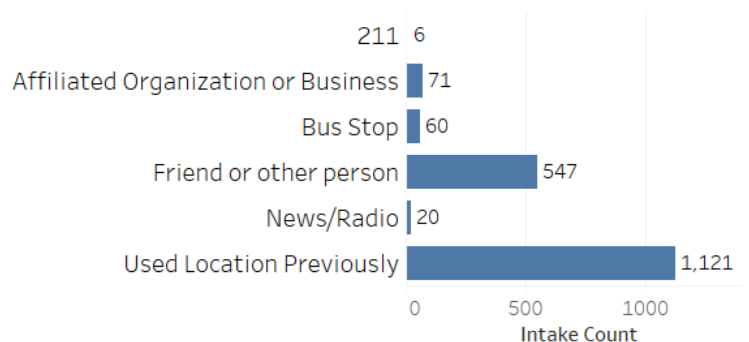
### Referrals

**16 referrals** were processed and received direct onsite assistance from CBI. There was no additional follow-up required from the City of Phoenix or the Office of Emergency Management to submit a referral on their behalf.

### Transportation Method



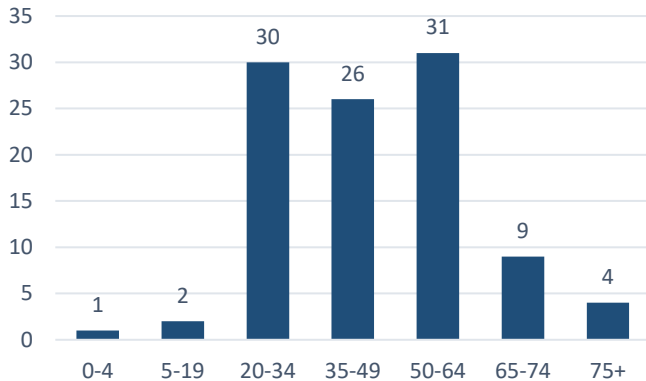
### How did you hear about us?



# Summer Safety Weekly Recap: 8/1/24 – 8/7/24

## Heat Related Calls for Service: 8/1/24 – 8/7/24

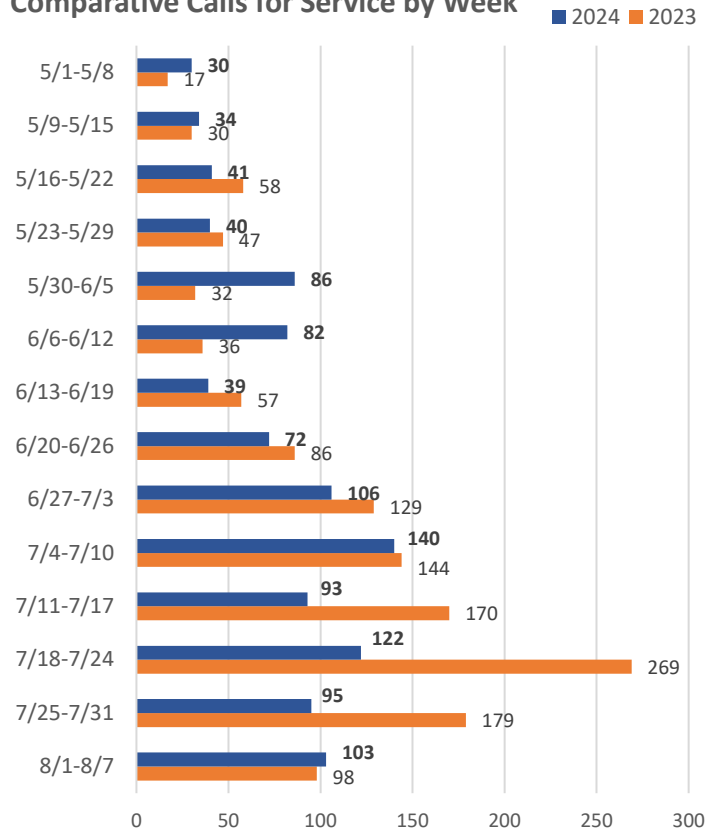
**Patient Age**



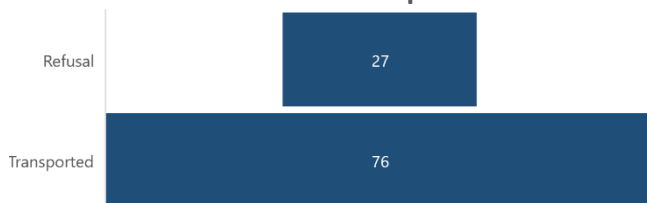
**Primary Symptom**

Primary Symptom	Count for Week
Heat/Hyperthermia	49
Altered Level of Consciousness	13
Dehydrated	12
Cramping	4
Weakness	3
Dizziness	3
Other (only 1 count of complaint)	19

**Comparative Calls for Service by Week**



**Patients Transported**



**Top Transport Locations:**

- [SJE] ST JOES HOSPITAL ER ADULT
- [CHEA] VALLEYWISE HEALT
- [GSE] BANNER UNIVERSITY

**43%** of patients who suffered from heat related illness are experiencing homelessness.

**Patient Location**

Street	38
Residence	16
Parking Lot	7
Factory/Commercial Business	6
Gas Station/Restaurant	5
Bus Stop	5
Public Park/Hiking Trail	4
Other (only 1 count of location)	22

The Maricopa County Department of Health has reported the following statistics on heat related deaths:

	2024 (4/11-7/31)	2023 (4/21-7/31)
Heat Caused Deaths	36 (22 in Phoenix)	293 (Phoenix specific not available)
Heat Contributed Deaths	30 (19 in Phoenix)	211 (Phoenix specific not available)

Note: The Maricopa County Office of the Medical Examiner has 447 potential heat-related death cases under investigation for 2024 and 0 under investigation for 2023.

(Source <https://www.maricopa.gov/1858/Heat-Surveillance>)

**Definitions**

HEAT CAUSED DEATHS include cases where heat exposure is listed as a direct cause of death.

HEAT CONTRIBUTED DEATHS include cases where heat exposure is listed as a contributing factor.

