

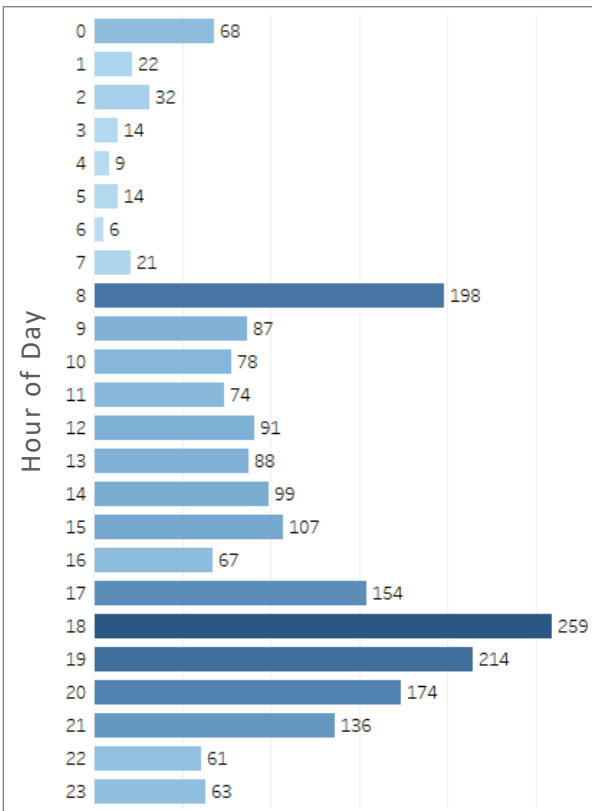
# Summer Safety Weekly Recap: 7/18/24 – 7/24/24

## Respite/Extended Hour Cooling Center Visitors: 7/18/24 – 7/24/24

### Location Count

Burton Barr - Respite	1,212
Senior Opportunities West - Respite	518
Cholla Library - Cooling Center	177
Harmon Library - Cooling Center	152
Yucca Library - Cooling Center	77
Grand Total	2,136

### Intake Time



### Phoenix Summer Safety Operation Totals 5/1/24 – 7/24/24:

- **885 heat related** calls for service (Source: Phoenix FD). Of those calls, only 106 were within a mile of a cooling or respite center during extended operating hours.
- **16,391 visits** in respite and extended hour cooling centers (based on intake forms received).
- Overall, **6 and 7pm** have seen the highest number of people arriving.
- **Walk/Bike** (74%) has been the most popular method of getting to the cooling center.
- **Returning visitors account for 56%** of intake forms, followed by word of mouth (31%) for how visitors hear about cooling centers.
- **14,313 visitors (87%)** indicated they are experiencing homelessness.
- **14,264 visitors (87%)** indicated they just want to get cool and don't need any additional services or referrals.
- **637 visitors** received direct onsite assistance from CBI with various shelter or homeless solutions referrals. **25 visitors** required additional follow up for their referral, which was submitted by the Office of Emergency Management on their behalf.

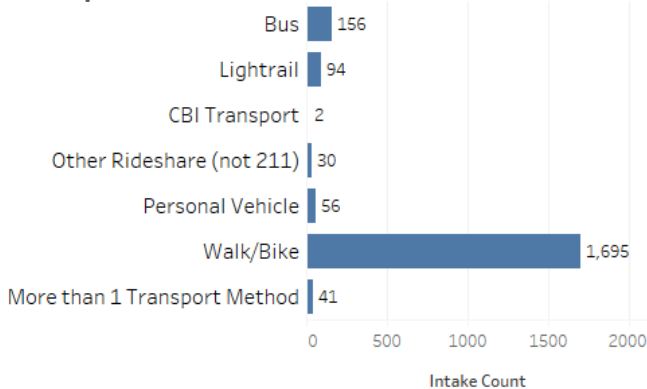
### ASU Medical Students

On Wednesdays, ASU medical students are on site at Burton Barr to assist citizens with basic medical needs. On July 24<sup>th</sup>, they assisted visitors with blood glucose checks, blood pressure checks, wound care, distributed cooling towels and some basic care necessities. Students also packed Naloxone kits and discussed healthy sleep habits in the children's

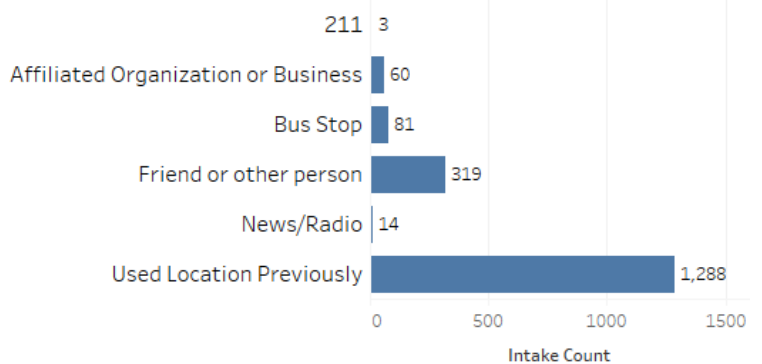
### Referrals

**18 referrals** were processed and received direct onsite assistance from CBI. There was no additional follow-up required from the City of Phoenix or the Office of Emergency Management to submit a referral on their behalf.

### Transportation Method



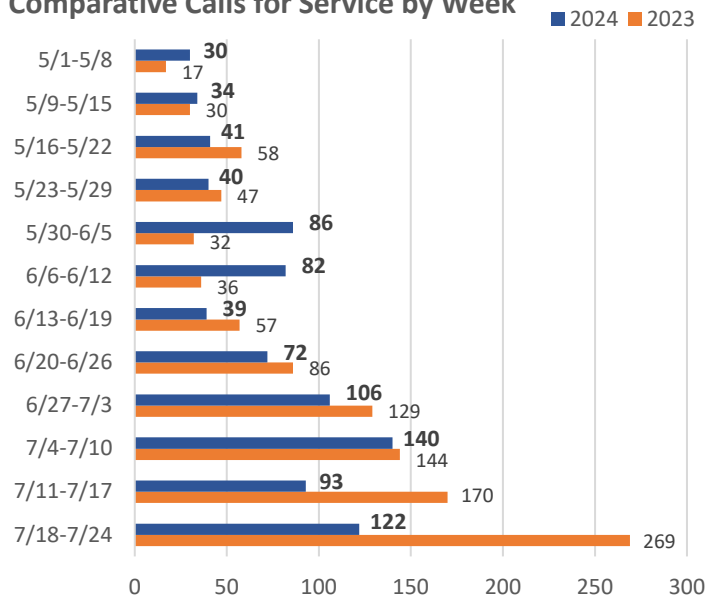
### How did you hear about us?



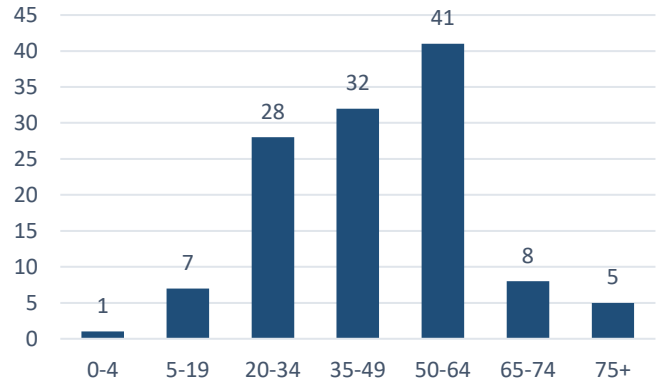
# Summer Safety Weekly Recap: 7/18/24 – 7/24/24

## Heat Related Calls for Service: 7/18/24 – 7/24/24

### Comparative Calls for Service by Week



### Patient Age



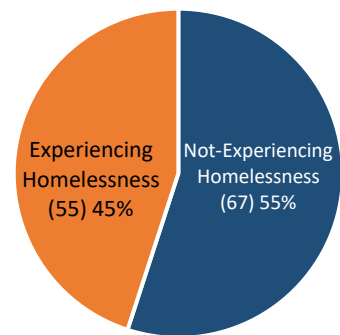
### Patient Location

Street	41
Residence	26
Parking Lot	13
Bus Stop	8
Factory/Commercial Business	7
Gas Station/Restaurant	5
Public Park/Hiking Trail	5
Other (only 1 count of location)	17

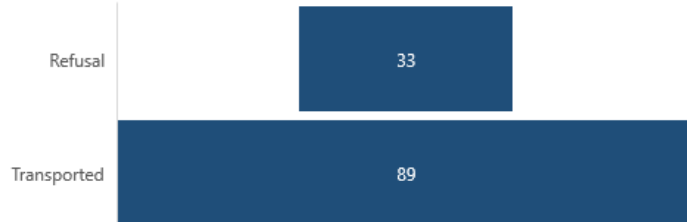
### Primary Symptom

Primary Symptom	Count for Week
Heat/Hyperthermia	65
Altered Mental Status	11
Dehydration	11
Weakness	7
Cramping	4
Other (only 1 count of complaint)	24

### Heat Related Calls for Service by Living Situation



### Patients Transported



#### Top Transport Locations:

- [GSE] BANNER UNIV MED PHX EMER
- [SJE] ST JOES HOSPITAL ER ADULT
- [BP] ABRAZO CENTRAL CAMPUS
- [JCE] HONOR JCL MED CTR EMERGENCY

The Maricopa County Department of Health has reported the following statistics on heat related deaths:

	2024 (4/14-7/20)	2023 (4/23-7/20)
Heat Caused Deaths	19 (8 in Phoenix)	150 (Phoenix specific not available)
Heat Contributed Deaths	8 (5 in Phoenix)	117 (Phoenix specific not available)

Note: The Maricopa County Office of the Medical Examiner has 396 potential heat-related death cases under investigation for 2024 and 0 under investigation for 2023.

(Source <https://www.maricopa.gov/1858/Heat-Surveillance>)

#### Definitions

HEAT CAUSED DEATHS include cases where heat exposure is listed as a direct cause of death.