

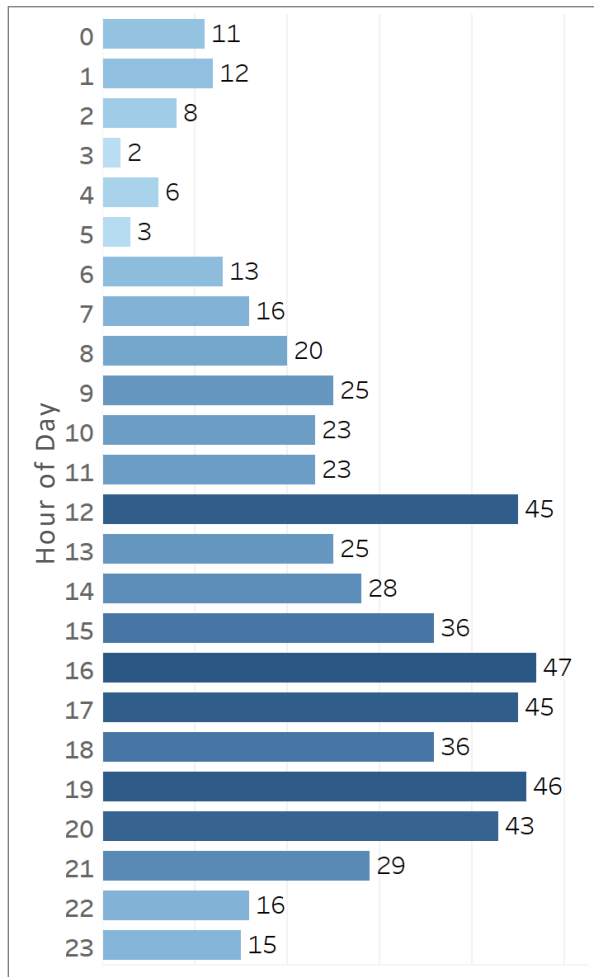
Summer Safety Weekly Recap: 5/1/25 – 5/7/25

Respite/Extended Hour Cooling Center Visitors:

Location Count

20W Jackson Respite Center	200
Cholla Heat Relief	33
Harmon Heat Relief	27
Yucca Heat Relief	5
Grand Total	265

Intake Time



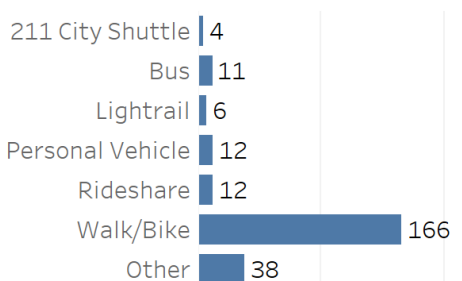
Phoenix Summer Safety Operation Totals 5/1/25 – 5/7/25:

- **13 heat related** calls for service (Source: Phoenix FD).
- **265 visitors** in respite and extended hour cooling centers (based on intake forms received).
- Overall, **noon and between the hours of 4 and 8 pm** have seen the highest number of people arriving.
- **Walk/Bike** (63%) is the most popular method of getting to the cooling center.
- **182 visitors (69%)** indicated they are experiencing homelessness.
- **24 visitors** were assisted with transportation to a shelter, residential/inpatient facility, or Safe Outdoor Space (SOS).
- **64 visitors** received direct onsite assistance from CBI with various shelter or homeless solutions referrals. **18 visitors** required additional follow up for their referral, which was submitted by the Office of Emergency Management on their behalf.

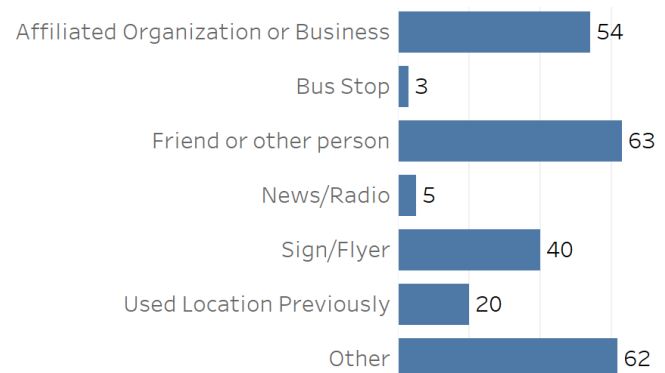
Transportation Assistance Upon Departure from Center

Who provided the transport?	Where was the transport to?	
CBI	NMHC	3
	PNC	7
	Rio Fresco Shelter	1
	Other community shelter	5
	Other Inpatient or Residential facility	1
	Keys to Change Campus	1
	Safe Outdoor Space (SOS)	2
	Washington Street Shelter	2
Other	Diversion Location	1
	Washington Street Shelter	1
Grand Total		24

Transportation Method



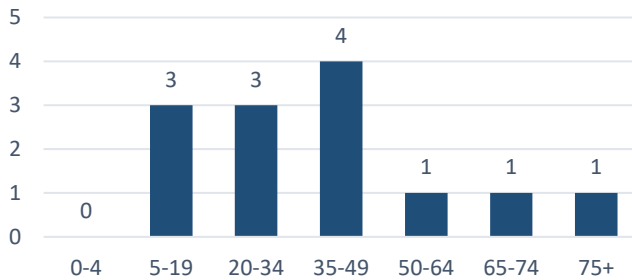
How did you hear about us?



Summer Safety Weekly Recap: 5/1/25 – 5/7/25

Heat Related Calls for Service:

Patient Age



The average high for the first week of the heat relief operation was 85 degrees (compared to 92 degrees the same time last year). Cooler temperatures led to a lower number of heat related medical emergencies.

There were 13 heat related calls for service the first week of the heat relief operation, 5/1-5/17 compared to 30 calls for service last year.

Primary Symptom

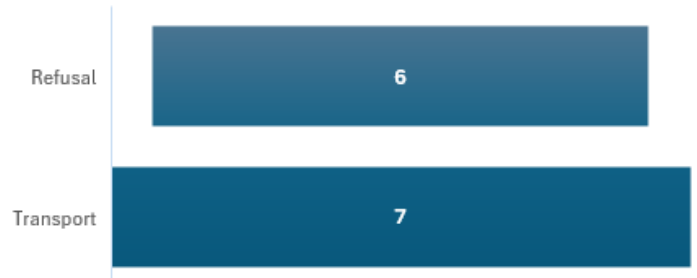
Primary Symptom	Count for Week
Heat/Hyperthermia	3
Alternate Mental State	2
Weakness	2
Other (only 1 count of complaint)	6

Patient Location

Street	4
Bus Stop	2
Apartment	2
Other (only 1 count of location)	5

25% of patients who suffered from heat related illness were experiencing homelessness.

Patients Transported



Transport Locations:

- [BP] ABRAZO CENTRAL CAMPUS
- [TSE] BANNER THUNDERBIRD
- [GSE] BANNER UNIV MED
- [JCE] HONOR JCL MED CTR
- [MS] MARYVALE HOSPITAL
- [MY] MAYO HOSPITAL
- [SJE] ST JOES HOSPITAL ER ADULT

The Maricopa County Department of Health has not yet released their weekly heat related death report, when it becomes available the information will be included here.