

FLOWCHART

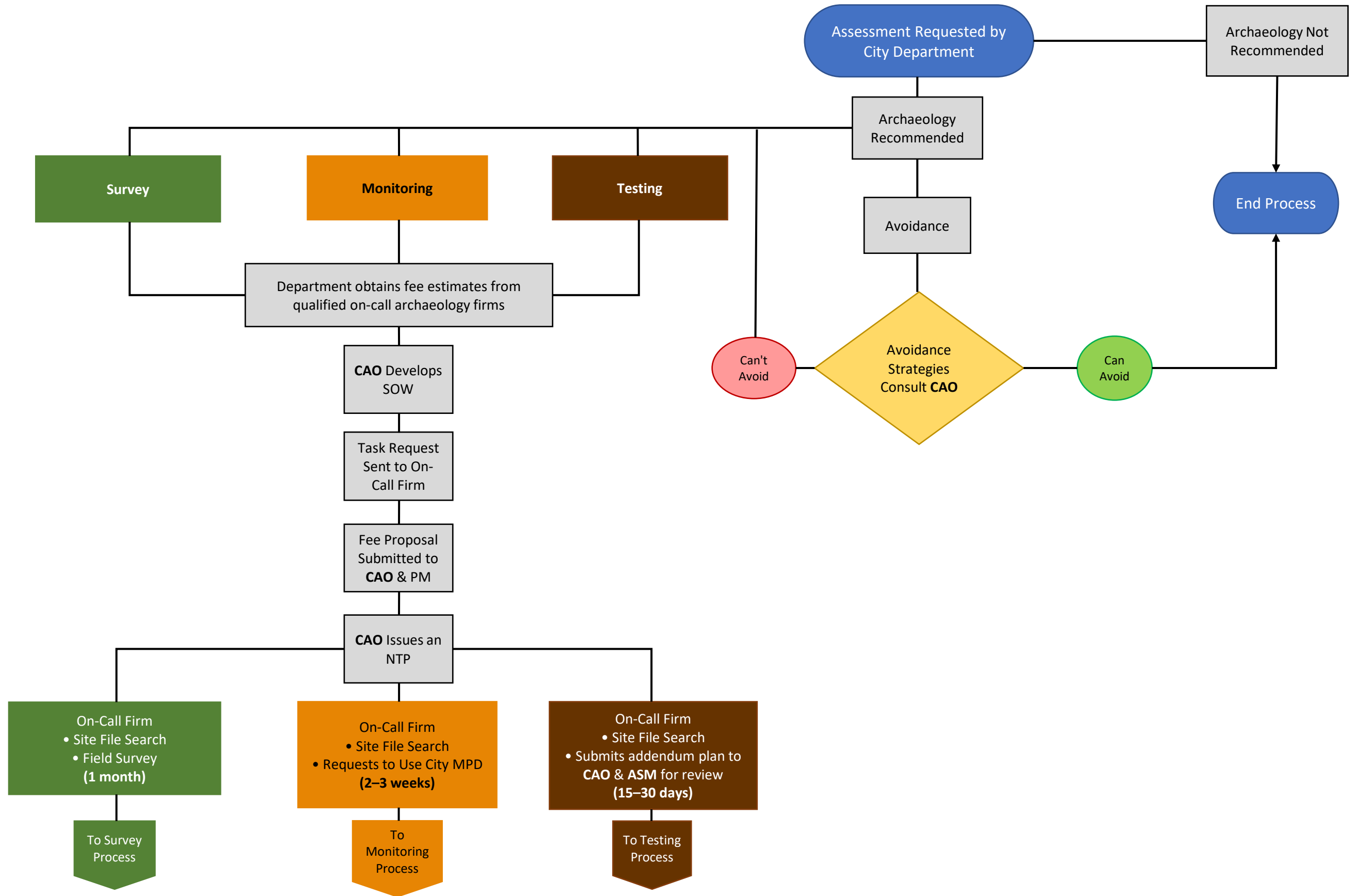
Archaeological Process

For Typical City-sponsored
Projects on City land

Note: There are 4 pages of flow charts for different scenarios/archaeological mitigation measures.

Note: See footnotes on each individual page for general guidance concerning the archaeological process for Federal or Private projects.

Typical Process for a City-Sponsored Project on City Land* †

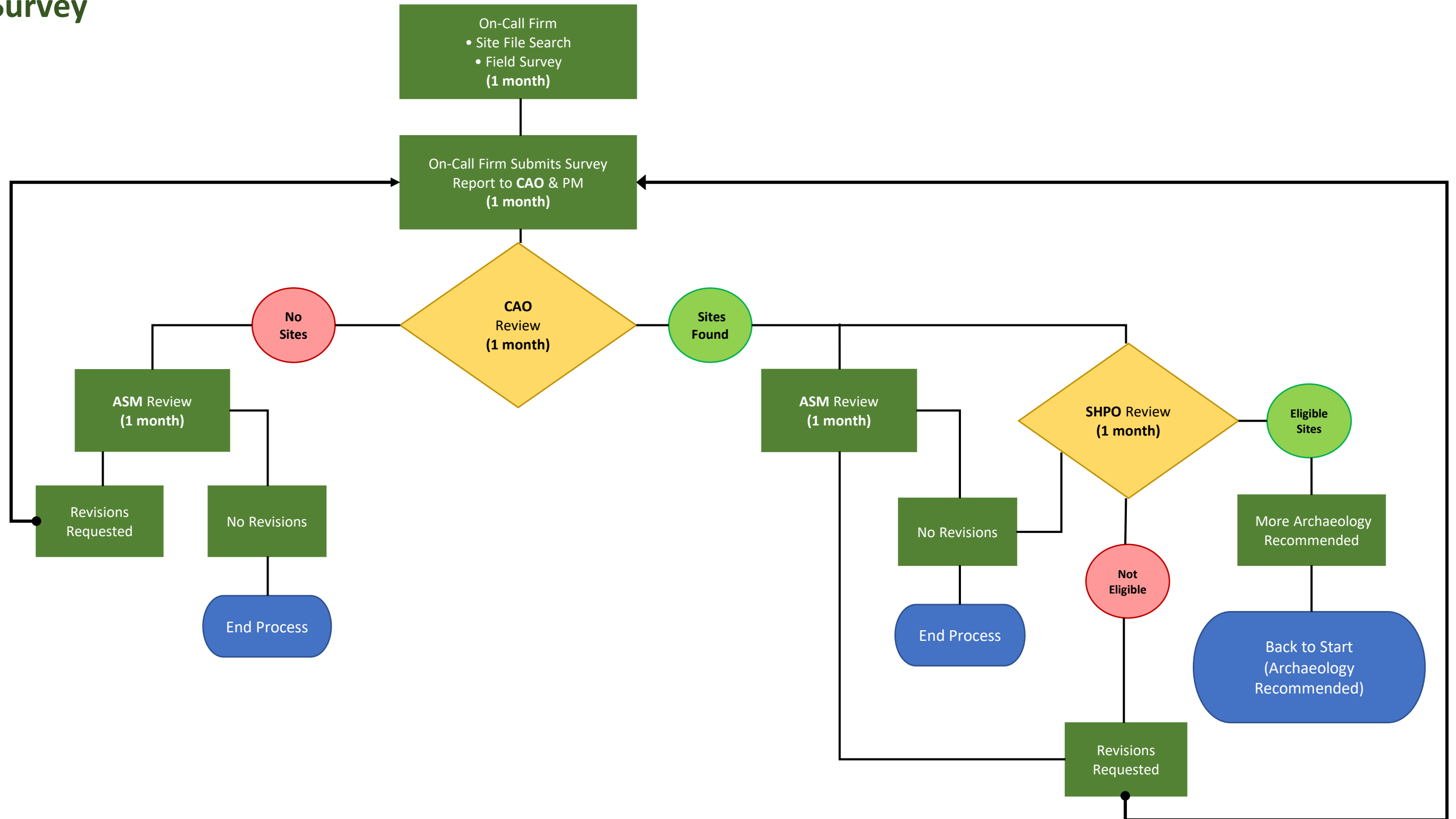


*Where federal funding or other federal approvals are involved, the consultation and review process will involve affiliated Tribes, the SHPO and the lead federal agency.

†For private development projects on private land, ASM would only be involved for burial agreements and SHPO would not be involved.

Typical Process for a City-Sponsored Project on City Land* †

Survey

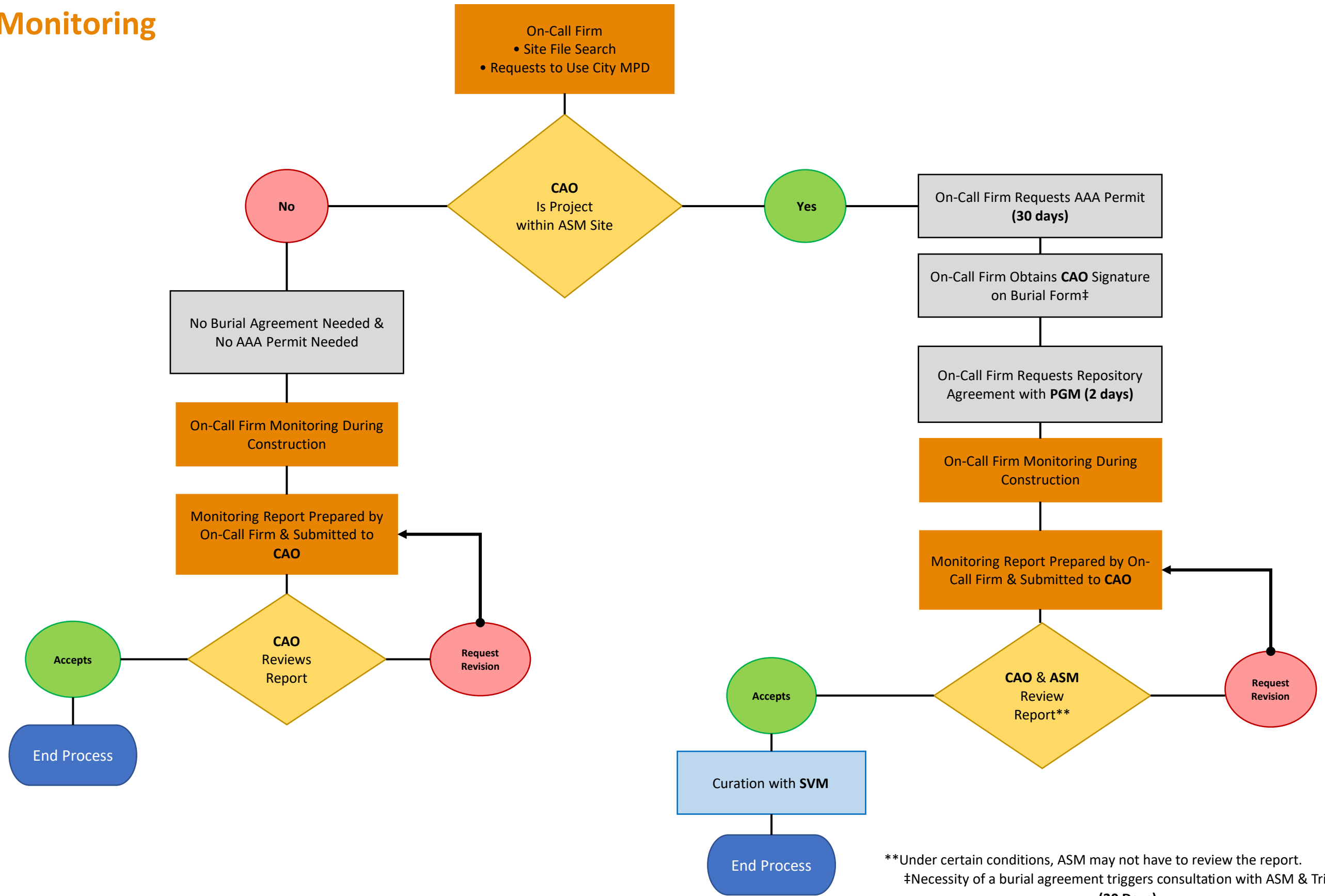


*Where federal funding or other federal approvals are involved, the consultation and review process will involve affiliated Tribes, the SHPO, and the lead federal agency.

†For private projects on private land, ASM would not be involved.

Typical Process for a City-Sponsored Project on City Land*†

Monitoring

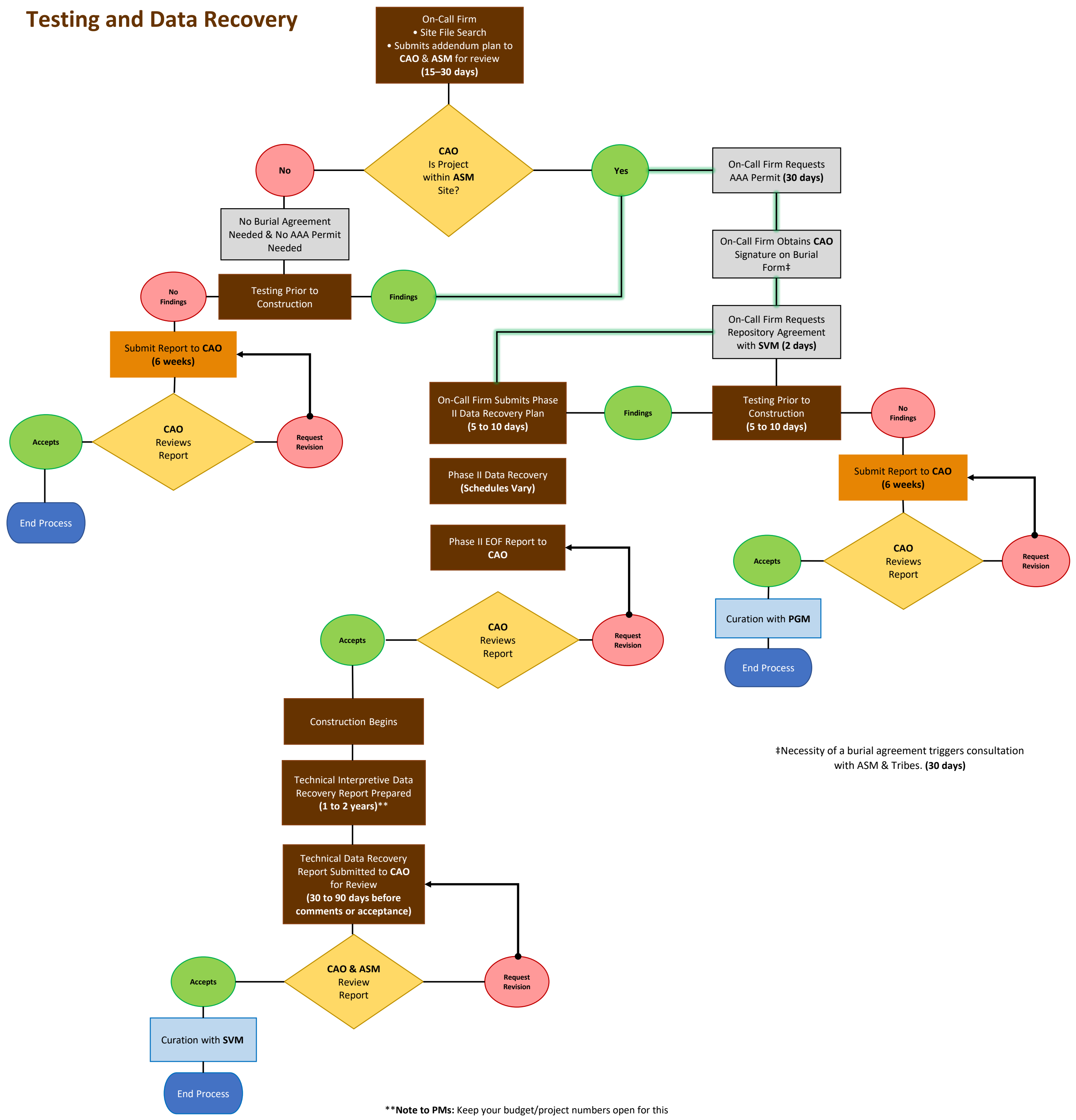


*Where federal funding or other federal approvals are involved, the consultation and review process will involve affiliated Tribes, the SHPO, and the lead federal agency.

†For private development projects on private land, ASM would only be involved for burial agreements and SHPO would not be involved.

Typical Process for a City-Sponsored Project on City Land*

Testing and Data Recovery



‡Necessity of a burial agreement triggers consultation with ASM & Tribes. (30 days)

**Note to PMs: Keep your budget/project numbers open for this

*Where federal funding or other federal approvals are involved, the consultation and review process will involve affiliated Tribes, the SHPO, and the lead federal agency.
 †For private development projects on private land, ASM would only be involved for burial agreements and SHPO would not be involved.